

**MEACRET LINE 200**

A 15, B 125, C 250, D 400, E 600, F 900 nominal width 200

**MATERIAL CHARACTERISTICS**

|   |                          |
|---|--------------------------|
| <b>LOADING CLASS</b>                    | E 600 / F 900            |
| <b>COMPRESSIVE STRENGTH CLASS</b>       | C45/55                   |
| <b>COMPRESSIVE STRENGTH OF CONCRETE</b> | $\geq 55 \text{ N/mm}^2$ |
| <b>WATER ADSORPTION</b>                 | $\leq 6,5\%$             |
| <b>WHEATHER PROOFNESS</b>               | XF4                      |

**PURPOSE OF USE**

Component for the line drainage of surfaces in order to collect, transport and discharge rainwater from adjacent fixed surfaces

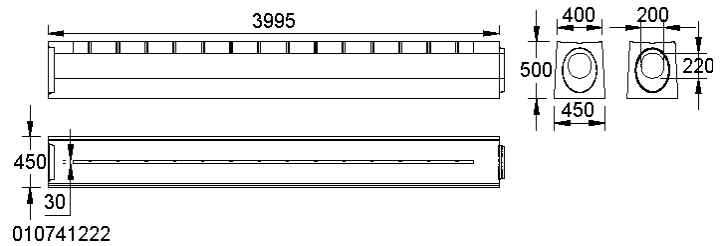
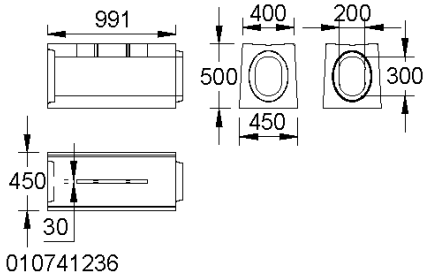
\*\* Not suitable for the diagonal or transverse travel of motorways and highways.

# MEACRET LINE 200

A 15, B 125, C 250, D 400, E 600, F 900      nominal width 200

## MEACRET LINE 200 DRAINAGE CHANNEL WITH CONTINUOUS SLOT AND WITHOUT FALL

Drainage channel for drainage of paved surfaces. Drainage channel with continuous slot (slot width 30 mm) and without fall. Clear width of the channel body 200 mm, total width 450 mm. Special lengths on request. Loading classes A 15 to F 900 according to EN 1433. Load capacity according to MEA installation instructions.



## MEACRET LINE 200 CHANNEL WITH CONTINUOUS SLOT, INTERNAL WIDTH 200 MM, WITHOUT FALL, LOADING CLASS F 900 ACCORDING TO DEN 1433

| Description   | Order-No. | Length [mm] | Width [mm] | Height [mm] | kg/unit |
|---|-----------|-------------|------------|-------------|---------|
| MEACRET LINE 200 channel with continuous slot, without slope, internal height 300 mm, 1 m, F 900 *) | 010741236 | 992         | 450        | 500         | 378,00  |
| MEACRET LINE 200 channel with continuous slot, without slope, internal height 300 mm, 2 m, F 900 *) | 010741234 | 1993        | 450        | 500         | 742,00  |
| MEACRET LINE 200 channel with continuous slot, without slope, internal height 300 mm, 3 m, F 900 *) | 010741232 | 2994        | 450        | 500         | 1100,00 |
| MEACRET LINE 200 channel with continuous slot, without slope, internal height 200 mm, 4 m, F 900 *) | 010741220 | 3995        | 450        | 500         | 1550,00 |
| MEACRET LINE 200 channel with continuous slot, without slope, internal height 220 mm, 4 m, F 900 *) | 010741222 | 3995        | 450        | 500         | 1535,00 |
| MEACRET LINE 200 channel with continuous slot, without slope, internal height 240 mm, 4 m, F 900 *) | 010741224 | 3995        | 450        | 500         | 1520,00 |
| MEACRET LINE 200 channel with continuous slot, without slope, internal height 260 mm, 4 m, F 900 *) | 010741226 | 3995        | 450        | 500         | 1505,00 |
| MEACRET LINE 200 channel with continuous slot, without slope, internal height 280 mm, 4 m, F 900 *) | 010741228 | 3995        | 450        | 500         | 1490,00 |
| MEACRET LINE 200 channel with continuous slot, without slope, internal height 300 mm, 4 m, F 900 *) | 010741230 | 3995        | 450        | 500         | 1470,00 |

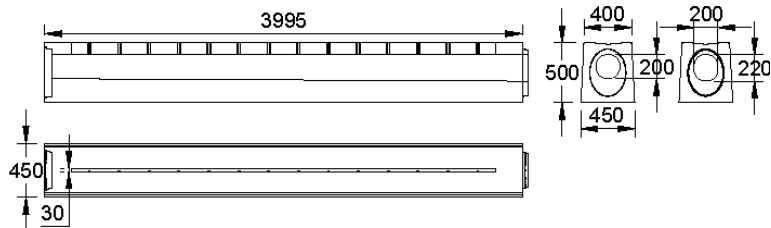
\*) Delivery time on demand.

# MEACRET LINE 200

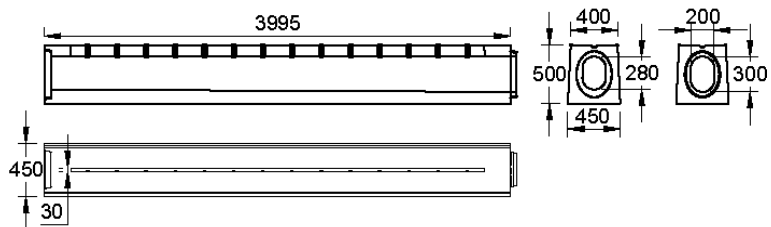
A 15, B 125, C 250, D 400, E 600, F 900      nominal width 200

## MEACRET LINE 200 DRAINAGE CHANNEL WITH CONTINUOUS SLOT AND WITH FALL 0,5%

Drainage channel for drainage of paved surfaces. Drainage channel with continuous slot (slot width 30 mm) and with fall 0,5%. Clear width of the channel body 200 mm, total width 450 mm. Special lengths on request. Loading classes A 15 to F 900 according to EN 1433. Load capacity according to MEA installation instructions.



010741240



010741248

## MEACRET LINE 200 CHANNELS WITH CONTINUOUS SLOT, INTERNAL WIDTH 200 MM, WITH FALL 0,5%, LOADING CLASS F 900 ACCORDING TO EN 1433

| Description   | Order-No. | Length [mm] | Width [mm] | Height [mm] | kg/unit |
|---|-----------|-------------|------------|-------------|---------|
| MEACRET LINE 200 channel with continuous slot, slope 0,5%, internal height 200 to 220 mm, 4 m, F 900 *) | 010741240 | 3995        | 450        | 500         | 1650,00 |
| MEACRET LINE 200 channel with continuous slot, slope 0,5%, internal height 220 to 240 mm, 4 m, F 900 *) | 010741242 | 3995        | 450        | 500         | 1609,00 |
| MEACRET LINE 200 channel with continuous slot, slope 0,5%, internal height 240 to 260 mm, 4 m, F 900*)  | 010741244 | 3995        | 450        | 500         | 1569,00 |
| MEACRET LINE 200 channel with continuous slot, slope 0,5%, internal height 260 to 280 mm, 4 m, F 900 *) | 010741246 | 3995        | 450        | 500         | 1530,00 |
| MEACRET LINE 200 channel with continuous slot, slope 0,5%, internal height 280 to 300 mm, 4 m, F 900*)  | 010741248 | 3995        | 450        | 500         | 1492,00 |

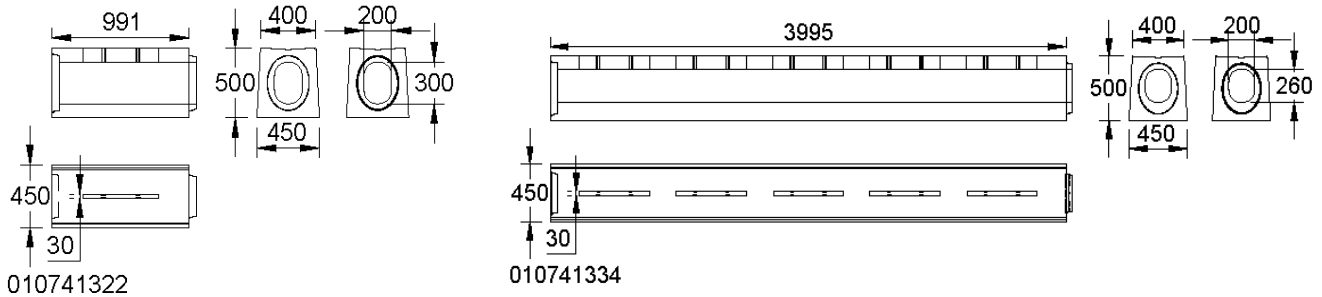
\*) Delivery time on demand.

# MEACRET LINE 200

A 15, B 125, C 250, D 400, E 600, F 900 nominal width 200

## MEACRET LINE 200 DRAINAGE CHANNEL WITH INTERRUPTED SLOT AND WITHOUT FALL

Drainage channel for drainage of paved surfaces. Drainage channel with interrupted slot (slot width 30 mm) and without fall. Clear width of the channel body 200 mm, total width 450 mm. Special lengths on request. Loading classes A 15 to E 600 according to EN 1433. Load capacity according to MEA installation instructions.



## MEACRET LINE 200 CHANNELS WITH INTERRUPTED SLOT, INTERNAL WIDTH 200 MM, WITHOUT FALL, LOADING CLASS E 600 ACCORDING TO EN 1433

| Description  | Order-No. | Length [mm] | Width [mm] | Height [mm] | kg/unit |
|--|-----------|-------------|------------|-------------|---------|
| MEACRET LINE 200 channel with interrupted slot, without slope, internal height 300 mm, 1 m, E 600 *) | 010741322 | 992         | 450        | 500         | 378,00  |
| MEACRET LINE 200 channel with interrupted slot, without slope, internal height 300 mm, 2 m, E 600 *) | 010741324 | 1993        | 450        | 500         | 749,00  |
| MEACRET LINE 200 channel with interrupted slot, without slope, internal height 300 mm, 3 m, E 600 *) | 010741326 | 2994        | 450        | 500         | 749,00  |
| MEACRET LINE 200 channel with interrupted slot, without slope, internal height 200 mm, 4 m, E 600 *) | 010741328 | 3995        | 450        | 500         | 1552,00 |
| MEACRET LINE 200 channel with interrupted slot, without slope, internal height 220 mm, 4 m, E 600 *) | 010741330 | 3995        | 450        | 500         | 1537,00 |
| MEACRET LINE 200 channel with interrupted slot, without slope, internal height 240 mm, 4 m, E 600 *) | 010741332 | 3995        | 450        | 500         | 1522,00 |
| MEACRET LINE 200 channel with interrupted slot, without slope, internal height 260 mm, 4 m, E 600 *) | 010741334 | 3995        | 450        | 500         | 1507,00 |
| MEACRET LINE 200 channel with interrupted slot, without slope, internal height 280 mm, 4 m, E 600 *) | 010741336 | 3995        | 450        | 500         | 1492,00 |
| MEACRET LINE 200 channel with interrupted slot, without slope, internal height 300 mm, 4 m, E 600 *) | 010741338 | 3995        | 450        | 500         | 1500,00 |

\*) Delivery time on demand.

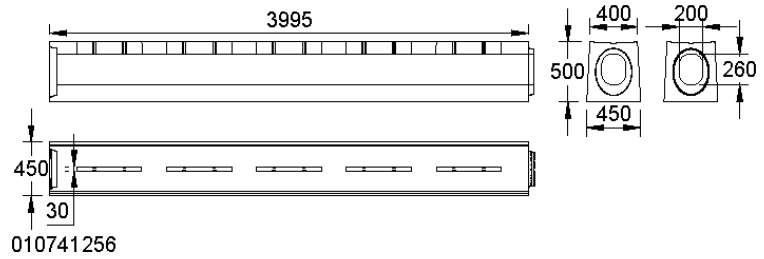
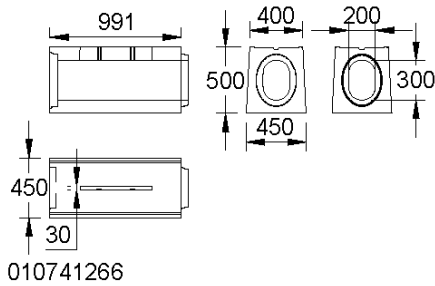
# MEACRET LINE 200

A 15, B 125, C 250, D 400, E 600, F 900

nominal width 200



BUILDING SUCCESS



## MEACRET LINE 200 CHANNELS WITH INTERRUPTED SLOT, INTERNAL WIDTH 200 MM, WITHOUT FALL, LOADING CLASS E 600 ACCORDING TO EN 1433

| Description  | Order-No. | Length [mm] | Width [mm] | Height [mm] | kg/unit |
|--|-----------|-------------|------------|-------------|---------|
| MEACRET LINE 200 channel with interrupted slot, without slope, internal height 300 mm, 1 m, F 900 *) | 010741266 | 992         | 450        | 500         | 378,00  |
| MEACRET LINE 200 channel with interrupted slot, without slope, internal height 300 mm, 2 m, F 900 *) | 010741264 | 1993        | 450        | 500         | 749,00  |
| MEACRET LINE 200 channel with interrupted slot, without slope, internal height 300 mm, 3 m, F 900 *) | 010741262 | 2994        | 450        | 500         | 1115,00 |
| MEACRET LINE 200 channel with interrupted slot, without slope, internal height 200 mm, 4 m, F 900 *) | 010741250 | 3995        | 450        | 500         | 1552,00 |
| MEACRET LINE 200 channel with interrupted slot, without slope, internal height 220 mm, 4 m, F 900 *) | 010741252 | 3995        | 450        | 500         | 1537,00 |
| MEACRET LINE 200 channel with interrupted slot, without slope, internal height 240 mm, 4 m, F 900 *) | 010741254 | 3995        | 450        | 500         | 1522,00 |
| MEACRET LINE 200 channel with interrupted slot, without slope, internal height 260 mm, 4 m, F 900 *) | 010741256 | 3995        | 450        | 500         | 1507,00 |
| MEACRET LINE 200 channel with interrupted slot, without slope, internal height 280 mm, 4 m, F 900 *) | 010741258 | 3995        | 450        | 500         | 1492,00 |
| MEACRET LINE 200 channel with interrupted slot, without slope, internal height 300 mm, 4 m, F 900 *) | 010741260 | 3995        | 450        | 500         | 1500,00 |

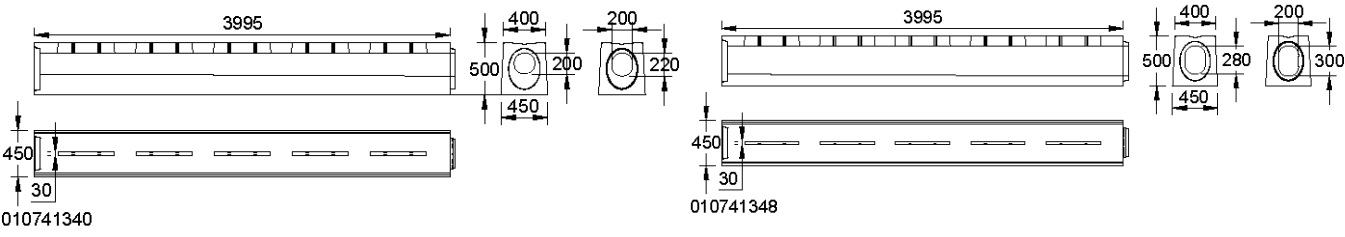
\*) Delivery time on demand.

# MEACRET LINE 200

A 15, B 125, C 250, D 400, E 600, F 900 nominal width 200

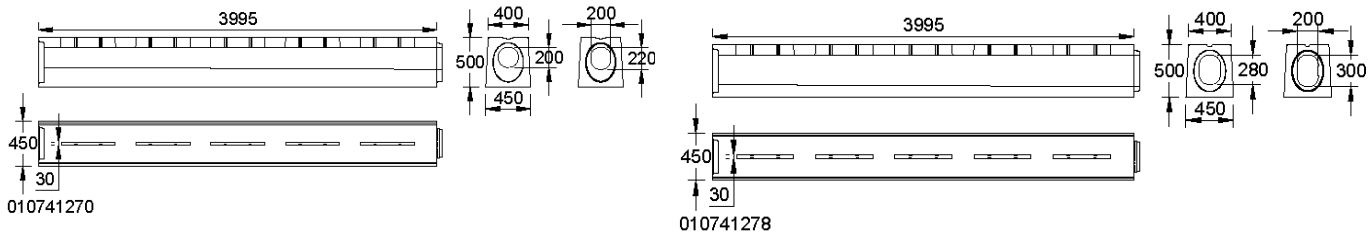
## MEACRET LINE 200 DRAINAGE CHANNEL WITH INTERRUPTED SLOT AND WITH FALL 0,5%

Drainage channel for drainage of paved surfaces. Drainage channel with interrupted slot (slot width 30 mm) and with fall 0,5%. Clear width of the channel body 200 mm, total width 450 mm. Special lengths on request. Loading classes A 15 to E 600 according to EN 1433. Load capacity according to MEA installation instructions.



## MEACRET LINE 200 CHANNELS WITH INTERRUPTED SLOT, INTERNAL WIDTH 200 MM, WITH FALL 0,5%, LOADING CLASS E 600 ACCORDING TO EN 1433

| Description  | Order-No. | Length [mm] | Width [mm] | Height [mm] | kg/unit |
|--|-----------|-------------|------------|-------------|---------|
| MEACRET LINE 200 channel with interrupted slot, slope 0,5%, internal height 200 to 220 mm, 4 m, E 600 *) | 010741340 | 3995        | 450        | 500         | 1678,00 |
| MEACRET LINE 200 channel with interrupted slot, slope 0,5%, internal height 220 to 240 mm, 4 m, E 600 *) | 010741342 | 3995        | 450        | 500         | 1638,00 |
| MEACRET LINE 200 channel with interrupted slot, slope 0,5%, internal height 240 to 260 mm, 4 m, E 600 *) | 010741344 | 3995        | 450        | 500         | 1598,00 |
| MEACRET LINE 200 channel with interrupted slot, slope 0,5%, internal height 260 to 280 mm, 4 m, E 600 *) | 010741346 | 3995        | 450        | 500         | 1559,00 |
| MEACRET LINE 200 channel with interrupted slot, slope 0,5%, internal height 280 to 300 mm, 4 m, E 600 *) | 010741348 | 3995        | 450        | 500         | 1521,00 |



## MEACRET LINE 200 CHANNELS WITH INTERRUPTED SLOT, INTERNAL WIDTH 200 MM, WITH FALL 0,5%, LOADING CLASS F 900 ACCORDING TO EN 1433

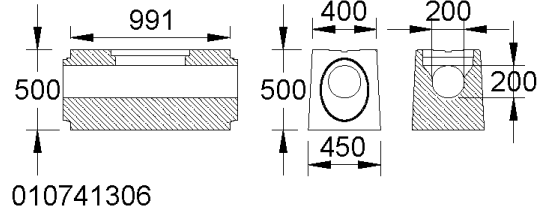
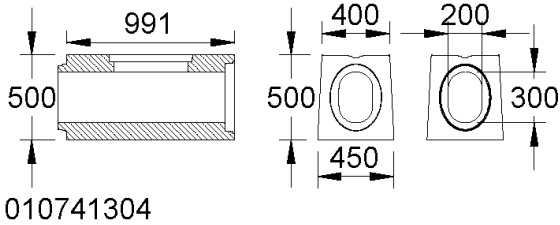
| Description  | Order-No. | Length [mm] | Width [mm] | Height [mm] | kg/unit |
|--|-----------|-------------|------------|-------------|---------|
| MEACRET LINE 200 channel with interrupted slot, slope 0,5%, internal height 200 to 220 mm, 4 m, F 900 *) | 010741270 | 3995        | 450        | 500         | 1678,00 |
| MEACRET LINE 200 channel with interrupted slot, slope 0,5%, internal height 220 to 240 mm, 4 m, F 900 *) | 010741272 | 3995        | 450        | 500         | 1638,00 |
| MEACRET LINE 200 channel with interrupted slot, slope 0,5%, internal height 240 to 260 mm, 4 m, F 900 *) | 010741274 | 3995        | 450        | 500         | 1598,00 |
| MEACRET LINE 200 channel with interrupted slot, slope 0,5%, internal height 260 to 280 mm, 4 m, F 900 *) | 010741276 | 3995        | 450        | 500         | 1559,00 |
| MEACRET LINE 200 channel with interrupted slot, slope 0,5%, internal height 280 to 300 mm, 4 m, F 900 *) | 010741278 | 3995        | 450        | 500         | 1521,00 |

\*) Delivery time on demand.

# MEACRET LINE 200

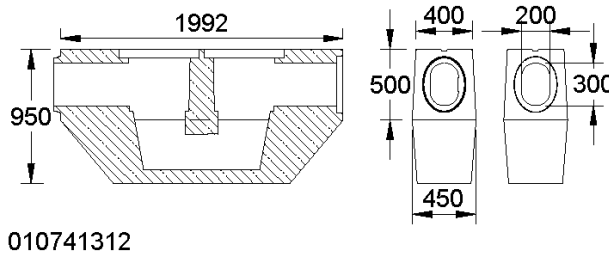
A 15, B 125, C 250, D 400, E 600, F 900      nominal width 200

## MEACRET LINE 200 ACCESSORIES



## MEACRET LINE 200 REVISION ELEMENT INCL. DUCTILE IRON-SLOTTED GRATING, INTERNAL WIDTH 200 MM, LOADING CLASS E 600/F 900 ACCORDING TO EN 1433

| Description   | Order-No. | Length [mm] | Width [mm] | Height [mm] | kg/unit |
|---|-----------|-------------|------------|-------------|---------|
| MEACRET LINE 200 cleaning unit basic, internal height 300 mm, Tongue-Groove connection, including ductile iron grate, E 600/F 900 *)  | 010741304 | 991         | 450        | 500         | 337,00  |
| MEACRET LINE 200 cleaning unit centre, internal height 200 mm, Tongue-Tongue connection, including ductile iron grate, E 600/F 900 *) | 010741306 | 991         | 450        | 500         | 410,00  |



## MEACRET LINE 200 DWS DIVING-WALL-SHAFTS, WITH DUCTILE IRON COVER, INTERNAL WIDTH 200 MM, LOADING CLASS F 900 ACCORDING TO EN 1433

| Description   | Order-No. | Length [mm] | Width [mm] | Height [mm] | kg/unit |
|---|-----------|-------------|------------|-------------|---------|
| MEACRET LINE 200 DWS diving-wall-shaft, internal height 300 mm, self-extinguishing, 2 m, F 900 *) | 010741312 | 1992        | 450        | 500         | 1020,00 |

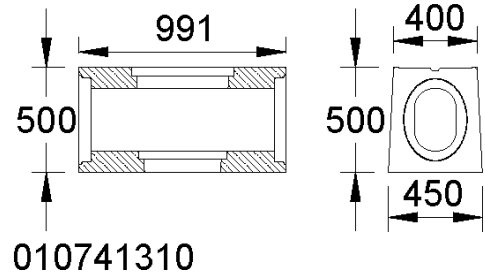
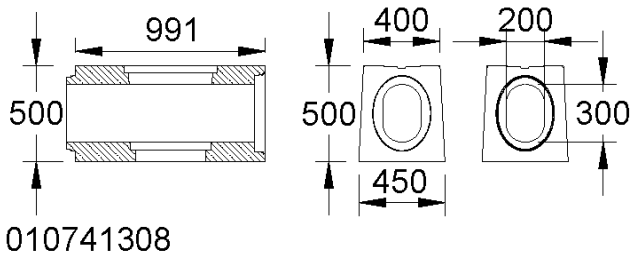
\*) Delivery time on demand.

# MEACRET LINE 200

A 15, B 125, C 250, D 400, E 600, F 900      nominal width 200

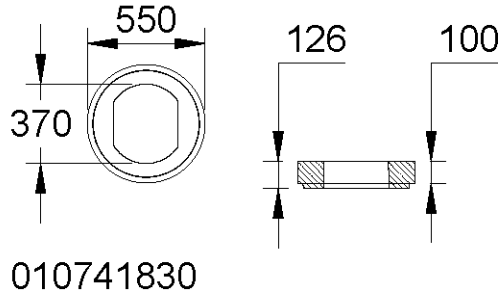


BUILDING SUCCESS



**MEACRET LINE 200 GULLY UPPER PARTS INCL. DUCTILE IRON-SLOTTED GRATING, INTERNAL WIDTH 200 MM, LOADING CLASS E 600/F 900 ACCORDING TO EN 1433**

| Description   | Order-No. | Length [mm] | Width [mm] | Height [mm] | kg/unit |
|---|-----------|-------------|------------|-------------|---------|
| MEACRET LINE 200 Gully Upper-part, internal height 300 mm, Tongue-Groove connection, including basket small and ductile iron grate E 600/F 900 *) | 010741308 | 991         | 450        | 500         | 265,00  |
| MEACRET LINE 200 Gully Upper-part, internal height 300 mm, Groove-Groove connection, including basket small and ductile iron grate E 600/F 900 *) | 010741310 | 991         | 450        | 500         | 265,00  |



**MEACRET LINE 200 ADAPTER FOR GULLY UPPER PARTS TO GULLY INTERMEDIATE AND LOWER PARTS**

| Description   | Order-No. | Length [mm] | Width [mm] | Height [mm] | kg/unit |
|---|-----------|-------------|------------|-------------|---------|
| MEACRET LINE 200 adapter plate gully upper part for gully intermediate part / gully lower part *) | 010741830 | 600         | 600        | 100         | 53,00   |

\*) Delivery time on demand.



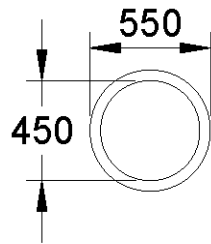
# MEACRET LINE 200

A 15, B 125, C 250, D 400, E 600, F 900

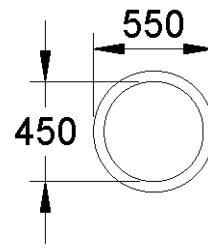
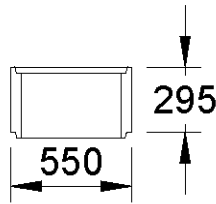
nominal width 200



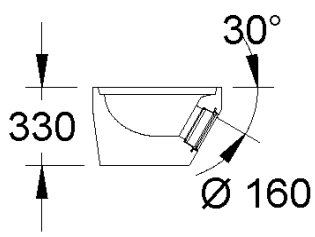
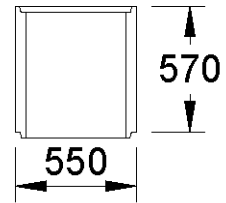
BUILDING SUCCESS



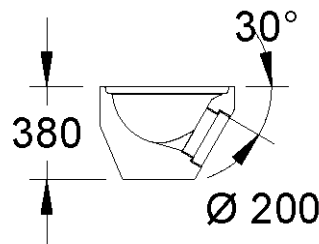
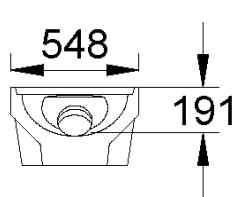
010741832



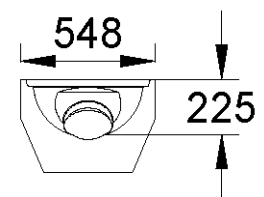
010741834



010741836



010741838



## MEACRET LINE 200 GULLY INTERMEDIATE AND LOWER PARTS

| Description   | Order-No. | Length [mm] | Width [mm] | Height [mm] | kg/unit |
|---|-----------|-------------|------------|-------------|---------|
| MEACRET LINE 200 gully intermediate part, short, Ø 500 mm, height 290 mm *) | 010741832 | 600         | 600        | 290         | 60,00   |
| MEACRET LINE 200 gully intermediate part, long, Ø 500 mm, height 590 mm *)  | 010741834 | 600         | 600        | 590         | 120,00  |
| MEACRET LINE 200 gully lower part with pipe socket Ø 160 mm *)              | 010741836 | 600         | 600        | 590         | 232,00  |
| MEACRET LINE 200 gully lower part with pipe socket Ø 200 mm *)              | 010741838 | 600         | 600        | 590         | 232,00  |

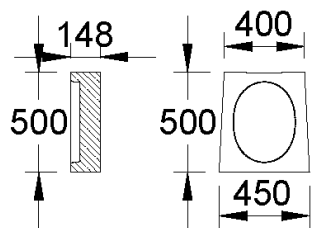
# MEACRET LINE 200

A 15, B 125, C 250, D 400, E 600, F 900

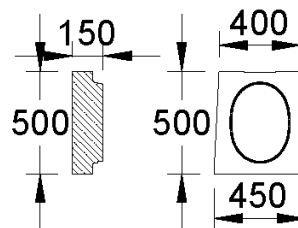
nominal width 200



BUILDING SUCCESS



010741314



010741316

## MEACRET LINE 200 END CAPS

| Description                              | Order-No. | Length [mm] | Width [mm] | Height [mm] | kg/unit |
|--|-----------|-------------|------------|-------------|---------|
| MEACRET LINE 200.G Endcap with groove *) | 010741314 | 150         | 450        | 500         | 66,00   |
| MEACRET LINE 200.T Endcap with tongue *) | 010741316 | 150         | 450        | 500         | 55,00   |

\*) Delivery time on demand.

This edition of the technical data sheet is valid on its own from February 2022, until a revised version is published, and replaces earlier publications. The current version is available for download at [www.mea-group.com](http://www.mea-group.com).

MEA Bautechnik GmbH  
 Business unit MEA Water Management  
 Sudetenstraße 1  
 86551 Aichach  
 Tel.: +49 (0) 82 51. 91 0  
 Fax: +49 (0) 82 51. 91 13 06  
 E-Mail: [info@mea-group.com](mailto:info@mea-group.com)  
[www.mea-group.com](http://www.mea-group.com)