

MATERIAL CHARACTERISTICS

POLYMER CONCRETE	on a Polyester resin basis, with mineral fillers, additives
COMPRESSIVE STRENGTH	≥ 90 N/mm ²
BENDING STRENGTH	≥ 22 N/mm ²
ELASTICITY MODULE	25.000 – 35.000 N/mm ²
DENSITY	2,1 – 2,3 kg/dm ³
COEFFICIENT OF LINEAR EXPANSION	Approx. 1.45 x 10 ⁻⁵ 1/K
HEAT RESISTANCE	100°C continuous load, up to 200°C with a load duration up to 5 min.
FROST RESISTANCE	- 50°C
WATER ABSORPTION	< 0,05% DIN 52 103 (A)

PURPOSE OF USE

Component for the line drainage of surfaces in order to collect, transport and discharge rainwater from adjacent fixed surfaces

** Not suitable for the diagonal or transverse travel of motorways and highways

MEADRAIN SV / SE / SG und SVF / SEF 1000

A 15, B 125, C 250, D 400**, E 600**

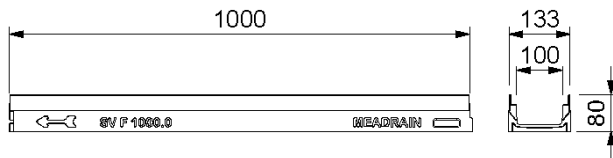
nominal width 100



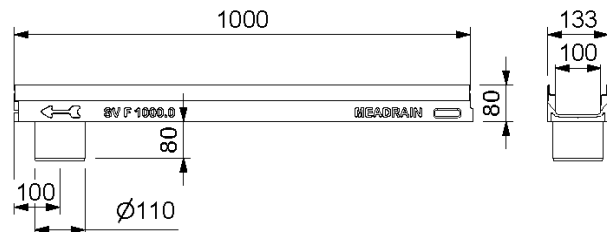
BUILDING SUCCESS

MEADRAIN SVF 1000 SHALLOW POLYMER CONCRETE DRAINAGE CHANNEL WITH 4 MM EDGE PROTECTION MADE OF GALVANISED STEEL, SEALING JOINT ACCORDING TO EN 1433

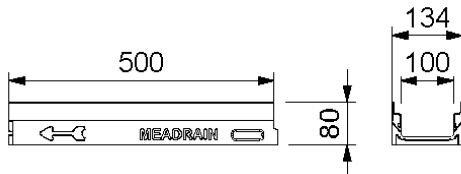
Clear width of the drainage channel body 100 mm, total width 133 mm. Suitable for all channel covers MEA 100 CLIPFIX with and without longitudinal shift protection, MEA TSL 100 and MEA TSH 100 TOPSLOT. Loading classes A 15 to E 600** according to EN 1433. Load capacity according to MEA installation instructions.



010154631



010154635



010154633

MEADRAIN SVF 1000 DRAINAGE CHANNEL BODY WITHOUT FALL, LOADING CLASS E 600** ACCORDING TO DIN EN 1433

Description	Order-No.	Length [mm]	Height [mm]	kg/unit
MEADRAIN SVF 1000.0/80 Channel 1)	010154631	1000	80	9,80
MEADRAIN SVF 1000.0 A/80 Drainage channel body with tight formed-in flanged drain socket Ø 110 mm 8)	010154635	1000	80	9,70
MEADRAIN SVF 1000.1/80 Channel 1)	010154633	500	80	4,90

** Not suitable for the diagonal or transverse travel of motorways and highways

- 1) Connection option for vertical drain Ø 110 mm
- 8) With tight formed-in drain socket Ø 110 mm

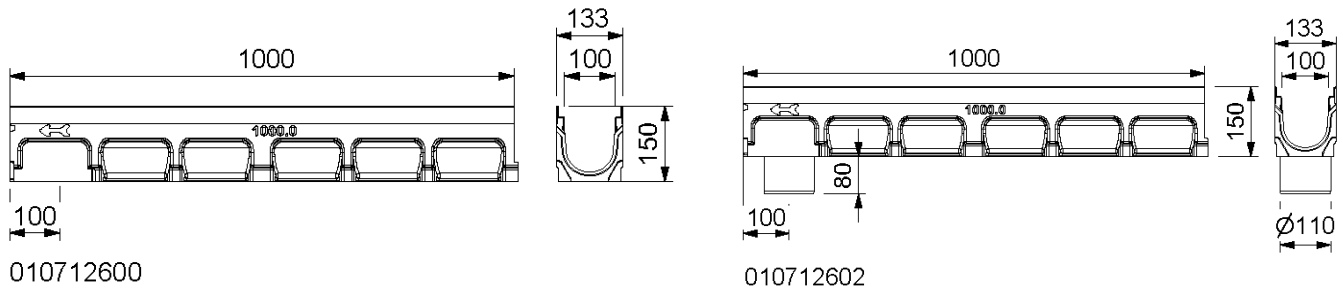
MEADRAIN SV / SE / SG und SVF / SEF 1000

A 15, B 125, C 250, D 400**, E 600**

nominal width 100

MEADRAIN SV 1000 POLYMER CONCRETE DRAINAGE CHANNEL WITH 4 MM EDGE PROTECTION MADE OF GALVANISED STEEL, SEALING JOINT ACCORDING TO EN 1433

Clear width of the drainage channel body 100 mm, total width 133 mm. Suitable for all channel covers MEA 100 CLIPFIX with and without longitudinal shift protection, MEA TSL 100 and MEA TSH 100 TOPSLOT. For the realization of water level slopes. Loading classes A 15 to E 600** according to EN 1433. Load capacity according to MEA installation instructions.



MEADRAIN SV 1000 DRAINAGE CHANNEL WITHOUT FALL, LOADING CLASS E 600** ACCORDING TO DIN EN 1433

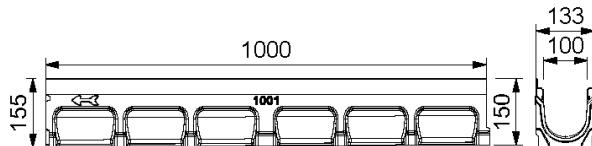
Description	Order-No.	Length [mm]	Height [mm]	kg/unit
MEADRAIN SV 1000.0 Channel 4)	010712600	1000	150	14,50
MEADRAIN SV 1000.0/A Drainage channel body with tight formed-in flanged drain socket Ø 110 mm 8)	010712602	1000	150	14,50
MEADRAIN SV 1000.1 Channel 4) 14)	010712604	500	150	8,02
MEADRAIN SV 1005.0 Channel 4)	010712618	1000	175	16,00
MEADRAIN SV 1005.0/A Drainage channel body with tight formed-in flanged drain socket Ø 110 mm 8)	010712620	1000	175	16,00
MEADRAIN SV 1005.1 Channel 4) 14)	010712622	500	175	8,50
MEADRAIN SV 1010.0 Channel 4)	010712636	1000	200	17,50
MEADRAIN SV 1010.0/A Drainage channel body with tight formed-in flanged drain socket Ø 110 mm 8)	010712638	1000	200	17,50
MEADRAIN SV 1010.1 Channel 4) 14)	010712640	500	200	9,00
MEADRAIN SV 1015.0 Channel 4)	010712642	1000	225	19,00
MEADRAIN SV 1015.0/A Drainage channel body with tight formed-in flanged drain socket Ø 110 mm 8)	010712644	1000	225	19,00
MEADRAIN SV 1015.1 Channel 4) 14)	010712646	500	225	9,50
MEADRAIN SV 1020.0 Channel 4)	010712648	1000	250	20,50
MEADRAIN SV 1020.0/A Drainage channel body with tight formed-in flanged drain socket Ø 110 mm 8)	010712650	1000	250	20,50
MEADRAIN SV 1020.1 Channel 4) 14)	010712652	500	250	10,40
MEADRAIN SV 1030.0 Channel 4)	010712654	1000	305	24,50
MEADRAIN SV 1030.0/A Drainage channel body with tight formed-in flanged drain socket Ø 110 mm 8)	010712656	1000	305	24,50
MEADRAIN SV 1030.1 Channel	010714100	500	305	12,93

** Not suitable for the diagonal or transverse travel of motorways and highways

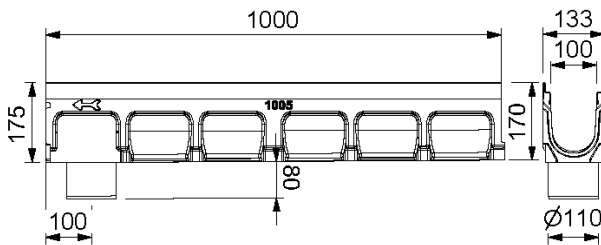
- 4) Connection option for vertical drain Ø 110 mm or to end cap with connection piece or to a gully / silt box.
- 8) With tight formed-in drain socket Ø 110 mm
- 14) Connection option for corner-, t- and cross- connections.

MEADRAIN SV 1000 POLYMER CONCRETE DRAINAGE CHANNEL WITH 4 MM EDGE PROTECTION MADE OF GALVANISED STEEL, SEALING JOINT ACCORDING TO EN 1433

Clear width of the channel body 100 mm, total width 133 mm. Suitable for all channel covers MEA 100 CLIPFIX with and without longitudinal shift protection, MEA TSL 100 and MEA TSH 100 TOPSLOT. For the realization of linear fall (with fall 0,5%). Loading classes A 15 to E 600** according to EN 1433. Load capacity according to MEA installation instructions.



010712606



010712616

MEADRAIN SV 1000 DRAINAGE CHANNEL BODY WITH FALL 0,5%, LOADING CLASS E 600** ACCORDING TO DIN EN 1433

Description	Order-No.	Length [mm]	Height [mm]	Height 2 [mm]	kg/unit
MEADRAIN SV 1001 Channel	010712606	1000	150	155	14,50
MEADRAIN SV 1002 Channel	010712608	1000	155	160	14,50
MEADRAIN SV 1003 Channel	010712610	1000	160	165	15,00
MEADRAIN SV 1004 Channel	010712612	1000	165	170	15,00
MEADRAIN SV 1005 Channel 4)	010712614	1000	170	175	15,50
MEADRAIN SV 1005/A Drainage channel body with tight formed-in flanged drain socket Ø 110 mm 8)	010712616	1000	170	175	14,02
MEADRAIN SV 1006 Channel	010712624	1000	175	180	16,00
MEADRAIN SV 1007 Channel	010712626	1000	180	185	16,50
MEADRAIN SV 1008 Channel	010712628	1000	185	190	16,50
MEADRAIN SV 1009 Channel	010712630	1000	190	195	17,00
MEADRAIN SV 1010 Channel 4)	010712632	1000	195	200	17,00
MEADRAIN SV 1010/A Drainage channel body with tight formed-in flanged drain socket Ø 110 mm 8)	010712634	1000	195	200	17,00
MEADRAIN SV 1011 Channel	010714102	1000	200	205	17,97

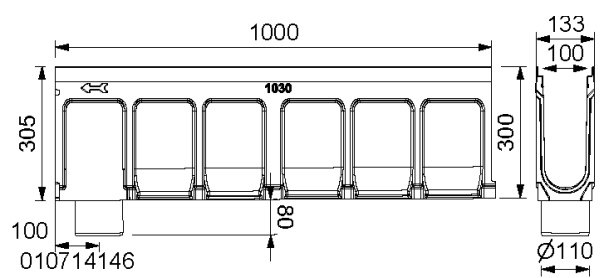
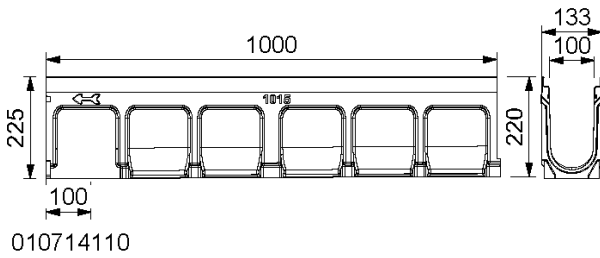
MEADRAIN SV / SE / SG und SVF / SEF 1000

A 15, B 125, C 250, D 400**, E 600**

nominal width 100



BUILDING SUCCESS



MEADRAIN SV 1000 DRAINAGE CHANNEL BODY WITH FALL 0,5%, LOADING CLASS E 600** ACCORDING TO DIN EN 1433

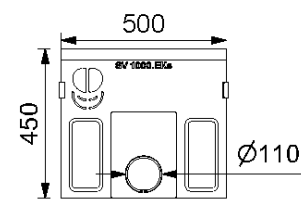
Description	Order-No.	Length [mm]	Height [mm]	Height 2 [mm]	kg/unit
MEADRAIN SV 1012 Channel	010714104	1000	205	210	18,47
MEADRAIN SV 1013 Channel	010714106	1000	210	215	18,77
MEADRAIN SV 1014 Channel	010714108	1000	215	220	19,1
MEADRAIN SV 1015 Channel 4)	010714110	1000	220	225	19,33
MEADRAIN SV 1015/A Drainage channel body with tight formed-in flanged drain socket Ø 110 mm 8)	010714112	1000	220	225	18,82
MEADRAIN SV 1016 Channel	010714114	1000	225	230	19,63
MEADRAIN SV 1017 Channel	010714116	1000	230	235	19,98
MEADRAIN SV 1018 Channel	010714118	1000	235	240	20,37
MEADRAIN SV 1019 Channel	010714120	1000	240	245	20,63
MEADRAIN SV 1020 Channel	010714122	1000	245	250	20,87
MEADRAIN SV 1020/A Drainage channel body with tight formed-in flanged drain socket Ø 110 mm 8)	010714124	1000	245	250	21,19
MEADRAIN SV 1021 Channel	010714126	1000	255	260	22,51
MEADRAIN SV 1022 Channel	010714128	1000	260	265	22,75
MEADRAIN SV 1023 Channel	010714130	1000	265	270	22,73
MEADRAIN SV 1024 Channel	010714132	1000	270	275	23,17
MEADRAIN SV 1025 Channel	010714134	1000	275	280	23,43
MEADRAIN SV 1026 Channel	010714136	1000	280	285	23,9
MEADRAIN SV 1027 Channel	010714138	1000	285	290	24,07
MEADRAIN SV 1028 Channel	010714140	1000	290	295	24,36
MEADRAIN SV 1029 Channel	010714142	1000	295	300	24,57
MEADRAIN SV 1030 Channel 4)	010714144	1000	300	305	24,93
MEADRAIN SV 1030/A Drainage channel body with tight formed-in flanged drain socket Ø 110 mm 8)	010714146	1000	300	305	24,27

** Not suitable for the diagonal or transverse travel of motorways and highways

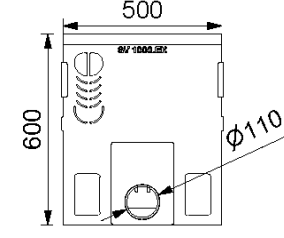
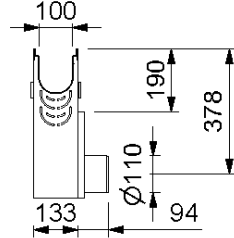
4) Connection option for vertical drain Ø 110 mm or to end cap with connection piece or to a gully / silt box.

8) With tight formed-in drain socket Ø 110 mm

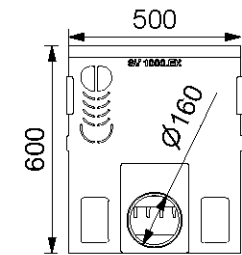
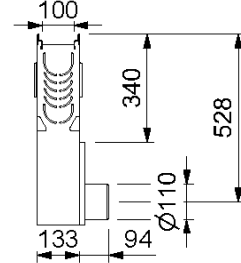
MEADRAIN SV 1000 UND SVF 1000 ACCESSORIES



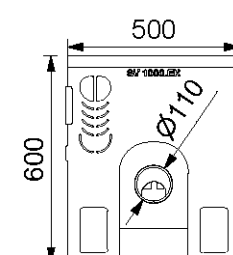
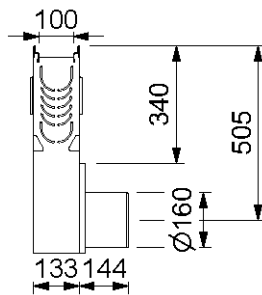
010712657



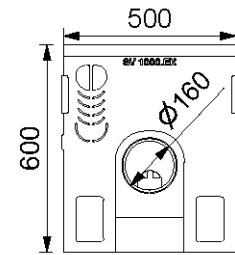
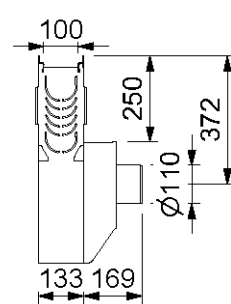
010712658



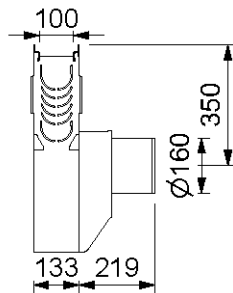
010712660



010712662



010712664

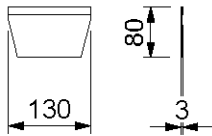


MEADRAIN SV 1000 GULLY WITH SEDIMENT BUCKET

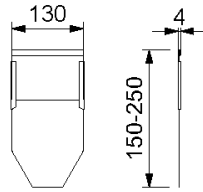
Description	Order-No.	Length [mm]	Height [mm]	kg/unit
MEADRAIN SV 1000.EK kurz Einlaufkasten, H=45 cm inkl. Schlammweimer, für Rohranschluss $\varnothing 110$ mm	010712657	500	455	28,50
MEADRAIN SV 1000.EK110 Gully incl. sediment bucket for pipe connection $\varnothing 110$ mm	010712658	500	600	35,00
MEADRAIN SV 1000.EK160 Gully incl. sediment bucket for pipe connection $\varnothing 160$ mm	010712660	500	600	35,00
MEADRAIN SV 1000.EK QG110 Gully incl. sediment bucket, with odour trap crosswise to flow direction $\varnothing 110$ mm	010712662	500	600	36,50
MEADRAIN SV 1000.EK QG160 Gully incl. sediment bucket, with odour trap crosswise to flow direction $\varnothing 160$ mm	010712664	500	600	37,00

** Not suitable for the diagonal or transverse travel of motorways and highways

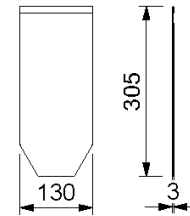
MEADRAIN SV 1000 UND SVF 1000 ACCESSORIES



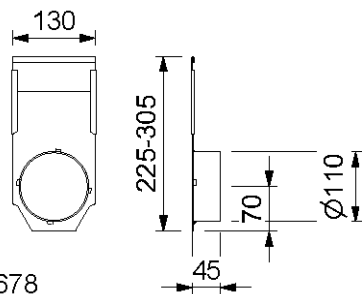
010154637



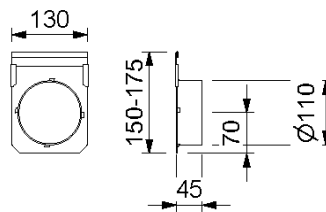
010712666



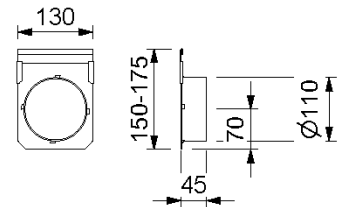
010712668



010712678



010712670



010712670

MEADRAIN SV 1000 / SVF 1000 END CAPS FOR SHALLOW CHANNEL

Description	Order-No.	Material	kg/unit
MEADRAIN SVF 1000.SE End cap for shallow channel start/end	010154637	Galv.steel	0,09
MEADRAIN SV/SG 1000-20.SE End cap for channel start/end, height-adjustable	010712666	Galv.steel	0,24
MEADRAIN SV/SG 1030.SE End cap for channel start/end, fixed height	010712668	Galv.steel	0,30
MEADRAIN SV/SG 1000-5.E End cap for channel end - height adjustable with connection piece Ø 110 mm	010712670	Galv.steel	0,39
MEADRAIN SV/SG 1005-15.E End cap for channel end, height adjustable with connection piece Ø 110 mm	010712676	Galv.steel	0,48
MEADRAIN SV/SG 1015-30.E End cap for channel end - height adjustable with connection piece Ø 110 mm	010712678	Galv.steel	0,68
MEADRAIN/MEAGARD/MEALINE Drainage set with Ø 110 mm connector, Sediment bucket and odour seal	010150730	PP	0,19

** Not suitable for the diagonal or transverse travel of motorways and highways

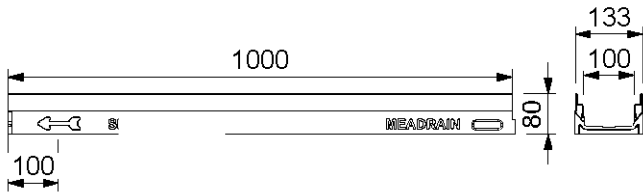
MEADRAIN SV / SE / SG und SVF / SEF 1000

A 15, B 125, C 250, D 400**, E 600**

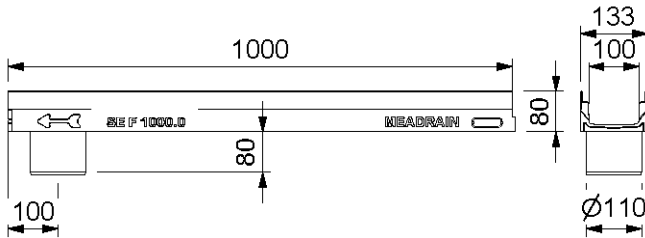
nominal width 100

MEADRAIN SE 1000 POLYMER CONCRETE DRAINAGE CHANNEL WITH 4 MM EDGE PROTECTION MADE OF STAINLESS STEEL, SEALING JOINT ACCORDING TO EN 1433

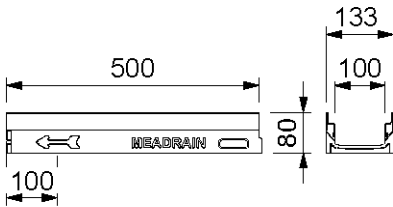
Clear width of the channel body 100 mm, total width 133 mm. For the realization of water level slopes. Suitable for the all channel covers MEA 100 CLIPFIX with and without longitudinal shift protection, MEA TSL 100 and MEA TSH 100 TOPSLOT. Loading classes A 15 to E 600** according to EN 1433. Load capacity according to MEA installation instructions.



010713484



010713488



010713486

MEADRAIN SEF 1000 DRAINAGE CHANNEL BODY WITHOUT FALL, LOADING CLASS E 600** ACCORDING TO DIN EN 1433

Description	Order-No.	Length [mm]	Height [mm]	kg/unit
MEADRAIN SEF 1000.0/80 Channel 1)	010713484	1000	80	9,80
MEADRAIN SEF 1000.0 A/80 Rinne mit Stützen Ø 110 mm 8)	010713488	1000	80	9,70
MEADRAIN SEF 1000.1/80 Channel 1)	010713486	500	80	4,90

** Not suitable for the diagonal or transverse travel of motorways and highways

1) Connection option for vertical drain Ø 110 mm

8) With tight formed-in drain socket Ø 110 mm

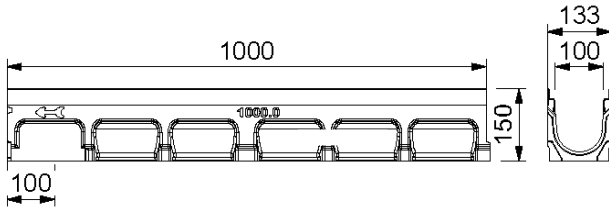
MEADRAIN SV / SE / SG und SVF / SEF 1000

A 15, B 125, C 250, D 400**, E 600**

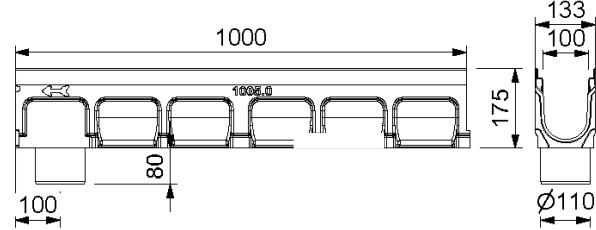
nominal width 100

MEADRAIN SE 1000 POLYMER CONCRETE DRAINAGE CHANNEL WITH 4 MM EDGE PROTECTION MADE OF STAINLESS STEEL, SEALING JOINT ACCORDING TO EN 1433

Clear width of the channel body 100 mm, total width 133 mm. For the realization of water level slopes. Suitable for the all channel covers MEA 100 CLIPFIX with and without longitudinal shift protection, MEA TSL 100 and MEA TSH 100 TOPSLOT. Loading classes A 15 to E 600** according to EN 1433. Load capacity according to MEA installation instructions.



010713492



010713512

MEADRAIN SE 1000 DRAINAGE CHANNEL BODY WITHOUT FALL, LOADING CLASS E 600** ACCORDING TO DIN EN 1433

Description	Order-No.	Length [mm]	Height [mm]	kg/unit
MEADRAIN SE 1000.0 Channel 4)	010713492	1000	150	14,50
MEADRAIN SE 1000.0/A Drainage channel body with tight formed-in flanged drain socket Ø 110 mm 8)	010713494	1000	150	14,50
MEADRAIN SE 1000.1 Channel 4) 14)	010713496	500	150	8,02
MEADRAIN SE 1005.0 Channel 4)	010713510	1000	175	14,02
MEADRAIN SE 1005.0/A Drainage channel body with tight formed-in flanged drain socket Ø 110 mm 8)	010713512	1000	175	16,00
MEADRAIN SE 1005.1 Channel 4) 14)	010713514	500	175	8,50
MEADRAIN SE 1010.0 Channel 4)	010713528	1000	200	17,50
MEADRAIN SE 1010.0/A Drainage channel body with tight formed-in flanged drain socket Ø 110 mm 8)	010713530	1000	200	17,50
MEADRAIN SE 1010.1 Channel 4) 14)	010713532	500	200	9,00
MEADRAIN SE 1015.0 Channel 4)	010713534	1000	225	19,00
MEADRAIN SE 1015.0/A Drainage channel body with tight formed-in flanged drain socket Ø 110 mm 8)	010713536	1000	225	19,00
MEADRAIN SE 1015.1 Channel 4) 14)	010713538	500	225	9,50
MEADRAIN SE 1020.0 Channel 4)	010713540	1000	250	20,50
MEADRAIN SE 1020.0/A Drainage channel body with tight formed-in flanged drain socket Ø 110 mm 8)	010713542	1000	250	20,50
MEADRAIN SE 1020.1 Channel 4) 14)	010713544	500	250	10,40
MEADRAIN SE 1030.0 Channel 4)	010713546	1000	305	24,50
MEADRAIN SE 1030.0/A Drainage channel body with tight formed-in flanged drain socket Ø 110 mm 8)	010713548	1000	305	24,50
MEADRAIN SE 1030.1 Channel	010714150	500	305	12,51

** Not suitable for the diagonal or transverse travel of motorways and highways

4) Connection option for vertical drain Ø 110 mm or to end cap with connection piece or to a gully / silt box.

8) With tight formed-in drain socket Ø 110 mm

14) Connection option for corner-, t- and cross- connections.

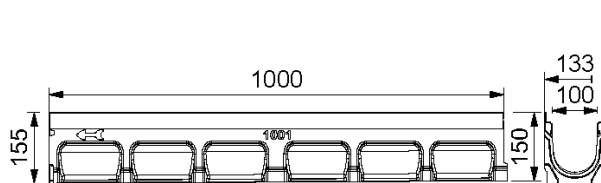
MEADRAIN SV / SE / SG und SVF / SEF 1000

A 15, B 125, C 250, D 400**, E 600**

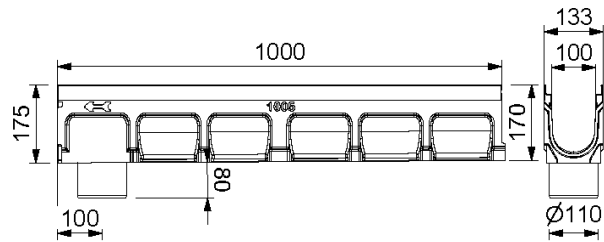
nominal width 100

MEADRAIN SE 1000 POLYMER CONCRETE DRAINAGE CHANNEL WITH 4 MM EDGE PROTECTION MADE OF STAINLESS STEEL, SEALING JOINT ACCORDING TO EN 1433

Clear width of the channel body 100 mm, total width 133 mm. Suitable for all channel covers MEA 100 CLIPFIX with and without longitudinal shift protection, MEA TSL 100 and MEA TSH 100 TOPSLOT. For the realization of linear fall (with fall 0,5%). Loading classes A 15 to E 600** according to EN 1433. Load capacity according to MEA installation instructions.



010713498



010713508

MEADRAIN SE 1000 DRAINAGE CHANNEL BODY WITH FALL 0,5%, LOADING CLASS E 600** ACCORDING TO DIN EN 1433

Description	Order-No.	Length [mm]	Height [mm]	Height 2 [mm]	kg/unit
MEADRAIN SE 1001 Channel *)	010713498	1000	150	155	14,50
MEADRAIN SE 1002 Channel *)	010713500	1000	155	160	14,50
MEADRAIN SE 1003 Channel *)	010713502	1000	160	165	15,00
MEADRAIN SE 1004 Channel *)	010713504	1000	165	170	15,00
MEADRAIN SE 1005 Channel *)4)	010713506	1000	170	175	15,50
MEADRAIN SE 1005/A Drainage channel body with tight formed-in flanged drain socket Ø 110 mm *)8)	010713508	1000	170	175	15,50
MEADRAIN SE 1006 Channel *)	010713516	1000	175	180	16,00
MEADRAIN SE 1007 Channel *)	010713518	1000	180	185	16,50
MEADRAIN SE 1008 Channel *)	010713520	1000	185	190	16,50
MEADRAIN SE 1009 Channel *)	010713522	1000	190	195	17,00
MEADRAIN SE 1010 Channel *)4)	010713524	1000	195	200	17,00
MEADRAIN SE 1010/A Drainage channel body with tight formed-in flanged drain socket Ø 110 mm *)8)	010713526	1000	195	200	17,00
MEADRAIN SE 1011 Channel *)	010714152	1000	200	205	18,09
MEADRAIN SE 1012 Channel *)	010714154	1000	205	210	19,55
MEADRAIN SE 1013 Channel *)	010714156	1000	210	215	18,75
MEADRAIN SE 1014 Channel *)	010714158	1000	215	220	18,93
MEADRAIN SE 1015 Channel *)4)	010714160	1000	220	225	19,20
MEADRAIN SE 1015/A Drainage channel body with tight formed-in flanged drain socket Ø 110 mm *)8)	010714162	1000	220	225	18,82
MEADRAIN SE 1016 Channel *)	010714164	1000	225	230	19,68

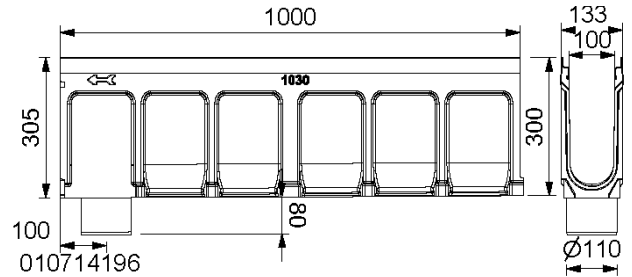
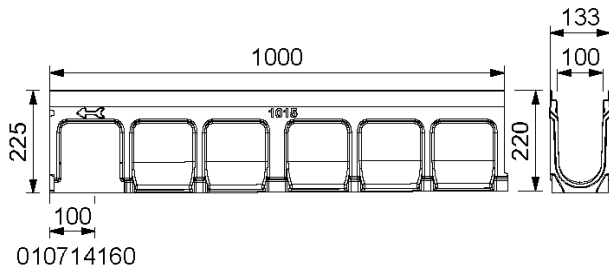
MEADRAIN SV / SE / SG und SVF / SEF 1000

A 15, B 125, C 250, D 400**, E 600**

nominal width 100



BUILDING SUCCESS



MEADRAIN SE 1000 DRAINAGE CHANNEL BODY WITH FALL 0,5%, LOADING CLASS E 600** ACCORDING TO DIN EN 1433

Description	Order-No.	Length [mm]	Height [mm]	Height 2 [mm]	kg/unit
MEADRAIN SE 1017 Channel *)	010714166	1000	230	235	20,15
MEADRAIN SE 1018 Channel *)	010714168	1000	235	240	20,34
MEADRAIN SE 1019 Channel *)	010714170	1000	240	245	20,72
MEADRAIN SE 1020 Channel *)4)	010714172	1000	245	250	20,95
MEADRAIN SE 1020/A Drainage channel body with tight formed-in flanged drain socket Ø 110 mm *)8)	010714174	1000	245	250	21,20
MEADRAIN SE 1021 Channel *)	010714176	1000	255	260	22,34
MEADRAIN SE 1022 Channel *)	010714178	1000	260	265	22,82
MEADRAIN SE 1023 Channel *)	010714180	1000	265	270	22,87
MEADRAIN SE 1024 Channel *)	010714182	1000	270	275	23,91
MEADRAIN SE 1025 Channel *)	010714184	1000	275	280	23,53
MEADRAIN SE 1026 Channel *)	010714186	1000	280	285	23,93
MEADRAIN SE 1027 Channel *)	010714188	1000	285	290	23,90
MEADRAIN SE 1028 Channel *)	010714190	1000	290	295	24,48
MEADRAIN SE 1029 Channel *)	010714192	1000	295	300	24,87
MEADRAIN SE 1030 Channel *)4)	010714194	1000	300	305	24,62
MEADRAIN SE 1030/A Drainage channel body with tight formed-in flanged drain socket Ø 110 mm *)8)	010714196	1000	300	305	24,27

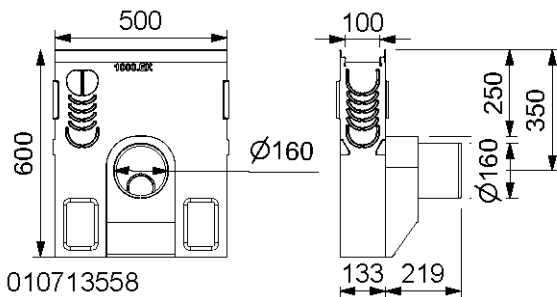
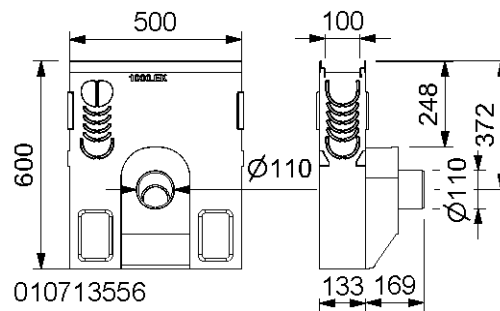
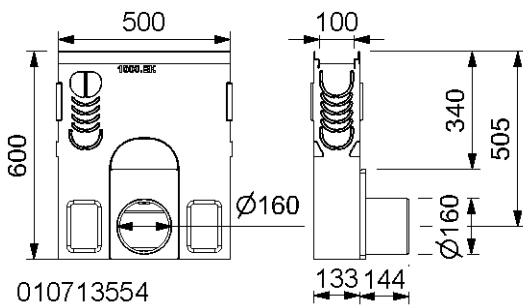
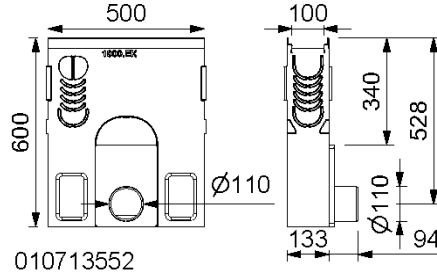
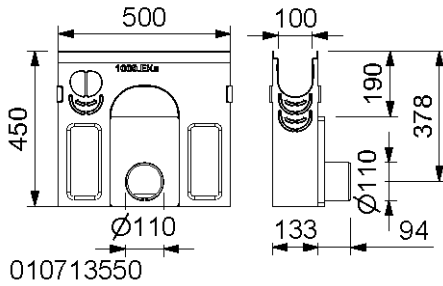
* Delivery time on demand.

** Not suitable for the diagonal or transverse travel of motorways and highways

4) Connection option for vertical drain Ø 110 mm or to end cap with connection piece or to a gully / silt box.

8) With tight formed-in drain socket Ø 110 mm

MEADRAIN SE 1000 UND SEF 1000 ACCESSORIES

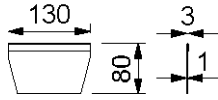


MEADRAIN SE 1000 GULLY WITH SEDIMENT BUCKET**

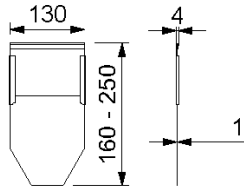
Description	Order-No.	Length [mm]	Height [mm]	kg/unit
MEADRAIN SE 1000.EK short gully, H=45 cm incl. sediment bucket for pipe connection Ø 110 mm	010713550	500	455	28,50
MEADRAIN SE 1000.EK110 Gully incl. sediment bucket for pipe connection Ø 110 mm	010713552	500	600	35,00
MEADRAIN SE 1000.EK160 Gully incl. sediment bucket for pipe connection Ø 160 mm	010713554	500	600	35,00
MEADRAIN SE 1000.EK QG110 Gully incl. sediment bucket, with odour trap crosswise to flow direction Ø 110 mm	010713556	500	600	36,50
MEADRAIN SE 1000.EK QG160 Gully incl. sediment bucket, with odour trap crosswise to flow direction Ø 160 mm	010713558	500	600	37,00

** Not suitable for the diagonal or transverse travel of motorways and highways

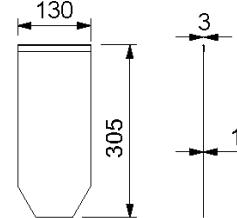
MEADRAIN SE 1000 / SEF 1000 END CAPS



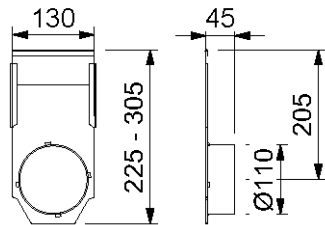
010713490



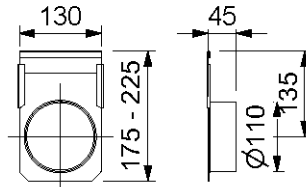
010713560



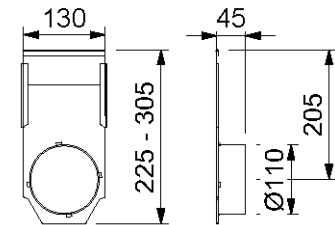
010713562



010713568



010713566



010713568

MEADRAIN SE 1000 / SEF 1000 END CAPS

Description	Order-No.	Length [mm]	Height [mm]
MEADRAIN SEF 1000.SE End cap for shallow channel start/end	010713490	Stainl. steel	0,09
MEADRAIN SE 1000-20.SE End cap for channel start/end, height-adjustable	010713560	Stainl. steel	0,40
MEADRAIN SE 1030.SE End cap for channel start/end, fixed height	010713562	Stainl. steel	0,50
MEADRAIN SE 1000-5.E End cap for channel end - height adjustable with connector Ø 110 mm	010713564	Stainl. steel	0,30
MEADRAIN SE 1005-15.E End cap for channel end - height adjustable with connector Ø 110 mm	010713566	Stainl. steel	0,40
MEADRAIN SE 1015-30.E End cap for channel end - height adjustable with connector Ø 110 mm	010713568	Stainl. steel	0,68
MEADRAIN/MEAGARD/MEALINE Drainage set with Ø 110 mm connector, Sediment bucket and odour seal	010150730	PP	0,19

** Not suitable for the diagonal or transverse travel of motorways and highways

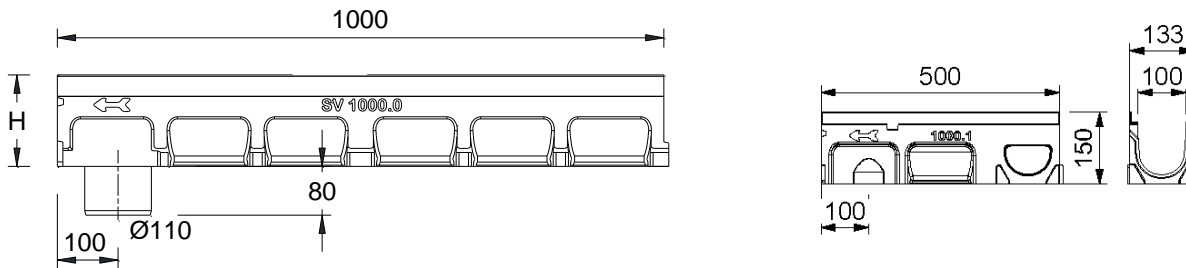
MEADRAIN SV / SE / SG und SVF / SEF 1000

A 15, B 125, C 250, D 400**, E 600**

nominal width 100

MEADRAIN SG 1000 POLYMER CONCRETE DRAINAGE CHANNEL WITH 4 MM EDGE PROTECTION MADE OF DUCTILE IRON, SEALING JOINT ACCORDING TO EN 1433

Clear width of the channel body 100 mm, total width 133 mm for the realization of water level slopes. Suitable for all channel covers MEA 100 CLIPFIX with and without longitudinal shift protection, MEA TSL 100 and MEA TSH 100 TOPSLOT. Loading classes A 15 to E 600** according to EN 1433. Load capacity according to MEA installation instructions.



010713610

010713608

MEADRAIN SG 1000 DRAINAGE CHANNEL BODY WITHOUT FALL, LOADING CLASS E 600** ACCORDING TO DIN EN 1433

Description	Order-No.	Length [mm]	Height [mm]	Description
MEADRAIN SG 1000.0 Channel 4)	010713606	1000	150	14,50
MEADRAIN SG 1000.0/A Drainage channel body with tight formed-in flanged drain socket 8)	010713608	1000	150	14,50
MEADRAIN SG 1000.1 Channel 4) 14)	010713610	500	150	8,02
MEADRAIN SG 1005.0 Channel 4)	010713612	1000	175	14,02
MEADRAIN SG 1005.0/A Drainage channel body with tight formed-in flanged drain socket Ø 110 mm 8)	010713614	1000	175	16,00
MEADRAIN SG 1005.1 Channel 4) 14)	010713616	500	175	8,50
MEADRAIN SG 1010.0 Channel 4)	010713618	1000	200	17,50
MEADRAIN SG 1010.0/A Drainage channel body with tight formed-in flanged drain socket Ø 110 mm 8)	010713620	1000	200	17,50
MEADRAIN SG 1010.1 Rinne 4) 14)	010713622	500	200	9,00
MEADRAIN SG 1015.0 Rinne 4)	010713624	1000	225	19,00
MEADRAIN SG 1015.0/A Drainage channel body with tight formed-in flanged drain socket Ø 110 mm 8)	010713626	1000	225	19,00
MEADRAIN SG 1015.1 Rinne 4) 14)	010713628	500	225	9,50
MEADRAIN SG 1020.0 Rinne 4)	010713630	1000	250	20,50
MEADRAIN SG 1020.0/A Drainage channel body with tight formed-in flanged drain socket mm 8)	010713632	1000	250	20,50
MEADRAIN SG 1020.1 Rinne 4) 14)	010713634	500	250	10,40
MEADRAIN SG 1030.0 Rinne 4)	010713636	1000	305	24,50
MEADRAIN SG 1030.0/A Drainage channel body with tight formed-in flanged drain socket Ø 110 mm 8)	010713638	1000	305	24,50
MEADRAIN SG 1030.1 Rinne	010714200	500	305	12,51

** Not suitable for the diagonal or transverse travel of motorways and highways

4) Connection option for vertical drain Ø 110 mm or to end cap with connection piece or to a gully / silt box.

8) With tight formed-in drain socket Ø 110 mm

14) Connection option for corner-, t- and cross- connections.

MEADRAIN SV / SE / SG und SVF / SEF 1000

A 15, B 125, C 250, D 400**, E 600**

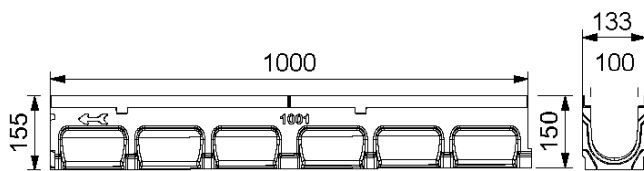
nominal width 100



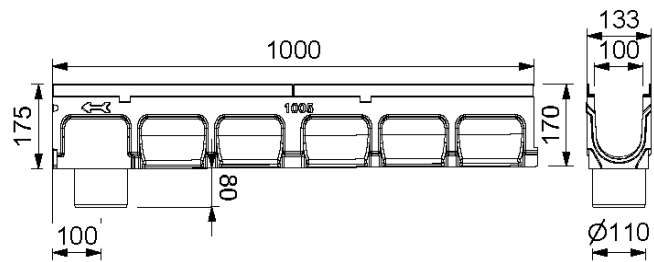
BUILDING SUCCESS

MEADRAIN SG 1000 POLYMERE CONCRETE DRAINAGE CHANNEL WITH 4 MM EDGE PROTECTION MADE OF DUCTILE IRON, SEALING JOINT ACCORDING TO EN 1433

Clear width of the channel body 100 mm, total width 133 mm for the realization of water level slopes. Suitable for all channel covers MEA 100 CLIPFIX with and without longitudinal shift protection, MEA TSL 100 and MEA TSH 100 TOPSLOT. Loading classes A 15 to E 600** according to EN 1433. Load capacity according to MEA installation instructions.



010713640



010713650

MEADRAIN SG 1000 DRAINAGE CHANNEL BODY WITH FALL 0,5 %, LOADNG CLASS E 600** ACCORDING TO DIN EN 1433

Description	Order-No.	Length [mm]	Height [mm]	Height 2 [mm]	kg/unit
MEADRAIN SG 1001 Channel *)	010713640	1000	150	155	14,50
MEADRAIN SG 1002 Channel *)	010713642	1000	155	160	14,50
MEADRAIN SG 1003 Channel *)	010713644	1000	160	165	15,00
MEADRAIN SG 1004 Channel *)	010713646	1000	165	170	15,00
MEADRAIN SG 1005 Channel *)4)	010713648	1000	170	175	15,50
MEADRAIN SG 1005/A Drainage channel body with tight formed-in flanged drain socket mit Stutzen Ø 110 mm *)8)	010713650	1000	170	175	15,50
MEADRAIN SG 1006 Channel *)	010713652	1000	175	180	16,00
MEADRAIN SG 1007 Channel *)	010713654	1000	180	185	16,50
MEADRAIN SG 1008 Channel *)	010713656	1000	185	190	16,50
MEADRAIN SG 1009 Channel *)	010713658	1000	190	195	17,00
MEADRAIN SG 1010 Channel *)4)	010713660	1000	195	200	17,00
MEADRAIN SG 1010/A Drainage channel body with tight formed-in flanged drain socket Ø 110 mm *)8)	010713662	1000	195	200	17,00
MEADRAIN SG 1011 Channel *)	010714202	1000	200	205	17,70
MEADRAIN SG 1012 Channel *)	010714204	1000	205	210	17,98
MEADRAIN SG 1013 Channel *)	010714206	1000	210	215	18,26
MEADRAIN SG 1014 Channel *)	010714208	1000	215	220	18,54
MEADRAIN SG 1015 Channel *)4)	010714210	1000	220	225	18,82
MEADRAIN SG 1015/A Drainage channel body with tight formed-in flanged drain socket Ø 110 mm *)8)	010714212	1000	220	225	18,82

MEADRAIN SV / SE / SG und SVF / SEF 1000

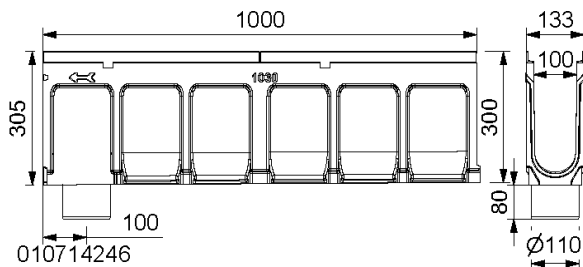
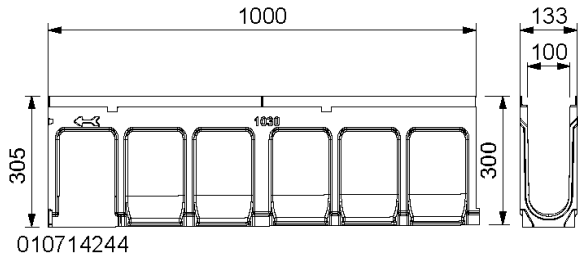
A 15, B 125, C 250, D 400**, E 600**

nominal width 100



BUILDING SUCCESS

MEADRAIN SG 1000 DRAINAGE CHANNEL BODY WITH FALL 0,5 %, LOADNG CLASS E 600** ACCORDING TO DIN EN 1433



Description	Order-No.	Length [mm]	Height [mm]	Height 2 [mm]	kg/unit
MEADRAIN SG 1016 Channel *)	010714214	1000	225	230	19,10
MEADRAIN SG 1017 Channel *)	010714216	1000	230	235	19,38
MEADRAIN SG 1018 Channel *)	010714218	1000	235	240	19,66
MEADRAIN SG 1019 Channel *)	010714220	1000	240	245	19,94
MEADRAIN SG 1020 Channel *)4)	010714222	1000	245	250	20,22
MEADRAIN SG 1020/A Drainage channel body with tight formed-in flanged drain socket Ø 110 mm *)8)	010714224	1000	245	250	20,22
MEADRAIN SG 1021 Channel *)	010714226	1000	255	260	21,75
MEADRAIN SG 1022 Channel *)	010714228	1000	260	265	22,03
MEADRAIN SG 1023 Channel *)	010714230	1000	265	270	22,31
MEADRAIN SG 1024 Channel *)	010714232	1000	270	275	22,59
MEADRAIN SG 1025 Channel *)	010714234	1000	275	280	22,87
MEADRAIN SG 1026 Channel *)	010714236	1000	280	285	23,15
MEADRAIN SG 1027 Channel *)	010714238	1000	285	290	23,43
MEADRAIN SG 1028 Channel *)	010714240	1000	290	295	23,71
MEADRAIN SG 1029 Channel *)	010714242	1000	295	300	23,99
MEADRAIN SG 1030 Channel *)4)	010714244	1000	300	305	24,27
MEADRAIN SG 1030/A Drainage channel body with tight formed-in flanged drain socket Ø 110 mm *)8)	010714246	1000	300	305	27,27

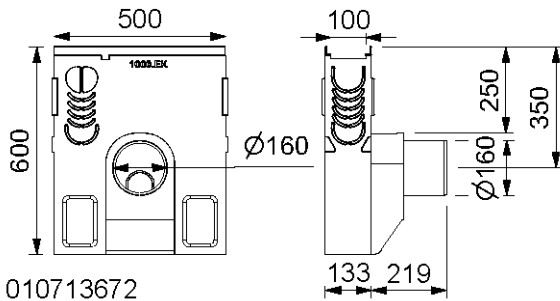
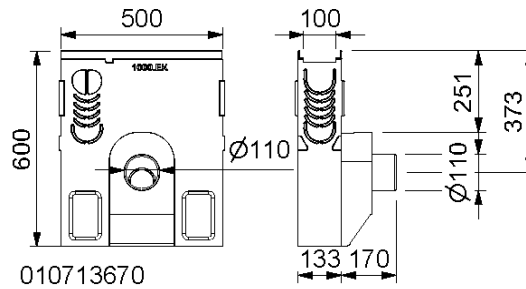
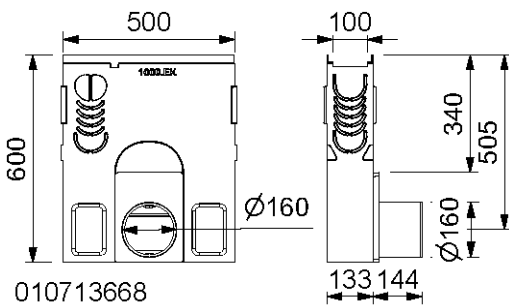
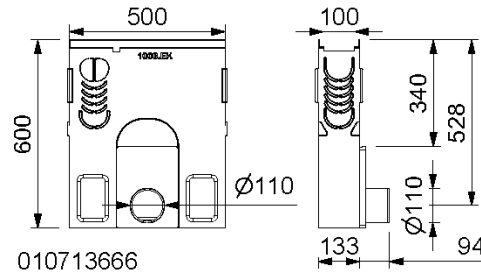
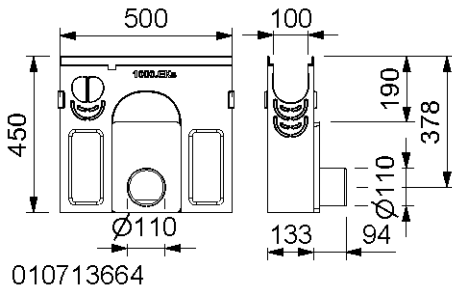
* Delivery time on demand.

** Not suitable for the diagonal or transverse travel of motorways and highways

4) Connection option for vertical drain Ø 110 mm or to end cap with connection piece or to a gully / silt box.

8) With tight formed-in drain socket Ø 110 mm

MEADRAIN SG 1000 ACCESSORIES

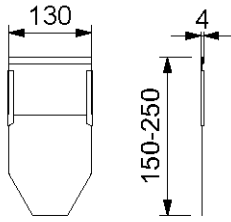


MEADRAIN SG 1000 GULLY**

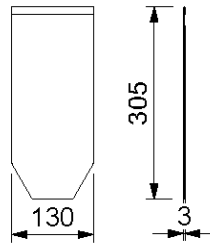
Description	Order-No.	Length [mm]	Height [mm]	kg/unit
MEADRAIN SG 1000.EK short gully, H=45 cm incl. sediment bucket for pipe connection Ø 110 mm	010713664	500	455	28,50
MEADRAIN SG 1000.EK110 Gully incl. sediment bucket for pipe connection Ø 110 mm	010713666	500	600	35,00
MEADRAIN SG 1000.EK160 Gully incl. sediment bucket for pipe connection Ø 160 mm	010713668	500	600	35,00
MEADRAIN SG 1000.EK QG110 Gully incl. sediment bucket, with odour trap crosswise to flow direction Ø 110 mm	010713670	500	600	36,50
MEADRAIN SG 1000.EK QG160 Gully incl. sediment bucket, with odour trap crosswise to flow direction Ø 160 mm	010713672	500	600	37,00

** Not suitable for the diagonal or transverse travel of motorways and highways

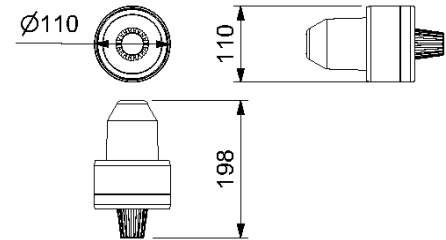
MEADRAIN SG 1000 END CAPS



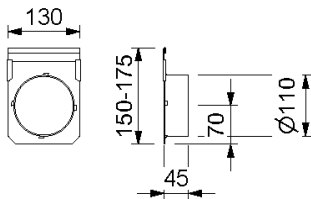
010712666



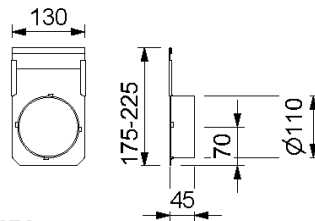
010712668



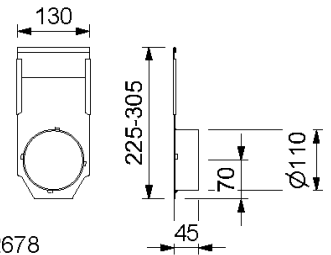
010150730



010712670



010712676



010712678

MEADRAIN SG 1000 END CAPS

Description	Order-No.	Material	Kg/unit
MEADRAIN SV/SG 1000-20.SE Stirrplatte, End cap for shallow channel start/end, height-adjustable	010712666	Galv.steel	0,24
MEADRAIN SV/SG 1030.SE End cap for shallow channel start/end fixed height	010712668	Galv.steel	0,30
MEADRAIN SV/SG 1000-5.E End cap for channel end – height adjustable with connector Ø 110 mm	010712670	Galv.steel	0,39
MEADRAIN SV/SG 1005-15.E End cap for channel end-height adjustable With connector Ø 110 mm	010712676	Galv.steel	0,48
MEADRAIN SV/SG 1015-30.E End cap for channel end-heightadjustable with connector Ø 110 mm	010712678	Galv.steel	0,68
DRAIN/GARD Drainage set with connector Ø 110 mm, dirt trap and odour trap	010150730	PP	0,19

** Not suitable for the diagonal or transverse travel of motorways and highways

This edition of the technical data sheet is valid on its own from October 2021, until a revised version is published, and replaces earlier publications. The current version is available for download at www.mea-group.com.

MEA Bautechnik GmbH
 Geschäftsbereich Water Management
 Sudetenstraße 1
 86551 Aichach
 Tel.: +49 (0) 82 51. 91 0
 Fax: +49 (0) 82 51. 91 13 06
 E-Mail: info@mea-group.com
www.mea-group.com