

MATERIAL CHARACTERISTICS

POLYMER CONCRETE	on a Polyester resin basis, with mineral fillers, additives
COMPRESSIVE STRENGTH	≥ 90 N/mm ²
BENDING STRENGTH	≥ 22 N/mm ²
ELASTICITY MODULE	25,000 – 35,000 N/mm ²
DENSITY	2,1 – 2,3 kg/dm ³
COEFFICIENT OF LINEAR EXPANSION	Approx. 1.45×10^{-5} 1/K
HEAT RESISTANCE	100°C continuous load, up to 200°C with a load duration up to 5 min.
FROST RESISTANCE	- 50 °C
WATER PENETRATION LEVEL	0 mm
WATER ABSORPTION	< 0,05% DIN 52 103 (A)
MATERIAL STRUCTURE	Capillary free

PURPOSE OF USE

Component for the line drainage of surfaces in order to collect, transport and discharge rainwater from adjacent fixed surfaces.

**) Not suitable for the diagonal or transverse travel of motorways and highways.

MEAKERB SPLAY 320 & 500

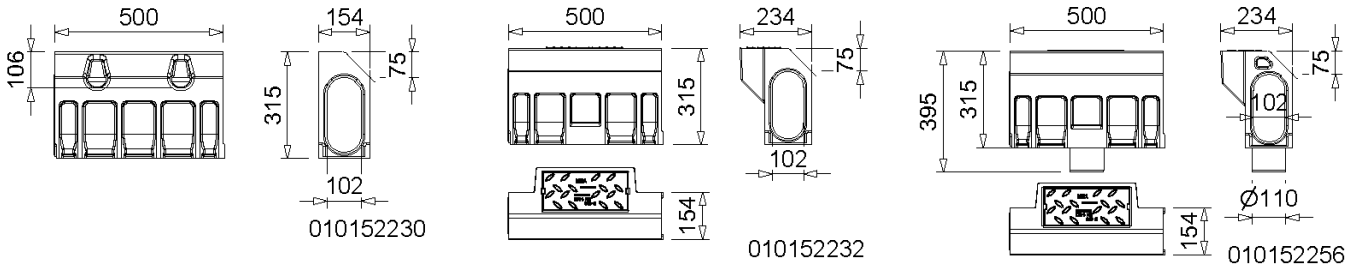
A 15, B 125, C 250, D 400**

CW 100

BUILDING SUCCESS

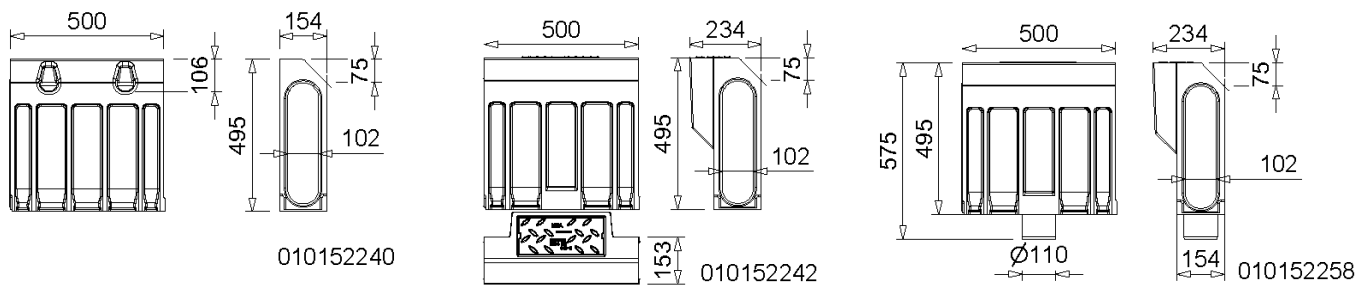
MEAKERB SPLAY POLYMER CONCRETE DRAINAGE CHANNEL ONE-PIECE KERBSTONE CHANNEL COMBINATION

Clear width of the channel body 100 mm, total width 154 mm with 45° bevel, kerb-height above top of pavement 10 cm. Loading class D 400** following to EN 1433.



MEAKERB SPLAY 320-SYSTEM

Designation	Ord. No.	Length [mm]	Height [mm]	kg/unit
MEAKERB SPLAY 320 kerbstone-channel combination-0.5 m	010152230	500	315	21,10
MEAKERB SPLAY 320.AP inspection element incl. cover-0.5 m, connector for back foldout horizontal outlet Ø 110 mm *)	010152232	500	315	32,50
MEAKERB SPLAY 320.AP/A inspection element incl. vertical outlet connection Ø 110 mm and cover-0.5 m, connector for horizontal outlet Ø 110 mm which can be knocked out at the back *)	010152256	500	315	27,00



MEAKERB SPLAY 500-SYSTEM

Designation	Ord. No.	Length [mm]	Height [mm]	kg/unit
MEAKERB SPLAY 500 kerbstone-channel combination-0.5 m	010152240	500	495	27,80
MEAKERB SPLAY 500.AP inspection element incl. cover-0.5 m, connector for back foldout horizontal outlet Ø 110/160 mm *)	010152242	500	495	39,80
MEAKERB SPLAY 500.AP/A inspection element incl. vertical outlet connection Ø 110 mm and cover-0.5 m, connector for horizontal outlet Ø 110/160 mm which can be knocked out at the back *)	010152258	500	495	33,70

*) Delivery time on demand

**) Not suitable for the diagonal or transverse travel of motorways and highways.

MEAKERB SPLAY 320 & 500

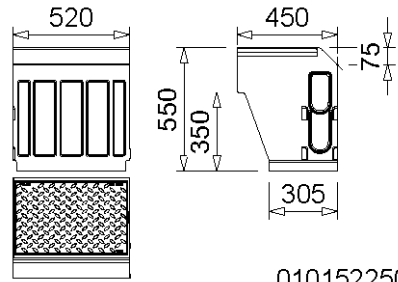
A 15, B 125, C 250, D 400**

CW 100

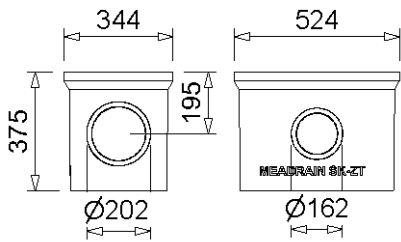


BUILDING SUCCESS

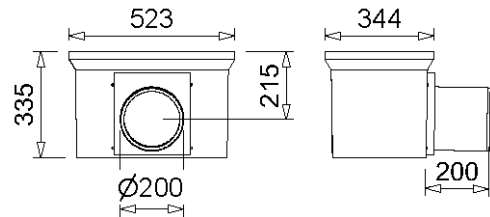
ACCESSORIES FOR ONE-PIECE KERBSTONE CHANNEL COMBINATION MEAKERB SPLAY



010152250



010154709



010154728

MEAKERB SPLAY 320/500 GULLY

Designation	Ord. No.	Length [mm]	Height [mm]	kg/unit
MEAKERB SPLAY.G Gully upper part suitable for SPLAY 320 and SPLAY 500 incl. ductile iron frame and closed ductile iron cover-D 400-PX *)	010152250	520	550	53,50
MEA SK-ZT Gully intermediate part made of polymer concrete for a height extension	010154709	524	375	23,31
MEA SK-UT short Gully lower part, with integrated drain outlet Ø 160 mm	010154726	524	335	25,16
MEA SK-UT short Gully lower part, with integrated drain outlet Ø 200 mm	010154728	524	335	27,00
MEA Gully plastic sediment bucket-short for gully with upper and lower part	010154714	-	-	1,90
MEA Gully plastic sediment bucket-long for gully with upper, intermediate and lower part *)	010154718	-	-	2,50

*) Delivery time on demand

**) Not suitable for the diagonal or transverse travel of motorways and highways.

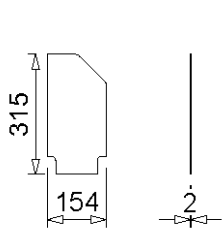
MEAKERB SPLAY 320 & 500

A 15, B 125, C 250, D 400**

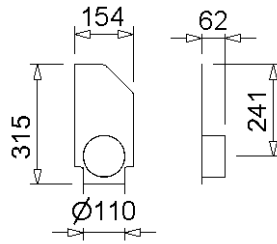
CW 100



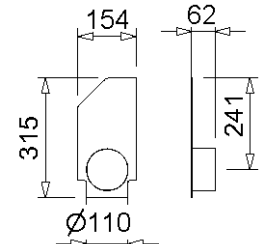
BUILDING SUCCESS



010152234



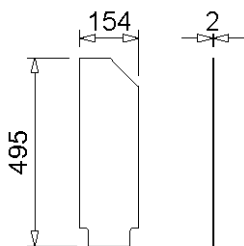
010152236



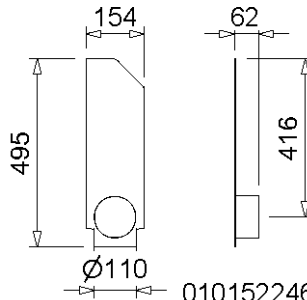
010152238

MEAKERB SPLAY 320 END CAPS

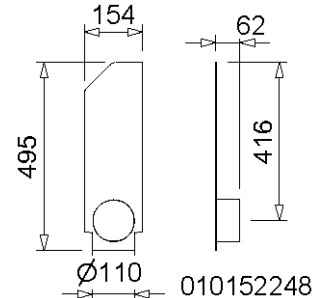
Designation	Ord. No.	Material	Height [mm]	kg/unit
MEAKERB SPLAY 320.SE end cap closed for channel start/end	010152234	Galv. steel	315	0,10
MEAKERB SPLAY 320.E end cap with socket Ø 110 mm left for pipe connection left channel side	010152236	Galv. steel	315	0,80
MEAKERB SPLAY 320.E end cap with socket Ø 110 mm right for pipe connection right channel side	010152238	Galv. steel	315	0,80



010152244



010152246



010152248

MEAKERB SPLAY 500 END CAPS

Designation	Ord. No.	Material	Height [mm]	kg/unit
MEAKERB SPLAY 500.SE end cap closed for channel start/end	010152244	Galv. steel	495	1,10
MEAKERB SPLAY 500.E end cap with socket Ø 110 mm left for pipe connection left channel side	010152246	Galv. steel	495	1,20
MEAKERB SPLAY 500.E end cap with socket Ø 110 mm right for pipe connection right channel side	010152248	Galv. steel	495	1,20

**) Not suitable for the diagonal or transverse travel of motorways and highways.

This edition of the technical data sheet is valid from August 2023 until the publication of a revised version and replaces earlier publications. The current version is available for download at www.mea-group.com.

MEA Bautechnik GmbH
 Business unit Water Management
 Sudetenstraße 1
 86551 Aichach
 Tel.: +49 (0) 82 51. 91 0
 Fax: +49 (0) 82 51. 91 13 06
 E-Mail: info@mea-group.com
www.mea-group.com

MEAKERB SPLAY 320 / 500 SYSTEM OVERVIEW

