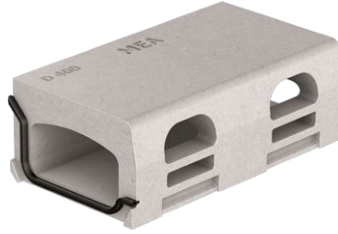


MEAKERB BRIDGE 200

A 15, B 125, C 250, D 400 Nominal width 200



BUILDING SUCCESS



MEAKERB BRIDGE 200-75

MEAKERB BRIDGE 200-75 OPA

Material properties

POLYMER CONCRETE	on a Polyester resin basis, with mineral fillers, additives
COMPRESSIVE STRENGTH	≥ 90 N/mm ²
BENDING STRENGTH	≥ 22 N/mm ²
ELASTICITY MODULE	25,000 – 35,000 N/mm ²
DENSITY	2,1 – 2,3 kg/dm ³
COEFFICIENT OF LINEAR EXPANSION	Approx. 1.45 x 10 ⁻⁵ 1/K
HEAT RESISTANCE	100°C continuous load, up to 200°C with a load duration up to 5 min.
FROST RESISTANCE	- 50°C
WATER PENETRATION LEVEL	0 mm
WATER ABSORPTION	< 0,05% DIN 52 103 (A)
MATERIAL STRUCTURE	Capillary free

CORROSION PROTECTION	Stainless steels form a dense chromium oxide layer (passive layer) under the influence of oxygen to protect against corrosion. Contamination by environmental influences, such as rust film, Sulphur dioxides, soot particles, road salt, table salt, chloride-containing aqueous liquids, can lead to permanent damage of the protective layer.
CLEANING	It is therefore imperative to clean stainless steel products regularly. Under no circumstances should normally steel wool or steel brushes be used for cleaning, as abrasion can cause extraneous rust to form. We recommend cleaning with steam cleaners and/or steel-free brushes, using suitable (hydrochloric acid-free) stainless steel cleaners.

MEAKERB BRIDGE 200

A 15, B 125, C 250, D 400 Nominal width 200

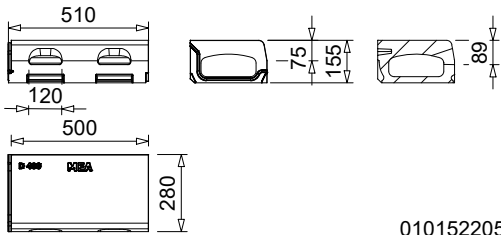


BUILDING SUCCESS

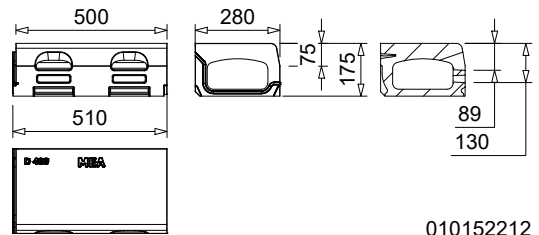
MEAKERB BRIDGE 200 BRIDGE DRAINAGE

MONOLITHIC POLYMER CONCRETE CHANNELS WITH EPDM SEALINGS

Kerb channels for linear bridge drainage in accordance with BAST and ZTV-ING guidelines. For installation in the bridge deck. Clear width of the channel body 200 mm, total width 280 mm. Loading class D 400 according to EN 1433. Load capacity according to specification when installed according to the MEA installation instructions.



010152205

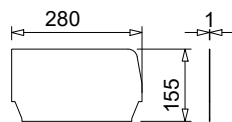


010152212

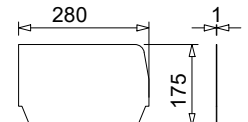
MEAKERB BRIDGE 200-75 Kerb channel, 75 mm height, flow cross-section 107 cm², flow cross-section OPA 147 cm² with reinforcement preformed on the rear side

Description	Inlet sect. area \emptyset cm ² /m laterally	Length (mm)	Height (mm)	EAN-Code	kg/unit
MEAKERB BRIDGE 200-75 kerb channel incl. butt joint seal	208	500	155	010152205	28,50
MEAKERB BRIDGE 200-75 kerb channel OPA for porous asphalt incl. butt joint seal	296	500	175	010152212	30,00

ACCESSORIES FOR MEAKERB BRIDGE 200



010152220



010152222

MEAKERB BRIDGE 200 End caps

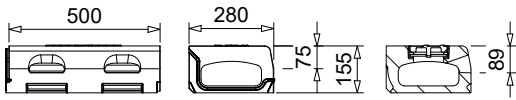
Description	Material	Width (mm)	Height (mm)	EAN-Code	kg/unit
MEAKERB BRIDGE 200.SE end cap made of stainl. steel (AISI 316) for channel start/end	Stainl. steel (AISI 316)	280	155	010152220	0,30
MEAKERB BRIDGE 200.SE OPA end cap made of stainl. steel (AISI 316) for channel start/end	Stainl. steel (AISI 316)	280	175	010152222	0,40

MEAKERB BRIDGE 200

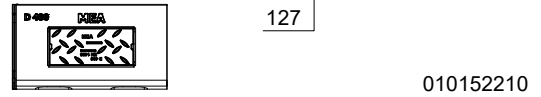
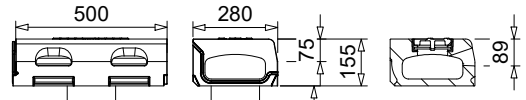
A 15, B 125, C 250, D 400 Nominal width 200



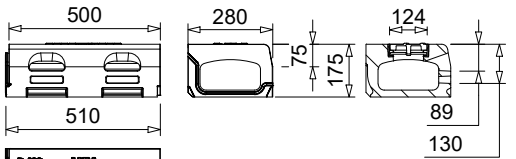
BUILDING SUCCESS



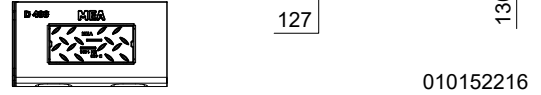
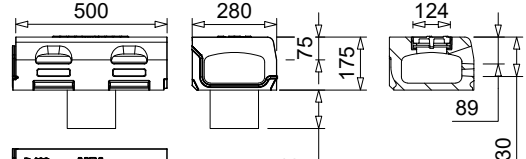
010152207



010152210



010152214



010152216

MEAKERB BRIDGE 200-75 Inspection elements, scraper flange height 75 mm, flow cross-section 107 cm², flow cross-section OPA 147 cm² with reinforcement preformed on the rear side

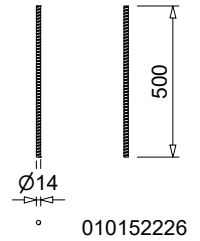
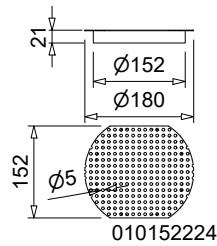
Description	Inlet sect. area Ø cm ² /m laterally	Length (mm)	Height (mm)	EAN-Code	kg/unit
MEAKERB BRIDGE 200-75 kerb channel with inspection opening, incl. closed cover and impact seal	208	500	155	010152207	25,70
MEAKERB BRIDGE 200-75 kerb channel with inspection opening, incl. closed cover and impact seal with vertical socket Ø 160 mm AISI 316 (stainless steel 1.4571)	208	500	155	010152210	25,70
MEAKERB BRIDGE 200-75-kerb channel with inspection opening, incl. closed cover and impact seal with two backside horizontal sockets Ø 75 mm AISI 316 (stainless steel 1.4571)	175	500	155	010152245	25,70
MEAKERB BRIDGE 200-75 kerb channel OPA with inspection opening for porous asphalt, incl. closed cover and impact seal	296	500	175	010152214	29,60
MEAKERB BRIDGE 200-75 kerb channel OPA with inspection opening for porous asphalt, incl. closed cover and impact seal, with vertical socket Ø 160 mm AISI 316, stainless steel 1.4571	296	500	175	010152216	30,30
MEAKERB BRIDGE 200-75 kerb channel OPA with inspection opening for porous asphalt, incl. closed cover and impact seal with two backside horizontal sockets Ø 75 mm AISI 316 (stainless steel 1.4571)	296	500	175	010152257	30,30

MEAKERB BRIDGE 200

A 15, B 125, C 250, D 400 Nominal width 200



BUILDING SUCCESS



MEAKERB BRIDGE Accessories

Description	Material	EAN-Code	kg/unit
MEAKERB BRIDGE Dirt grille in stainl. steel (AISI 316) for drain outlets Ø 160 mm	Stainl. steel (AISI 316)	010152224	0,30
MEAKERB BRIDGE Anchor rods made of glass fiber reinforced plastic M12, 0.5 m long, for gluing into the back of the MEAKERB BRIDGE Hollow kerb channels	GRP	010152226	0,14
MEA ResiFix PY composite mortar (styrene-free) 165 ml cartridge + 2 mixing outlets	Polyester resin 2-component	010504205	0,35
MEA ResiFix PY composite mortar (styrene-free), 410 ml cartridge 1 mixing nozzle for polymer concrete repair and bonding of MEAKERB BRIDGE reinforcing bars into the back preforms of the channels.	Polyester resin 2-component	010504202	0,83
Dispensing gun for ResiFixPY 410 SF; 410 ml	-	010504204	1,10
For installation with mastic asphalt: MEA pressed gasket flange drain. Floor/ceiling drain stainless steel, outer Ø 274 mm, incl. mortar barrier. Connector for vertical outlet Ø 160 mm.	Stainl. steel (AISI 316)	010152228	7,70