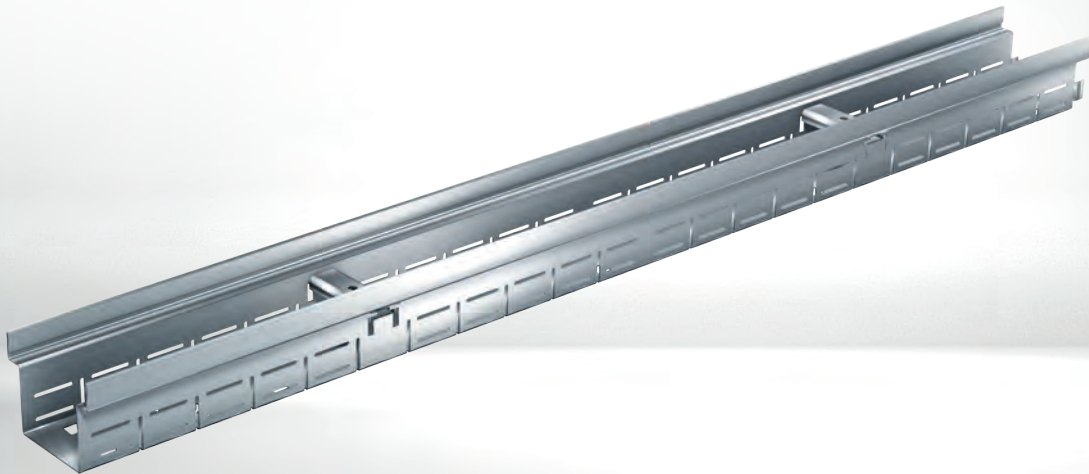


NEW

MEATEC II

100/130/160/200/250



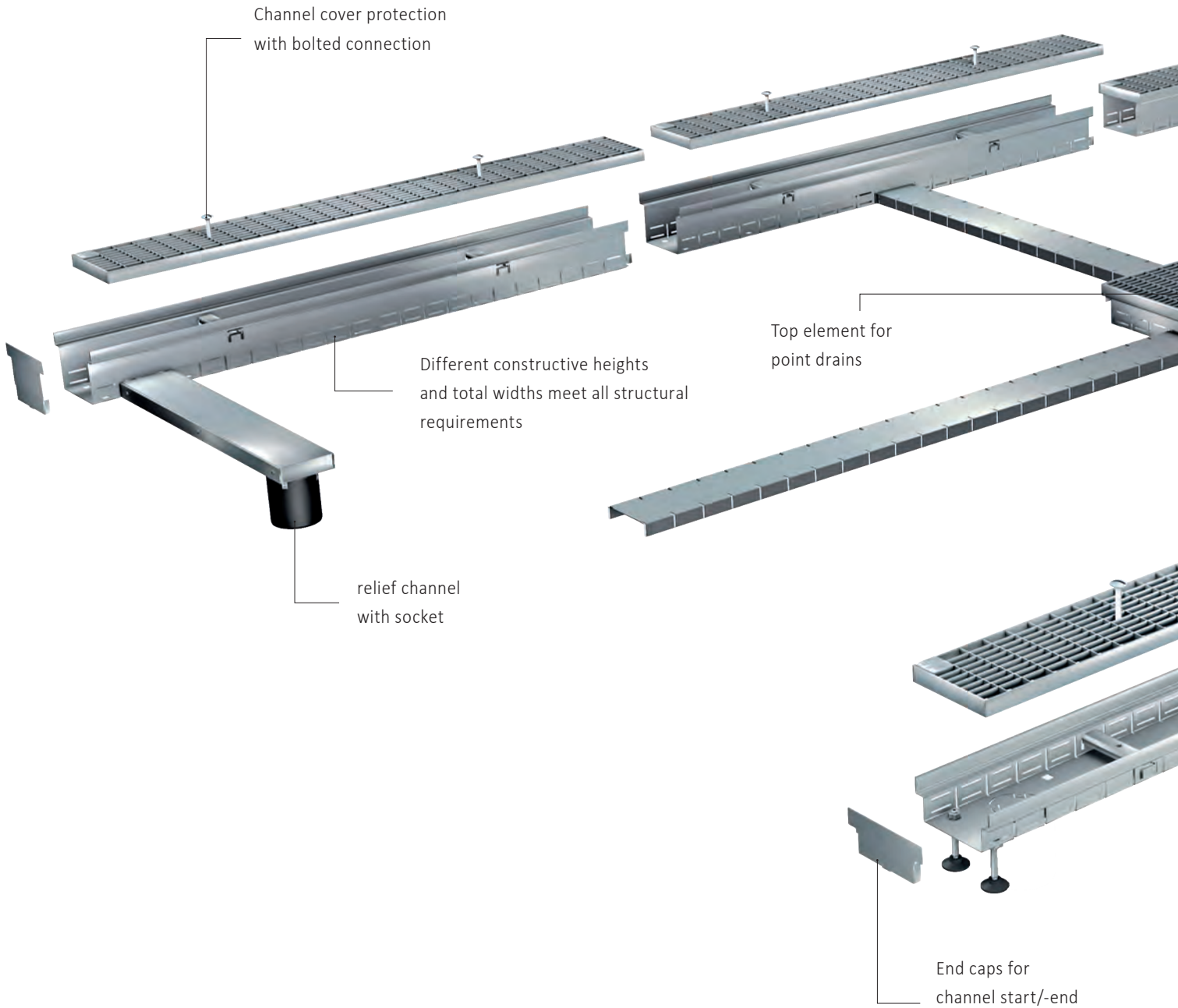
DRAINAGE SYSTEM FOR TERRACES, ROOF GARDENS AND BALCONIES

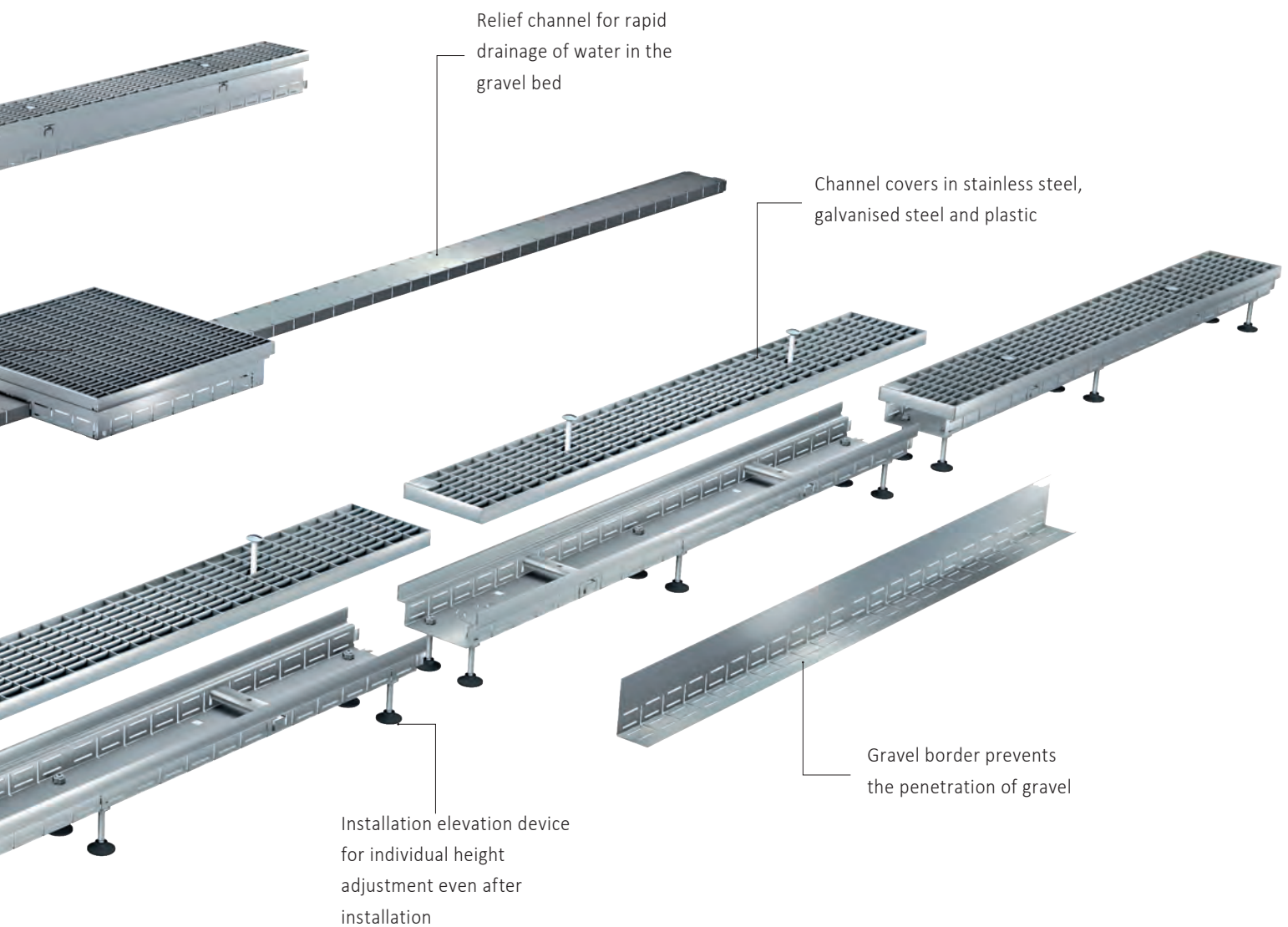
COMPLETE DRAINAGE SYSTEM MADE OF GALVANISED STEEL OR STAINLESS STEEL

MEATEC II SYSTEM OVERVIEW

Drainage on façades, roof gardens, balconies and terraces is an integral part of building and landscape design, influencing not only the functionality but also the aesthetics of buildings.

Careful planning and implementation help to preserve the valuable building substance. MEA offers perfectly matched drainage systems in various nominal widths, made entirely of galvanised steel or stainless steel.

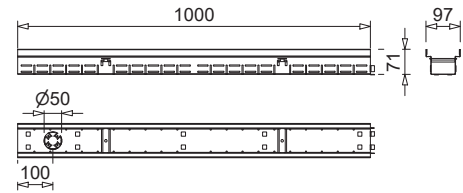




Advantages

- > Drainage system in three different heights, optionally with height-adjustable supports
- > Can be cut to length individually, without loss of function, even after installation
- > Easy installation with MEATEC II plug-in system
- > Integrated gravel border
- > Stable design due to standard channel reinforcement
- > Resistant to lateral pressure
- > Enables barrier-free construction methods according to DIN 18040-1 and -2 (Part 1 and 2)
- > Versatile design covers

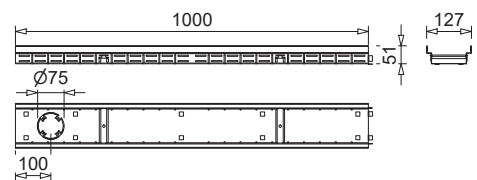
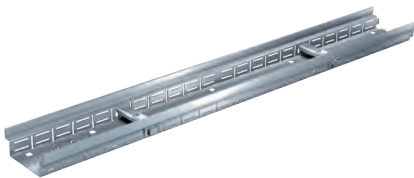
MEATEC II 100/130 MADE OF GALVANISED STEEL (V) OR STAINLESS STEEL (E) FIXED CONSTRUCTIVE HEIGHT / OPTIONAL VARIABLE HEIGHTS WITH INSTALLATION ELEVATION DEVICE



010730992

NEW MEATEC II 100 drainage channel bodies

Article	Material	Length (mm)	Height (mm)	EAN-Code	kg/unit	unit/pallet	MG
MEATEC II V100-F50 Drainage channel-2 m	Galv. steel	2000	50	010730986	3,40	1	TC
MEATEC II V100-F50 Drainage channel-1 m	Galv. steel	1000	50	010730988	1,70	1	TC
MEATEC II V100-F70 Drainage channel-2 m	Galv. steel	2000	70	010730990	4,20	1	TC
MEATEC II V100-F70 Drainage channel-1 m	Galv. steel	1000	70	010730992	2,10	1	TC
MEATEC II V100-F90 Drainage channel-2 m	Galv. steel	2000	90	010730994	2,10	1	TC
MEATEC II V100-F90 Drainage channel-1 m	Galv. steel	1000	90	010730996	2,40	1	TC
MEATEC II E100-F50 Drainage channel-2 m *)	Stainl. steel	2000	50	010730998	3,40	1	TC
MEATEC II E100-F50 Drainage channel-1 m *)	Stainl. steel	1000	50	010731000	1,70	1	TC
MEATEC II E100-F70 Drainage channel-2 m *)	Stainl. steel	2000	70	010731002	4,20	1	TC
MEATEC II E100-F70 Drainage channel-1 m *)	Stainl. steel	1000	70	010731004	2,10	1	TC
MEATEC II E100-F90 Drainage channel-2 m *)	Stainl. steel	2000	90	010731006	4,80	1	TC
MEATEC II E100-F90 Drainage channel-1 m *)	Stainl. steel	1000	90	010731008	2,40	1	TC



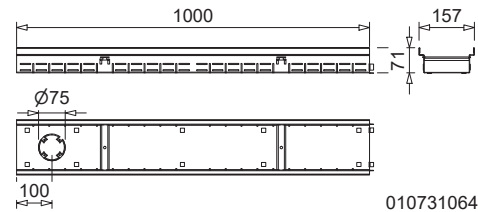
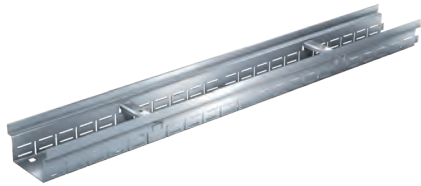
010731024

NEW MEATEC II 130 drainage channel bodies

Article	Material	Length (mm)	Height (mm)	EAN-Code	kg/unit	unit/pallet	MG
MEATEC II V130-F50 Drainage channel-2 m	Galv. steel	2000	50	010731022	4,00	1	TC
MEATEC II V130-F50 Drainage channel-1 m	Galv. steel	1000	50	010731024	2,00	1	TC
MEATEC II V130-F70 Drainage channel-2 m	Galv. steel	2000	70	010731026	4,60	1	TC
MEATEC II V130-F70 Drainage channel-1 m	Galv. steel	1000	70	010731028	2,30	1	TC
MEATEC II V130-F90 Drainage channel-2 m	Galv. steel	2000	90	010731030	5,20	1	TC
MEATEC II V130-F90 Drainage channel-1 m	Galv. steel	1000	90	010731032	2,60	1	TC
MEATEC II E130-F50 Drainage channel-2 m *)	Stainl. steel	2000	50	010731034	4,00	1	TC
MEATEC II E130-F50 Drainage channel-1 m *)	Stainl. steel	1000	50	010731036	2,00	1	TC
MEATEC II E130-F70 Drainage channel-2 m *)	Stainl. steel	2000	70	010731038	4,60	1	TC
MEATEC II E130-F70 Drainage channel-1 m *)	Stainl. steel	1000	70	010731040	2,30	1	TC
MEATEC II E130-F90 Drainage channel-2 m *)	Stainl. steel	2000	90	010731042	5,20	1	TC
MEATEC II E130-F90 Drainage channel-1 m *)	Stainl. steel	1000	90	010731044	2,60	1	TC

> **NOTE:** *Delivery time on request.

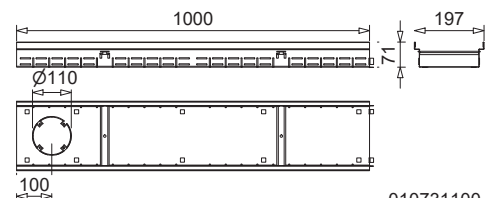
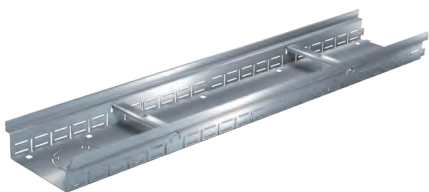
MEATEC II 160/200 MADE OF GALVANISED STEEL (V) OR STAINLESS STEEL (E) FIXED CONSTRUCTIVE HEIGHT / OPTIONAL VARIABLE HEIGHTS WITH INSTALLATION ELEVATION DEVICE



010731064

NEW MEATEC II 160 drainage channel bodies

Article	Material	Length (mm)	Height (mm)	EAN-Code	kg/unit	unit/pallet	MG
MEATEC II V160-F50 Drainage channel-2 m	Galv. steel	2000	50	010731058	4,60	1	TC
MEATEC II V160-F50 Drainage channel-1 m	Galv. steel	1000	50	010731060	2,30	1	TC
MEATEC II V160-F70 Drainage channel-2 m	Galv. steel	2000	70	010731062	5,11	1	TC
MEATEC II V160-F70 Drainage channel-1 m	Galv. steel	1000	70	010731064	2,60	1	TC
MEATEC II V160-F90 Drainage channel-2 m	Galv. steel	2000	90	010731066	5,80	1	TC
MEATEC II V160-F90 Drainage channel-1 m	Galv. steel	1000	90	010731068	2,90	1	TC
MEATEC II E160-F50 Drainage channel-2 m *)	Stainl. steel	2000	50	010731070	4,60	1	TC
MEATEC II E160-F50 Drainage channel-1 m *)	Stainl. steel	1000	50	010731072	2,30	1	TC
MEATEC II E160-F70 Drainage channel-2 m *)	Stainl. steel	2000	70	010731074	3,20	1	TC
MEATEC II E160-F70 Drainage channel-1 m *)	Stainl. steel	1000	70	010731076	2,60	1	TC
MEATEC II E160-F90 Drainage channel-2 m *)	Stainl. steel	2000	90	010731078	5,80	1	TC
MEATEC II E160-F90 Drainage channel-1 m *)	Stainl. steel	1000	90	010731080	2,90	1	TC



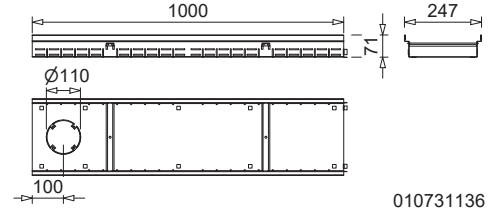
010731100

NEW MEATEC II 200 drainage channel bodies

Article	Material	Length (mm)	Height (mm)	EAN-Code	kg/unit	unit/pallet	MG
MEATEC II V200-F50 Drainage channel-2 m	Galv. steel	2000	50	010731094	5,20	1	TC
MEATEC II V200-F50 Drainage channel-1 m	Galv. steel	1000	50	010731096	2,60	1	TC
MEATEC II V200-F70 Drainage channel-2 m	Galv. steel	2000	70	010731098	6,00	1	TC
MEATEC II V200-F70 Drainage channel-1 m	Galv. steel	1000	70	010731100	3,00	1	TC
MEATEC II V200-F90 Drainage channel-2 m	Galv. steel	2000	90	010731102	6,60	1	TC
MEATEC II V200-F90 Drainage channel-1 m	Galv. steel	1000	90	010731104	3,30	1	TC
MEATEC II E200-F50 Drainage channel-2 m *)	Stainl. steel	2000	50	010731106	5,20	1	TC
MEATEC II E200-F50 Drainage channel-1 m *)	Stainl. steel	1000	50	010731108	2,60	1	TC
MEATEC II E200-F70 Drainage channel-2 m *)	Stainl. steel	2000	70	010731110	6,00	1	TC
MEATEC II E200-F70 Drainage channel-1 m *)	Stainl. steel	1000	70	010731112	3,00	1	TC
MEATEC II E200-F90 Drainage channel-2 m *)	Stainl. steel	2000	90	010731114	6,60	1	TC
MEATEC II E200-F90 Drainage channel-1 m *)	Stainl. steel	1000	90	010731116	3,30	1	TC

> **NOTE:** *Delivery time on request.

MEATEC II 250 MADE OF GALVANISED STEEL (V) OR STAINLESS STEEL (E) FIXED CONSTRUCTIVE HEIGHT / OPTIONAL VARIABLE HEIGHTS WITH INSTALLATION ELEVATION DEVICE



010731136

NEW MEATEC II 250 drainage channel bodies

Article	Material	Length (mm)	Height (mm)	EAN-Code	kg/unit	unit/pallet	MG
MEATEC II V250-F50 Drainage channel-2 m	Galv. steel	2000	50	010731130	6,20	1	TC
MEATEC II V250-F50 Drainage channel-1 m	Galv. steel	1000	50	010731132	2,90	1	TC
MEATEC II V250-F70 Drainage channel-2 m	Galv. steel	2000	70	010731134	6,80	1	TC
MEATEC II V250-F70 Drainage channel-1 m	Galv. steel	1000	70	010731136	3,40	1	TC
MEATEC II V250-F90 Drainage channel-2 m	Galv. steel	2000	90	010731138	7,17	1	TC
MEATEC II V250-F90 Drainage channel-1 m	Galv. steel	1000	90	010731140	2,52	1	TC
MEATEC II E250-F50 Drainage channel-2 m *)	Stainl. steel	2000	50	010731142	6,20	1	TC
MEATEC II E250-F50 Drainage channel-1 m *)	Stainl. steel	1000	50	010731144	3,10	1	TC
MEATEC II E250-F70 Drainage channel-2 m *)	Stainl. steel	2000	70	010731146	6,80	1	TC
MEATEC II E250-F70 Drainage channel-1 m *)	Stainl. steel	1000	70	010731148	3,40	1	TC
MEATEC II E250-F90 Drainage channel-2 m *)	Stainl. steel	2000	90	010731150	7,40	1	TC
MEATEC II E250-F90 Drainage channel-1 m *)	Stainl. steel	1000	90	010731152	3,70	1	TC

> **NOTE:** *Delivery time on request.

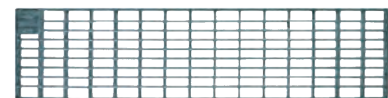
MEATEC II Channel covers



Plastic longitudinal bar grating grey,
heelguard, width: 130 mm



Plastic longitudinal bar grating black,
heelguard, width: 130 mm



Mesh grating 20/30, galvanised steel,
stainless steel,
widths: 100/130/160/200/250 mm



NEW MEA PRIME channel cover,
stainless steel widths: 130/160 mm



Dotted grating, stainless steel,
width: 130 mm