

MEAKERB BRIDGE CHANNEL**MATERIAL CHARACTERISTICS**

DRAINAGE CHANNEL AND COMPONENTS	
POLYMER CONCRETE	on a Polyester resin basis, with mineral fillers, additives
COMPRESSION RESISTANCE	≥ 90 N/mm ²
FLEXURAL TENSILE STRENGTH	≥ 22 N/mm ²
MODULES OF ELASTICITY	25.000 – 35.000 N/mm ²
DENSITY	2,1 – 2,3 kg/dm ³
LINEAR EXPANSION COEFFICIENT	approx. 1,45 x 10 ⁻⁵ 1/K
HEAT RESISTANCE	100°C permanent exposure, short-term exposure (5 min.) to 200°C
FROST RESISTANCE	- 50°C
WATER PENETRATION LEVEL	0 mm
WATER ABSORPTION	< 0,05% DIN 52 103 (A)
MATERIAL STRUCTURE	capillary free

Stainless steels form a dense chromium oxide layer (passive layer) under the influence of oxygen to protect against corrosion. Contamination by environmental influences, such as rust film, Sulphur dioxides, soot particles, road salt, table salt, chloride-containing aqueous liquids, can lead to permanent damage of the protective layer.

It is therefore imperative to clean stainless steel products regularly. Under no circumstances should normally steel wool or steel brushes be used for cleaning, as abrasion can cause extraneous rust to form.

We recommend cleaning with steam cleaners and/or steel-free brushes, using suitable (hydrochloric acid-free) stainless steel cleaners.

PURPOSE OF USE

Component for the line drainage of surfaces in order to collect, transport and discharge rainwater from adjacent fixed surfaces.

MEAKERB BRIDGE 200

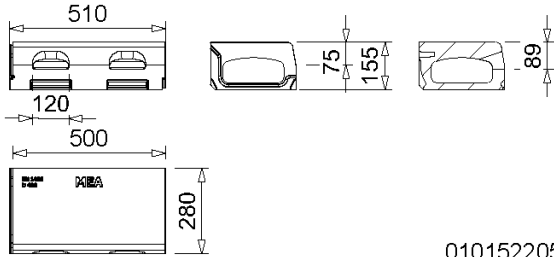
A 15, B 125, C 250, D 400

CW 200

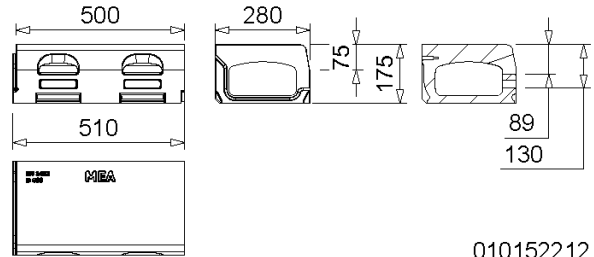
BUILDING SUCCESS

MEAKERB BRIDGE 200 BRIDGE DRAINAGE MONOLITHIC POLYMER CONCRETE CHANNELS WITH EPDM SEALINGS

Kerb channels for linear bridge drainage in accordance with BAST and ZTV-ING guidelines. For installation in the bridge deck. Clear width of the channel body 200 mm, total width 280 mm. Loading class D 400 according to EN 1433. Load capacity according to specification when installed according to the MEA installation instructions.



010152205

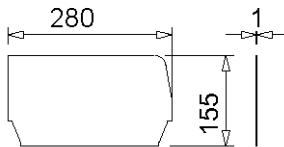


010152212

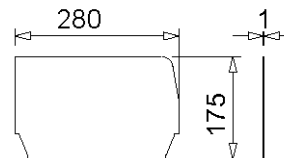
MEAKERB BRIDGE 200-75 KERB CHANNEL, 75 MM HEIGHT, FLOW CROSS SECTION 107 CM² /OPA 147 CM² WITH REINFORCEMENT PREFORMED ON THE REAR SIDE

Designation	Ord. No.	Length [mm]	Height [mm]	Inlet Ø cm ² /m lateral	kg/unit
MEAKERB BRIDGE 200-75 kerb channel incl. butt joint seal	010152205	500	155	208	28,50
MEAKERB BRIDGE 200-75 kerb channel OPA for porous asphalt incl. butt joint seal	010152212	500	175	296	30,00

ACCESSORIES FOR MEAKERB BRIDGE 200



010152220



010152222

MEAKERB END CAPS

Designation	Ord. No.	Material	Height [mm]	kg/unit
MEAKERB BRIDGE 200.SE end cap made of stainl. steel (AISI 316) for channel start/end	010152220	Stainl. steel (AISI 316)	155	0,30
MEAKERB BRIDGE 200.SE OPA end cap made of stainl. steel (AISI 316) for channel start/end	010152222	Stainl. steel (AISI 316)	175	0,40

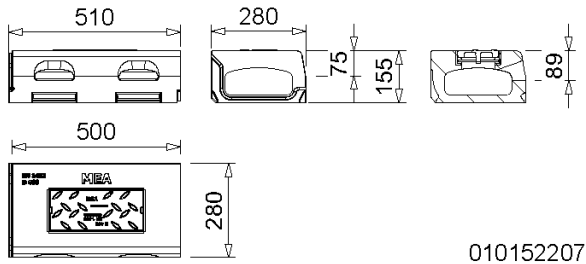
MEAKERB BRIDGE 200

A 15, B 125, C 250, D 400

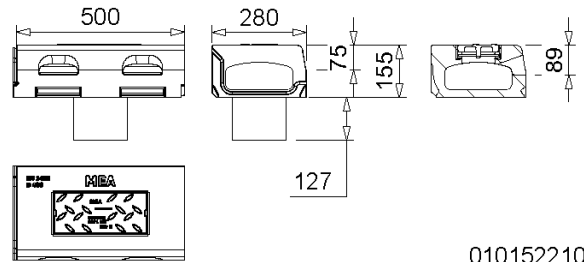
CW 200



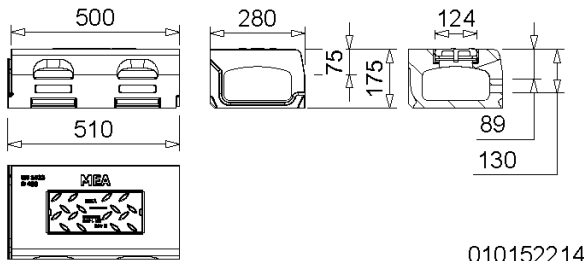
BUILDING SUCCESS



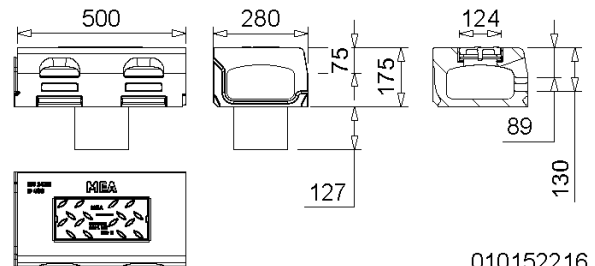
010152207



010152210



010152214



010152216

MEAKERB BRIDGE 200-75 INSPECTION ELEMENTS, SCRAPER FLANGE HEIGHT 75 MM, FLOW CROSS-SECTION 107 CM² /OPA 147 CM² WITH REINFORCEMENT PREFORMED ON THE REAR SIDE

Designation	Ord. No.	Length [mm]	Height [mm]	Inlet Ø cm ² /m lateral	kg/unit
MEAKERB BRIDGE 200-75 kerb channel with inspection opening incl. closed cover and butt seal	010152207	500	155	208	25,70
MEAKERB BRIDGE 200-75 kerb channel with inspection opening, incl. closed cover and impact seal with vertical socket Ø 160 mm stainl. Steel (AISI 316), stainless steel 1.4571	010152210	500	155	208	25,70
MEAKERB BRIDGE 200-75 kerb channel OPA with inspection opening for porous asphalt, incl. closed cover and butt joint seal	010152214	500	175	296	29,60
MEAKERB BRIDGE 200-75 kerb channel OPA for porous asphalt with inspection opening, incl. closed cover and impact seal, with vertical socket Ø 160 mm AISI 316, stainless steel 1.4571	010152216	500	175	296	30,30

MEAKERB BRIDGE 200

A 15, B 125, C 250, D 400

CW 200



BUILDING SUCCESS



MEAKERB BRIDGE ACCESSORIES

Designation	Ord. No.	Material	kg/unit
MEAKERB BRIDGE Dirt grille in stainl. steel (AISI 316) for drain outlets \varnothing 160 mm	010152224	Stainl. steel (AISI 316)	0,30
MEAKERB BRIDGE reinforcement bars M12, 0.5 m long, for gluing into the back of MEAKERB BRIDGE 200 kerb channel	010152226	GRP	0,14
MEA ResiFix PY composite mortar (styrene-free) 165 ml cartridge + 2 mixing outlets *)	010504205	Polyester resin 2-component	0,35
For installation with mastic asphalt: MEA pressed gasket flange drain. Floor/ceiling drain stainless steel, outer \varnothing 274 mm, incl. mortar barrier. Connector for vertical outlet \varnothing 160 mm.	010152228	Stainl. steel (AISI 316)	7,70

*) Delivery time upon request.

This edition of the technical data sheet is valid from February 2024 until the publication of a revised version and replaces earlier publications. The current version is available for download at www.mea-group.com

MEA Bautechnik GmbH
 Business unit Water Management
 Sudetenstraße 1
 86551 Aichach
 Tel.: +49 (0) 82 51. 91 0
 Fax: +49 (0) 82 51. 91 13 06
 E-Mail: info@mea-group.com
www.mea-group.com