

MATERIAL CHARACTERISTICS

GALVANISED STEEL	strip galvanized sheet metal EN 10142 DX51-Z275
STAINLESS STEEL	stainless steel 1.4301 (V2A)

PURPOSE OF USE

Components to protect buildings from penetrating moisture in sensitive door and facade areas on terraces, roof gardens, balconies and other open spaces, in accordance with the Flat Roof Directive, DIN 18195 and DIN 18040, Parts 1 and 2.

DESIGN

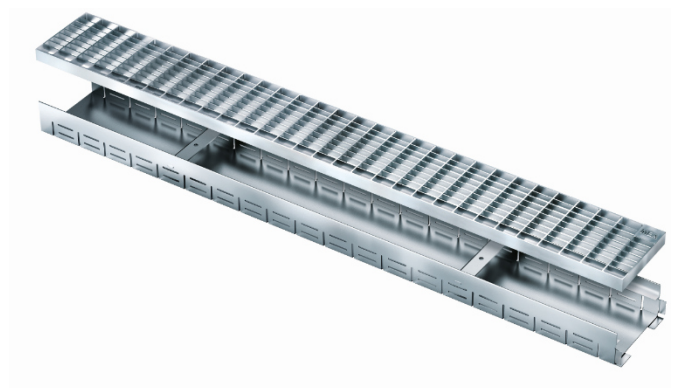
- / Lengths 500, 1000 and 2000 mm
- / Length 1000 mm including drain socket
- / Fixed constructive heights 55, 70, 90 and 100 mm

PRODUCT INFORMATION

- / Drainage system with slots on both sides (integrated gravel border), no loose parts.
- / Height adjustable, even after the installation, thus exact height adjustment to the pavement level, even when the gravel bed is lowered later.
- / Easy installation through a channel plug-in system.
- / increased rear ventilation on the wall side - fast drying of waterlogging
- / increased drainage performance, according to DIN EN 12056-3 and DIN 1986-100, through an intelligent slot geometry
- / optimized stub channel connection
- / Stub channels with plug-in system for an easy installation
- / Stable design through a standardized lateral channel stiffening
- / Installation according to the flat roof directive and DIN 18195-5
- / Implementation of barrier-free entry points, also through a single-side height adjustment.
- / Comprehensive standard grates and design grates range

ACCESSORIES

- / Attachment elements with variable constructive height 55-90 as a cover for point discharges
- / Attachment elements with variable constructive height 90-150 as a cover for point discharges
- / Stub channels as drainage under the surface coverings
- / End cap in fixed heights 55, 70, 90, 100
- / Protection screws



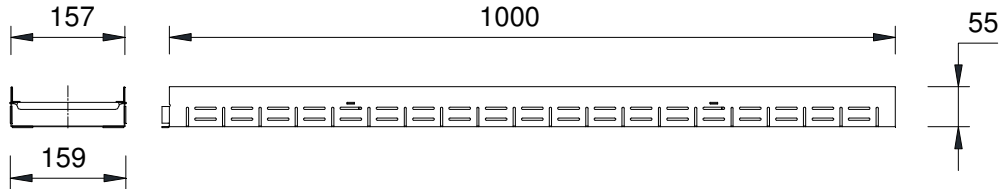
MEATEC V and E 160

can be walked on und travelled by wheelchair

nominal width 160

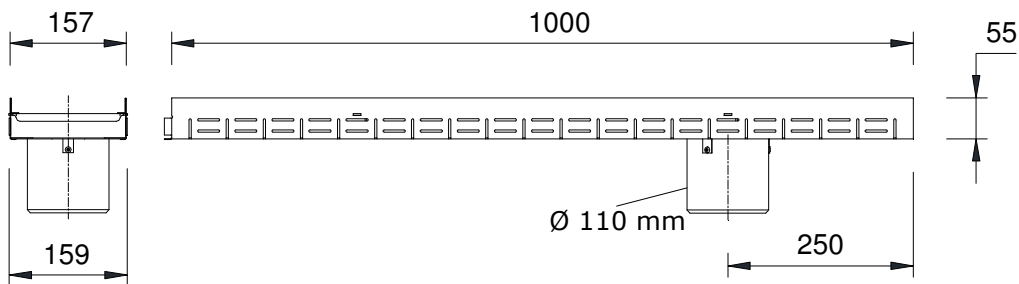
DRAINAGE FOR TERRACES AND FACADES MADE OF GALVANIZED STEEL OR STAINLESS STEEL, FIXED CONSTRUCTIVE HEIGHTS

Drainage system made of galvanized steel or stainless steel, with slots on both sides (integrated gravel border). For the installation according to the flat roof directive and DIN 18195. Can be walked on and travelled by wheelchair.



MEATEC 160 DRAINAGE CHANNEL BODY, FIXED HEIGHTS, GALVANISED AND STAINLESS STEEL

Designation galvanized steel	Order No. galvanized 010...	Designation stainless steel	Order No. Stainless steel 010...	Length in mm	Constructive height in mm	kg per item
MEATEC V 160-F55	730256	MEATEC E 160-F55	730266	2000	55	5.10
MEATEC V 160-F55	730258	MEATEC E 160-F55	730268	1000	55	2.60
MEATEC V 160-F55	730262	MEATEC E 160-F55	730272	500	55	1.30
MEATEC V 160-F70	730276	MEATEC E 160-F70	730286	2000	70	5.60
MEATEC V 160-F70	730278	MEATEC E 160-F70	730288	1000	70	2.80
MEATEC V 160-F70	730282	MEATEC E 160-F70	730292	500	70	1.40
MEATEC V 160-F90	730296	MEATEC E 160-F90	730470	2000	90	6.20
MEATEC V 160-F90	730298	MEATEC E 160-F90	730472	1000	90	3.10
MEATEC V 160-F90	730466	MEATEC E 160-F90	730476	500	90	1.60
MEATEC V 160-F100	730480	MEATEC E 160-F100	730490	2000	100	6.60
MEATEC V 160-F100	730482	MEATEC E 160-F100	730492	1000	100	3.30
MEATEC V 160-F100	730486	MEATEC E 160-F100	730496	500	100	1.65



MEATEC 160 DRAINAGE CHANNEL BODY WITH VERTICAL DRAIN Ø 110 MM, FIXED HEIGHTS, GALVANISED AND STAINLESS STEEL

Designation galvanized steel	Order No. galvanized 010...	Designation stainless steel	Order No. Stainless steel 010...	Length in mm	Constructive height in mm	kg per item
MEATEC V 160-F55/A	730260	MEATEC E 160-F55/A	730270	1000	55	2.80
MEATEC V 160-F70/A	730280	MEATEC E 160-F70/A	730290	1000	70	3.00
MEATEC V 160-F90/A	730300	MEATEC E 160-F90/A	730474	1000	90	3.30
MEATEC V 160-F100/A	730484	MEATEC E 160-F100/A	730494	1000	100	3.50

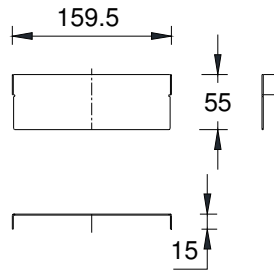
MEATEC V and E 160

can be walked on und travelled by wheelchair

nominal width 160



BUILDING SUCCESS



MEATEC 160-F55.SE

MEATEC 160 END CAPS, FIXED HEIGHTS, GALVANISED AND STAINLESS STEEL

Designation galvanized steel	Order No. galvanized 010...	Designation stainless steel	Order No. Stainless steel 010...	Constructive height in mm	kg per item
MEATEC V 160-F55.SE End cap	730264	MEATEC E 160-F55.SE End cap	730274	55	0.09
MEATEC V 160-F70.SE End cap	730284	MEATEC E 160-F70.SE End cap	730294	70	0.11
MEATEC V 160-F90.SE End cap	730468	MEATEC E 160-F90.SE End cap	730478	90	0.14
MEATEC V 160-F100.SE End cap	730488	MEATEC E 160-F100.SE End cap	730498	100	0.14

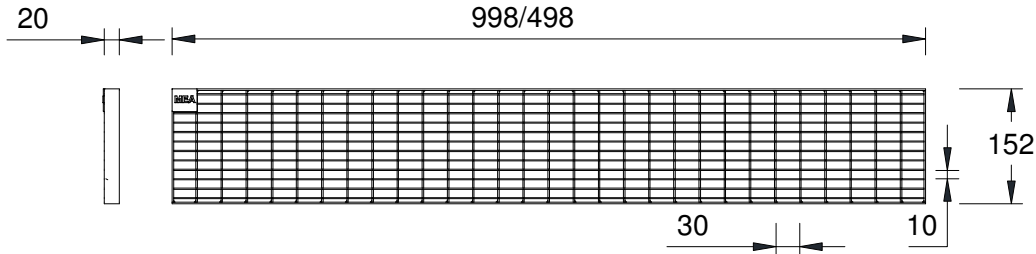
MEATEC V and E 160

can be walked on und travelled by wheelchair

nominal width 160

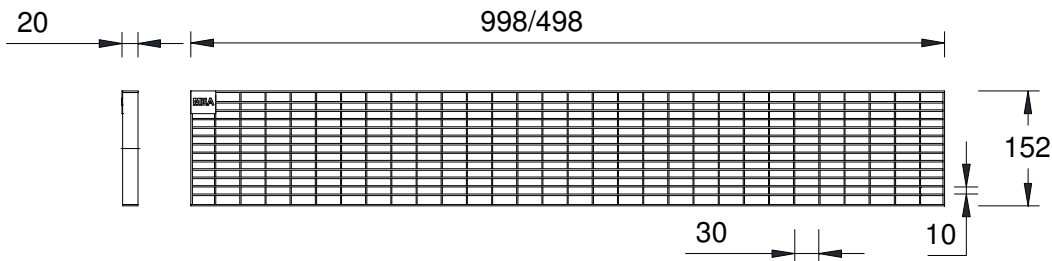
MEATEC STANDARD GRATES, GALVANIZED STEEL OR STAINLESS STEEL

Suitable for MEATEC 160 constructive width 152 mm, can be walked on and wheelchair accessible; protection optional.



MEATEC 160 MESH GRATING 30/10, GALVANIZED AND STAINLESS STEEL, CAN BE WALKED ON AND TRAVELLED BY WHEELCHAIR

Designation galvanized steel	Order No. galvanized 010...	Designation stainless steel	Order No. Stainless steel 010...	Length in mm	In-feed Ø cm ² /m	kg per Item
MEATEC V 160 Mesh grating 30/10	730756	MEATEC E 160 Mesh grating 30/10	730764	1000	1080	3.50
MEATEC V 160 Mesh grating 30/10	730758	MEATEC E 160 Mesh grating 30/10	730766	500	1080	1.75



MEATEC 160 LONGITUDINAL BAR GRATING, GALVANIZED AND STAINLESS STEEL, CAN BE WALKED ON AND TRAVELLED BY WHEELCHAIR

Designation galvanized steel	Order No. galvanized 010...	Designation stainless steel	Order No. Stainless steel 010...	Length in mm	In-feed Ø cm ² /m	kg per Item
MEATEC V 160 Longitudinal bar grating	730760	MEATEC E 160 Longitudinal bar grating	730768	1000	1164	5.30
MEATEC V 160 Longitudinal bar grating	730762	MEATEC E 160 Longitudinal bar grating	730770	500	1164	2.65

MEATEC GRATING PROTECTION SCREW

Description	Order No. 010....	Material	kg per piece
MEATEC grating protection screw V2A	730796	Stainless steel	0.02

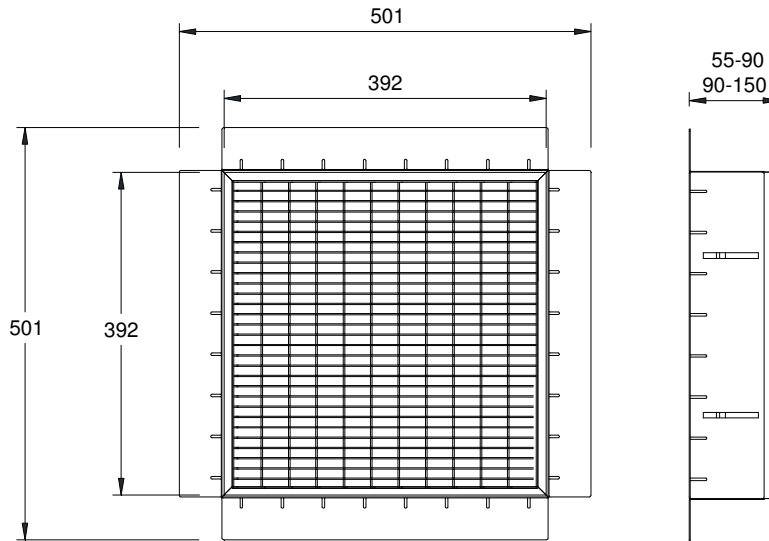
MEATEC V and E 160

can be walked on und travelled by wheelchair

nominal width 160

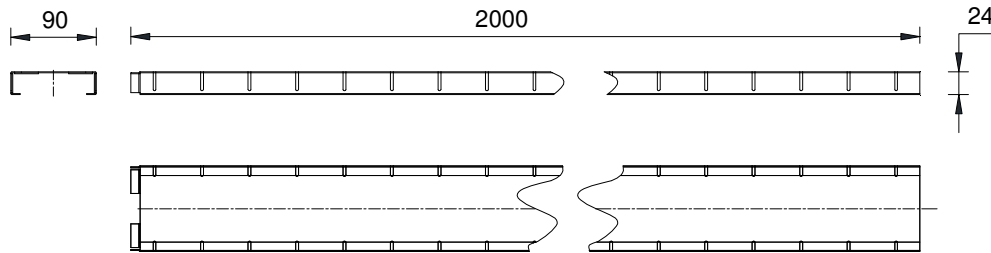


BUILDING SUCCESS



MEATEC ATTACHMENT ELEMENTS HEIGHT ADJUSTABLE 400 X 400, GALVANIZED AND STAINLESS STEEL

Designation galvanized steel	Order No. galvanized 010...	Designation stainless steel	Order No. Stainless steel 010...	Length in mm	Constructive height in mm	kg per Item
MEATEC V 400x400 attachment L + grate 30/10	730182	MEATEC V 400x400 attachment L + grate 30/10	730186	400	55-90	6.00
MEATEC V 400x400 attachment H + grate 30/10	730184	MEATEC V 400x400 attachment H + grate 30/10	730188	400	90-150	6.00



MEATEC STUB CHANNEL, GALVANIZED UND STAINLESS STEEL

Designation galvanized steel	Order No. galvanized 010...	Designation stainless steel	Order No. Stainless steel 010...	Length in mm	Constructive height in mm	kg per Item
MEATEC V 90/24 stub channel	730328	MEATEC E 90/24 stub channel	730330	2000	24	4.40

This edition of the technical data sheet shall be valid from December 2017 until a revised version is published, and replaces any previous publications. The respectively current version is available for download at www.mea-group.com.

MEGA Bautechnik GmbH
 Business Unit MEGA Water Management
 Sudetenstraße 1
 86551 Aichach
 Tel.: +49 (0) 82 51. 91 0
 Fax: +49 (0) 82 51. 91 13 06
 E-Mail: info@mea-group.com
www.mea-group.com