

# LIGHT WELL MEAMULTINORM 3-IN-1

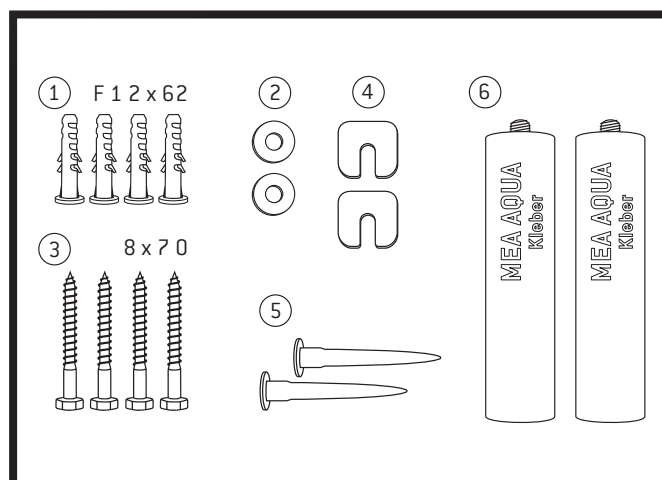
## FOR FIXING SET MEA AQUA (MOUNTING WITHOUT INSULATION)

### WALKABLE / TRAFFICABLE

#### MOUNTING INSTRUCTIONS

##### PREREQUISITES

- ✓ Installation only on WU concrete walls (waterproof concrete).
- ✓ The outer basement wall must be dry to matt damp, free of grease and dust and free of loose components and cement residue on the contacting surface with the light well flange or AQUA adhesive.
- ✓ The MEA AQUA ADHESIVE may only be processed if the temperature during processing and setting is at least +5°C.



##### GENERAL NOTES

- ✓ Please refer to the MEA AQUA Adhesive Safety Data Sheet (see [www.mea-group.de](http://www.mea-group.de)) before starting the installation.
- ✓ Light wells must be checked for transport damage before installation.
- ✓ When using a drainage connection for MEA light wells must be installed before mounting the light well.

##### SCOPE OF DELIVERY MEA AQUA FIXING SETS

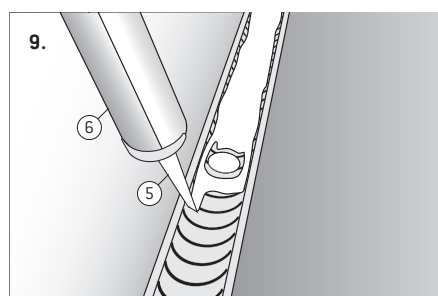
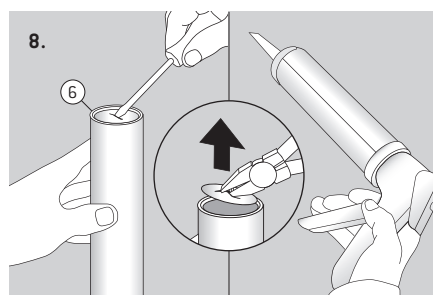
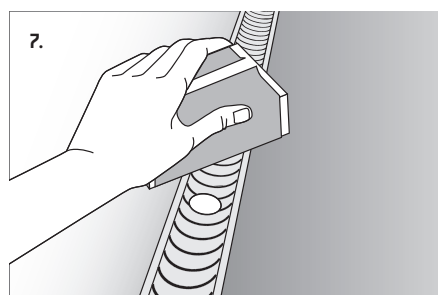
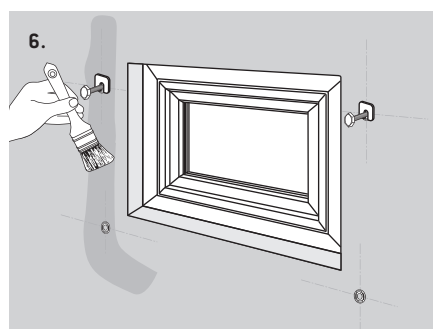
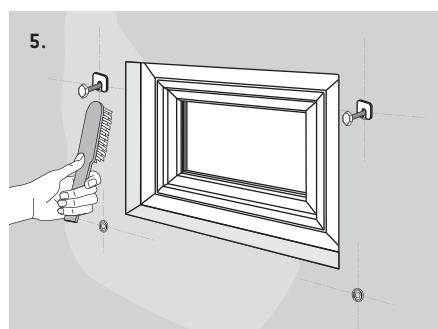
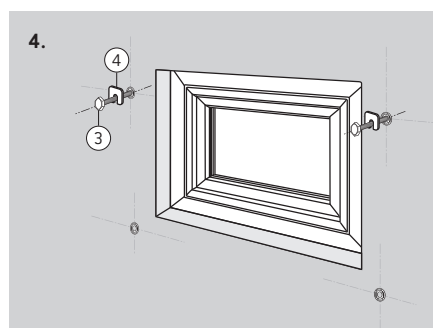
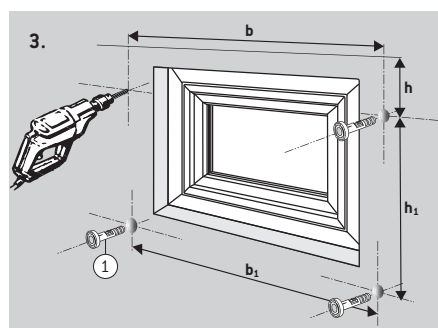
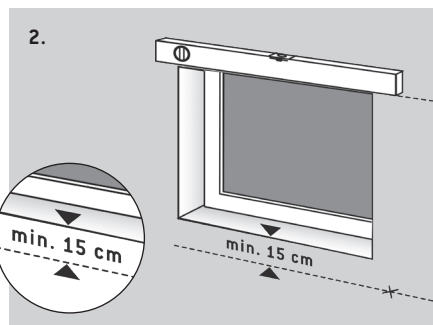
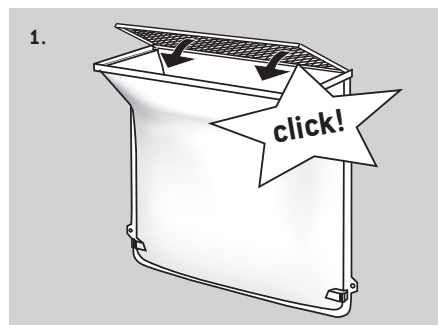
The MEA AQUA fixing sets are matched to the light well size and differ in the number of MEA AQUA adhesive cartridges:

- ✓ **2 cartridges** (Item No. 010865950)
- ✓ **3 cartridges** (Item No. 010865930)

##### DRILLING DIMENSIONS MEA MULTINORM 3-IN-1 AND REQUIRED NUMBER OF ADHESIVE CARTRIDGES

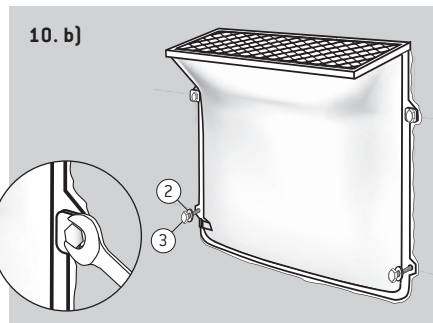
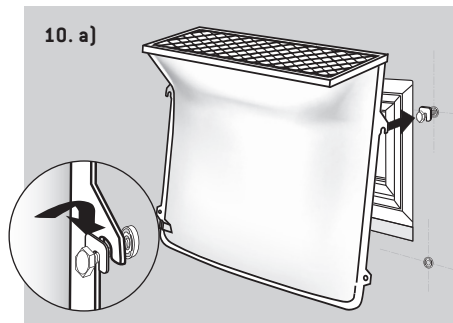
Dimensions MEAMULTINORM 3-in-1 in cm			Drilling dimensions in cm				Number of cartridges
Width	Height	Depth	h	h1	b	b1	
80	60	40	10,4	38,8	92,0	92,0	2
80	100	40	15,4	63,8	92,0	92,0	2
100	60	40	10,4	38,8	110,0	110,0	2
100	100	40	20,0	65,0	110,2	108,8	2
100	130	40	20,0	95,0	110,2	108,8	3
125	100	40	15,7	65,0	140,0	134,0	3
100	100	60	15,5	63,8	110,0	110,0	2
125	100	60	15,7	63,8	140,0	140,0	3
125	130	60	20,0	95,0	140,0	134,0	3
150	120	60	15,7	78,8	165,0	165,0	3

## MOUNTING INSTRUCTIONS MEA MULTINORM 3-IN-1 WALKABLE/TRAFFICABLE



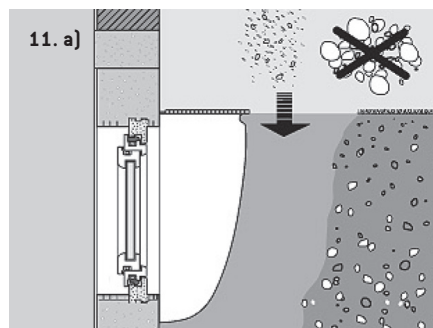
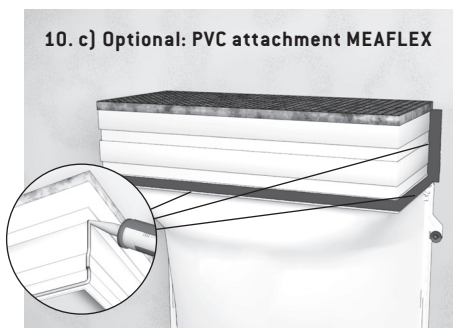
1. Insert grating before mounting.
2. Mark the top edge of the terrain.  
 > **Note:** Min. 15 cm distance between lower edge of window and light well floor.
3. Mark and drill holes (4 x Ø 12 mm, 90 mm deep). Blow out the drilled holes and place F12 dowels.
4. Screw in the upper two fastening screws 8 x 70.
5. The outer basement wall must be dry to matt damp, free of grease and dust and free of loose components, cement residue and blowholes on the contact surface with the light well flange or MEA AQUA adhesive.
6. For cleaning the mounting surfaces we recommend a commercially available alcoholic cleaner.
7. Roughen the light well flange with hand sanding paper and then clean thoroughly.  
 > **Note:** It is preferable to use a commercially available alcohol-based cleaner. This results in a clean, grease and dust-free light well surface that ensures an optimal adhesive effect.
8. Remove the protective cover on the underside of the MEA AQUA adhesive and put the cartridge into the dispensing gun.
9. Apply MEA AQUA adhesive evenly over the entire surface of the light well flange and distribute it in a circle around light well holes, at least 20 mm wide and 8 mm high.  
 > **Note:** For every light well MEAMULTINORM use 3 complete cartridges of MEA AQUA adhesive. For MEAMULTINORM 100x100x40 only 2 cartridges necessary.

## MOUNTING INSTRUCTIONS MEA MULTINORM 3-IN-1 CAN BE WALKABLE/TRAFFICABLE



**10. a) + b)** Attach MEAMULTINORM to the two upper fixing hooks, holding the light well diagonally away from the concrete wall so that the sealant is not interrupted, then press it evenly against the concrete wall. Tighten MEAMULTINORM evenly at all fixing points so that the adhesive swells out of the joint all the way round.

> **Note:** Joint thickness min. 3 mm



**10. c) Optional:** Apply the MEA adhesive and sealant generously all around the grating joint. Place the MEAFLEX PVC attachment with inserted grating on the light shaft and press firmly into place. Seal the transition between light well and PVC attachment MEAFLEX 2-ply with liquid plastic and fabric completely.

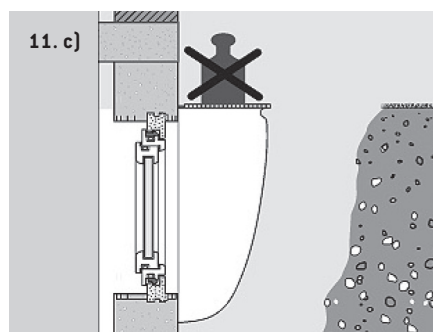
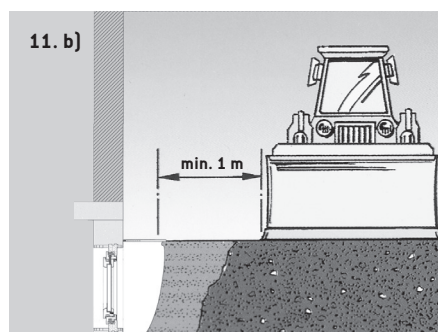
> **Note:** Further information on the installation can be found via the adjacent QR code.



**11. The backfilling is possible after one day!** Only use homogeneous material (e.g. gravel-sand mixture) as backfilling material and compact it in layers (first on the side walls, then on the longitudinal side). For heavy compaction equipment, keep a safe distance from the light well. The light well can only be walked on after it has been compacted.

**When filling, please comply with the DIN 18300 regulations.**

**12.** Place a load-bearing concrete bordering around the light well.



## MOUNTING INSTRUCTIONS MEA MULTINORM 3-IN-1 TRAFFICABLE

