

**MEAGARD II**

A 15, B 125 Nominal width 100



BUILDING SUCCESS

**Material properties**

POLYMER CONCRETE	on a Polyester resin basis, with mineral fillers, additives
COMPRESSIVE STRENGTH	≥ 90 N/mm <sup>2</sup>
BENDING STRENGTH	≥ 22 N/mm <sup>2</sup>
ELASTICITY MODULE	25,000 – 35,000 N/mm <sup>2</sup>
DENSITY	2,1 – 2,3 kg/dm <sup>3</sup>
COEFFICIENT OF LINEAR EXPANSION	Approx. 1.45 x 10 <sup>-5</sup> 1/K
HEAT RESISTANCE	100°C continuous load, up to 200°C with a load duration up to 5 min.
FROST RESISTANCE	- 50°C
WATER PENETRATION LEVEL	0 mm
WATER ABSORPTION	< 0,05% DIN 52 103 (A)
MATERIAL STRUCTURE	Capillary free

**Purpose of use**

- > Component for the line drainage of surfaces in order to collect, transport and discharge rain water from adjacent fixed surfaces.

**Drainage capacity with free channel cross-section:**

- > 3.63 l/sec. Sufficient for draining an area of approx. 181 m<sup>2</sup>.
- > Determined using an empirical formula in accordance DIN 18035-3 (1978-12)

# MEAGARD II

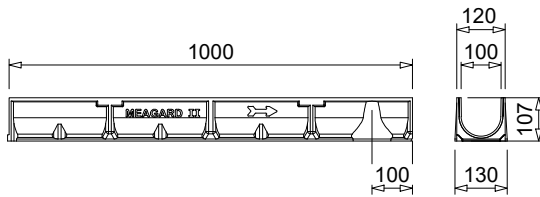
A 15, B 125 Nominal width 100



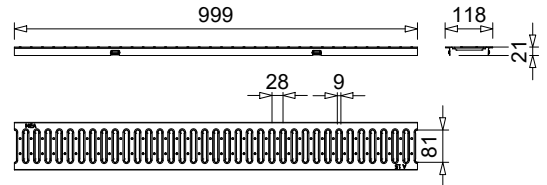
BUILDING SUCCESS

## MEAGARD II S, G, M, E AND H POLYMER CONCRETE DRAINAGE CHANNEL WITH GRATING PASSABLE FOR CARS

Passenger car passable drainage channel without fall made of polymer concrete, optionally with galvanised or stainless steel slotted grating, galvanised mesh grating or ductile iron grating. Clear width 100 mm, total width 130 mm. Loading classes A 15 to B 125 according to EN 1433.



010150133



010150773

### MEAGARD II S complete channel with galvanised slotted grating with snap-in locking mechanism, passable passenger cars 22)

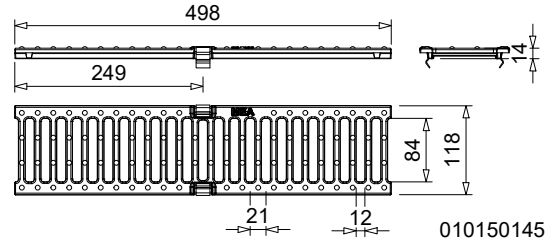
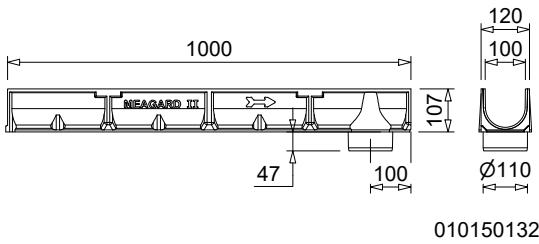
Description	Length (mm)	Height (mm)	EAN-Code	kg/unit
MEAGARD II S complete channel 1 m with galv. slotted grating <sup>1) 22)</sup>	1000	110	010150121	8,44
MEAGARD II S complete channel 0.5 m with galv. slotted grating <sup>22)</sup>	500	110	010150123	4,25
MEAGARD II S/A complete channel with galv. slotted grating with tight formed-in flanged drain outlet $\varnothing$ 110 mm <sup>8) 22)</sup>	1000	110	010150128	8,20

- 1) Connection option for vertical drain  $\varnothing$  110 mm
- 8) With tight formed-in drain outlet  $\varnothing$  110 mm
- 22) Grating/grates loading class A 15 according to EN 1433

# MEAGARD II

A 15, B 125 Nominal width 100

BUILDING SUCCESS



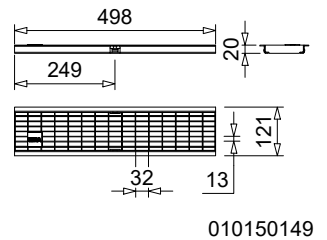
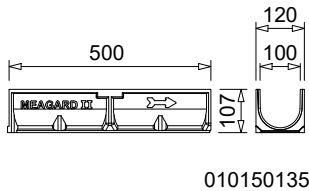
## MEAGARD II G complete channel with ductile iron slotted grating with snap-in locking mechanism, loading classes up to B 125

Description	Length (mm)	Height (mm)	EAN-Code	kg/unit
MEAGARD II G complete channel 1 m with 2 ductile iron grates-B 125 <sup>1)*)****)</sup>	1000	115	010150125	11,69
MEAGARD II G complete channel 0.5 m with ductile iron grating-B 125 <sup>*)****)</sup>	500	115	010150127	5,90
MEAGARD II G/A complete channel with tight formed-in flanged drain outlet Ø 110 mm and ductile iron slotted grating-B 125- <sup>8)*)****)</sup>	1000	115	010150130	11,00

\*) Delivery time upon request

\*\*\*\*) The surface coating of ductile iron parts only has a temporary and cosmetic function. Ductile iron is virtually impervious to surface oxidation from environmental influences (e.g. thawing salt). Superficial rust does not constitute a product defect. Of course, the resignation of surface coating is in accordance with all corresponding standards.

- 1) Connection option for vertical drain Ø 110 mm
- 8) With tight formed-in drain outlet Ø 110 mm



## MEAGARD II M complete channel with galvanised mesh grating 30/10 with snap-in locking mechanism, passable passenger cars 22)

Description	Length (mm)	Height (mm)	EAN-Code	kg/unit
MEAGARD II M complete channel with galv. mesh grating 30/10 <sup>1)22)</sup>	1000	110	010150129	10,30
MEAGARD II M complete channel with galv. mesh grating 30/10 <sup>22)*)</sup>	500	110	010150131	5,15

\*) Delivery time upon request

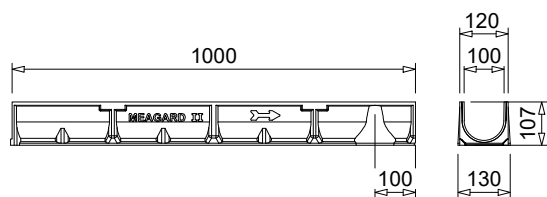
- 1) Connection option for vertical drain Ø 110 mm
- 8) With tight formed-in drain outlet Ø 110 mm
- 22) Grating/grates loading class A 15 according to EN 1433

# MEAGARD II

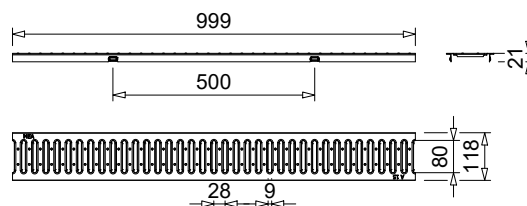
A 15, B 125 Nominal width 100



BUILDING SUCCESS



010150133



010150781

## MEAGARD II E complete channel with stainless steel grating with snap-in locking mechanism, passable passenger cars \*) 22)

Description	Length (mm)	Height (mm)	EAN-Code	kg/unit
MEAGARD II E complete channel 1 m with stainl.steel slotted grating <sup>1)22) *)</sup>	1000	110	010150115	8,20
MEAGARD II E complete channel 0.5 m with stainl.steel slotted grating <sup>22) *)</sup>	500	110	010150117	4,30

\*) Delivery time upon request

1) Connection option for vertical drain  $\varnothing$  110 mm

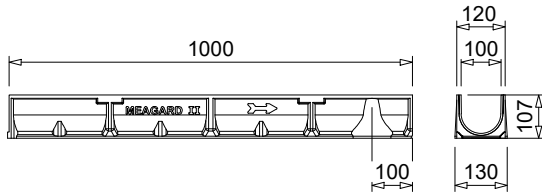
22) Grating/grates loading class A 15 according to EN 1433

# MEAGARD II

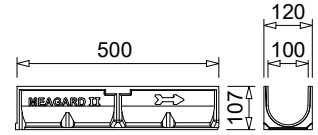
A 15, B 125 Nominal width 100



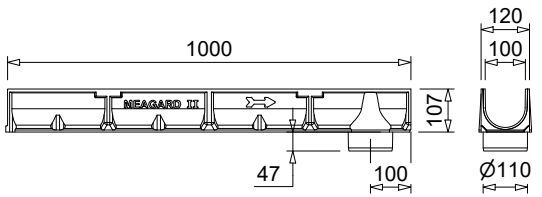
BUILDING SUCCESS



010150133



010150135



010150132

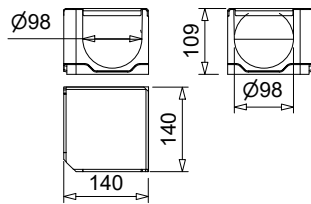
## MEAGARD II Drainage channel body

Description	Length (mm)	Height (mm)	EAN-Code	kg/unit
MEAGARD II/A Drainage channel body, 1 m <sup>4)</sup> *)	1000	108	010150133	7,00
MEAGARD II/A Drainage channel body, 0.5 m <sup>4)</sup> *)	500	108	010150135	3,50
MEAGARD II/A Drainage channel body with $\varnothing$ 110 mm outlet <sup>8)</sup> *)	1000	108	010150132	7,00

\*) Delivery time upon request

4) Connection option for vertical drain  $\varnothing$  110 mm or to end caps with connector or to gullies / silt boxes.

8) With tight formed-in drain outlet  $\varnothing$  110 mm



010150170

## MEAGARD II Corner element with solid cover made of galvanised steel

Description	Length (mm)	Width (mm)	Height (mm)	EAN-Code	kg/unit
MEAGARD II corner element with galv. solid cover <sup>22)</sup> *)	140	130	110	010150170	2,30

\*) Delivery time upon request

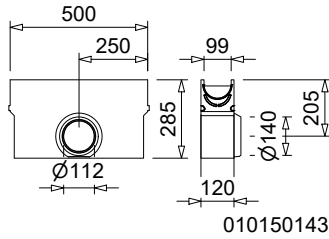
22) Grating/grates loading class A 15 according to EN 1433

# MEAGARD II

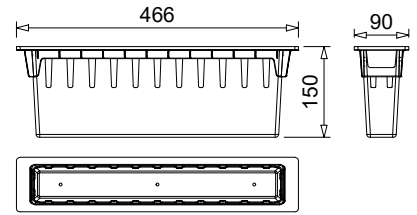
A 15, B 125 Nominal width 100



BUILDING SUCCESS



010150143



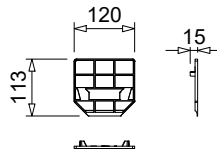
010710061

### MEAGARD II silt box incl. grate and sediment bucket

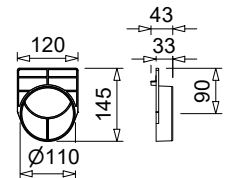
Description	Length (mm)	Width (mm)	Height (mm)	EAN-Code	kg/unit
MEAGARD II S.EK silt box with galv. slotted grating with sediment bucket <sup>22)</sup>	500	130	288	010150137	13,30
MEAGARD II G.EK silt box with ductile iron slotted grating-B 125-with sediment bucket <sup>*)</sup>	500	130	293	010150139	14,00
MEAGARD II M.EK silt box with covering galv. mesh grating 30/10 with sediment bucket <sup>22) *)</sup>	500	130	288	010150141	12,71
MEAGARD II E.EK silt box with covering stainl.steel slotted grating with sediment bucket <sup>22) *)</sup>	500	130	293	010150119	13,30
MEAGARD II EK silt box without grating with sediment bucket <sup>*)</sup>	500	-	-	010150143	12,35
MEA GARD LINE-RIN-FLUID 1000-Plastic sediment bucket <sup>*)</sup>	466	90	150	010710061	0,31

\*) Delivery time upon request

22) Grating/grates loading class A 15 according to EN 1433



010150191



010150193

### MEAGARD II end caps

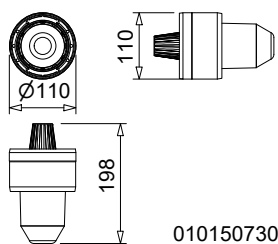
Description	Material	Length (mm)	Width (mm)	Height (mm)	EAN-Code	kg/unit
MEAGARD II/MEALINE.SE End cap for channel start/end	PP	15	120	113	010150191	0,04
MEAGARD II.E End cap for the end of the channel with HD-PE connection piece Ø 110 mm	PP	43	120	145	010150193	0,06

# MEAGARD II

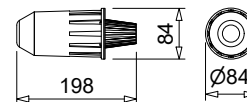
A 15, B 125 Nominal width 100



BUILDING SUCCESS



010150730

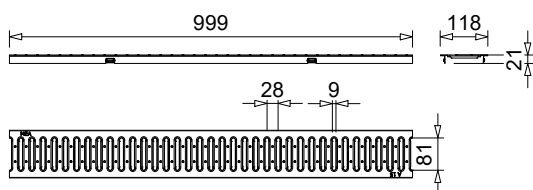


010145060

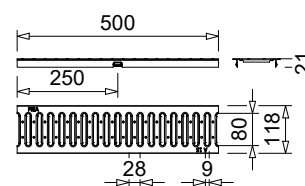
## MEAGARD II Accessories

Description	Material	EAN-Code	kg/unit
MEADRAIN/MEAGARD/MEALINE Drainage set with Ø 110 mm connector, Sediment bucket and odour seal	PP	010150730	0,20
MEAGARD Outlet Ø 110 mm, with moulded support ring for holding the odour trap 010145060 <sup>*)</sup>	PP	010150197	0,80
Odour trap including dirt filter <sup>*)</sup>	PP	010145060	0,09

<sup>\*)</sup> Delivery time upon request



010150773



010150783

## Channel covers for MEAGARD II and MEALINE, loading class A 15 with snap-in channel cover securement

Description	Material	Length (mm)	Inlet sect. area Ø cm <sup>2</sup> /m above	EAN-Code	kg/unit
MEAGARD II-LINE Galv. slotted grating-A 15-1 m SP <sup>*)</sup>	Galv. steel	1000	-	010150773	1,40
MEAGARD II-LINE Galv. slotted grating-A 15-0.5 m SP <sup>*)</sup>	Galv. steel	500	-	010150774	0,70
MEAGARD II-LINE Stainl. steel slotted grating-A 15-1 m SP <sup>*)</sup>	Stainl. steel	1000	-	010150781	1,34
MEAGARD II-LINE Stainl. steel slotted grating-A 15-0.5 m SP <sup>*)</sup>	Stainl. steel	500	-	010150783	0,68

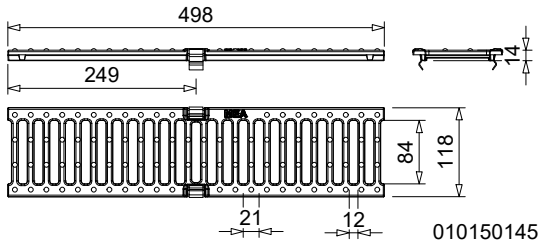
<sup>\*)</sup> Delivery time upon request

# MEAGARD II

A 15, B 125 Nominal width 100



BUILDING SUCCESS

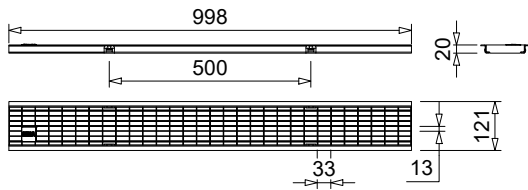


### Channel covers for MEAGARD II, loading class B 125 with snap-in channel cover securement

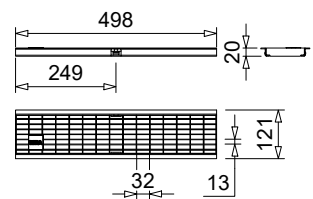
Description	Material	Length (mm)	Inlet sect. area $\varnothing$ cm <sup>2</sup> /m above	EAN-Code	kg/unit
MEAGARD II Ductile iron slotted grating-B 125-0.5 m 12/84 SP *)****)	Ductile iron	500	-	010150145	2,21

\*) Delivery time upon request

\*\*\*\*) The surface coating of ductile iron parts only has a temporary and cosmetic function. Ductile iron is virtually impervious to surface oxidation from environmental influences (e.g. thawing salt). Superficial rust does not constitute a product defect. Of course, the resignation of surface coating is in accordance with all corresponding standards.



010150147



010150149

### Channel covers for MEAGARD II, loading class A 15 without channel cover securement

Description	Material	Length (mm)	Inlet sect. area $\varnothing$ cm <sup>2</sup> /m above	EAN-Code	kg/unit
MEAGARD II Galv. mesh grating 30/10-A 15-1 m *)	Galv. steel	1000	-	010150147	2,63
MEAGARD II Galv. mesh grating 30/10-A 15-0.5 m *)	Galv. steel	500	-	010150149	1,34

\*) Delivery time upon request