

**MATERIAL CHARACTERISTICS**

<b>POLYMER CONCRETE</b>	on a Polyester resin basis, with mineral fillers, additives
<b>COMPRESSIVE STRENGTH</b>	≥ 90 N/mm <sup>2</sup>
<b>BENDING STRENGTH</b>	≥ 22 N/mm <sup>2</sup>
<b>ELASTICITY MODULE</b>	25,000 – 35,000 N/mm <sup>2</sup>
<b>DENSITY</b>	2,1 – 2,3 kg/dm <sup>3</sup>
<b>COEFFICIENT OF LINEAR EXPANSION</b>	Approx. 1.45 x 10 <sup>-5</sup> 1/K
<b>HEAT RESISTANCE</b>	100°C continuous load, up to 200°C with a load duration up to 5 min.
<b>FROST RESISTANCE</b>	- 50 °C
<b>WATER PENETRATION LEVEL</b>	0 mm
<b>WATER ABSORPTION</b>	< 0,05% DIN 52 103 (A)
<b>MATERIAL STRUCTURE</b>	Capillary free

**PURPOSE OF USE**

Component for the line drainage of surfaces in order to collect, transport and discharge rainwater from adjacent fixed surfaces.

**DESIGN**

- / Length 1000 mm
- / CATHEDRAL
- / BACKGAMMON
- / BAVARIA
- / HONEYCOMB

**ACCESSORIES**

- / Inspection channels
- / Gullies
- / Covers for inspection channels and gullies
- / End caps closed or with connection piece Ø 110 mm

\*\* Not suitable for the diagonal or transverse travel of motorways and highways.

# MEADRAIN DM CITY 1000

A 15, B 125, C 250, D 400\*\*

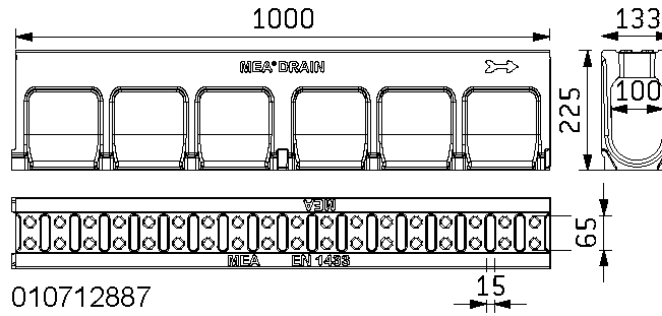
CW 100



BUILDING SUCCESS

## MEADRAIN DM CITY 1000 POLYMER CONCRETE DRAINAGE CHANNEL MONOLITHIC CONSTRUCTION WITH SEALING JOINT ACCORDING TO EN 1433

Clear width of the channel body 100 mm, total width 133 mm. For the realization of water level slopes. Loading classes A 15 to D 400 according to EN 1433. Load capacity according to specification, when installed according to the MEA installation instructions.



## MEADRAIN DM CITY 1000 DRAINAGE CHANNEL BODY, LOADING CLASS D 400 ACCORDING TO EN 1433

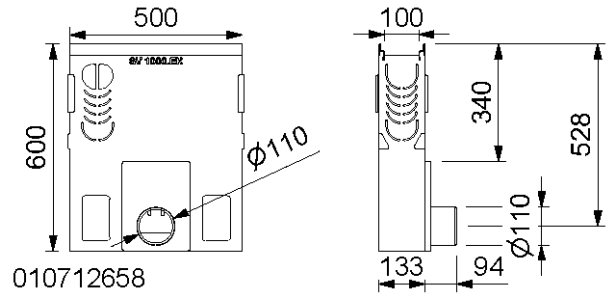
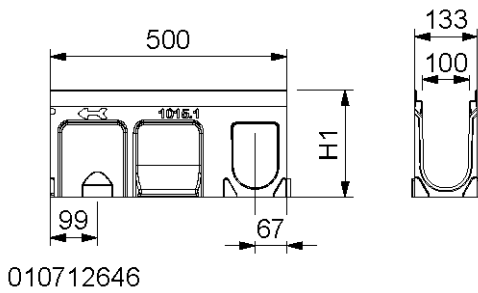
Designation	Ord. No.	Length [mm]	Height [mm]	Inlet sect. area Ø cm <sup>2</sup> /m above	kg/unit
MEADRAIN DM CITY 1000.0 Drainage channel body	010712887	1000	225	160	27,60

\*\* Not suitable for the diagonal or transverse travel of motorways and highways.

## MEADRAIN DM CITY 1000 ACCESSORIES

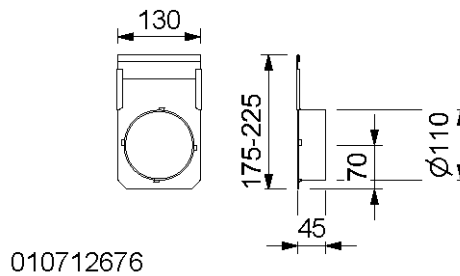
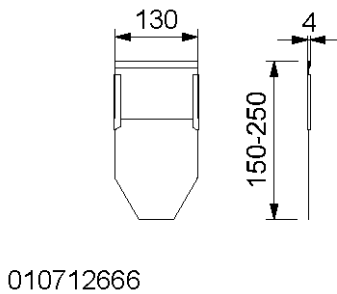
MEADRAIN DM CITY 1000.0 channels are compatible with drainage elements

MEADRAIN SV 1015, SG 1015 and with the accessories of MEADRAIN SV/SG 1015.



## MEADRAIN DM CITY 1000 INSPECTION CHANNELS AND GULLIES

Designation	Ord. No.	Length [mm]	Height [mm]	kg/unit
MEADRAIN SV 1015.1 Drainage channel body <sup>4) 14)</sup>	010712646	500	225	9,50
MEADRAIN SG 1015.1 Drainage channel body <sup>4) 14)</sup>	010713628	500	225	9,50
MEADRAIN SV 1000.EK 110 Gully incl. sediment bucket for pipe connection Ø 110 mm	010712658	500	600	32,84
MEADRAIN SG 1000.EK110 Gully incl. sediment bucket for pipe connection Ø 110 mm	010713666	500	600	33,18



## MEADRAIN DM CITY 1000 END CAPS

Designation	Ord. No.	Material	kg/unit
MEADRAIN SV/SG 1000-20.SE End cap for channel start/end, height-adjustable	010712666	Galv. steel	0,28
MEADRAIN SV/SG 1005-15.E End cap for channel end, height adjustable with connection piece Ø 110 mm	010712676	Galv. steel	0,45

4) Connection option for vertical drain Ø 110 mm or to end cap with connection piece or to a gully/silt box.

14) Connection option for corner-, t- and cross- connections

\*\* Not suitable for the diagonal or transverse travel of motorways and highways.

# MEADRAIN DM CITY 1000

A 15, B 125, C 250, D 400\*\*

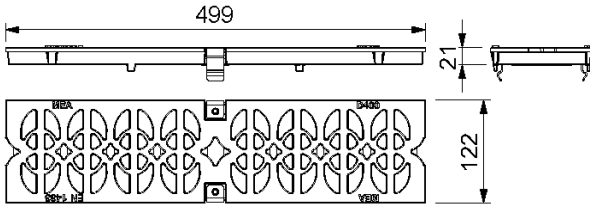
CW 100



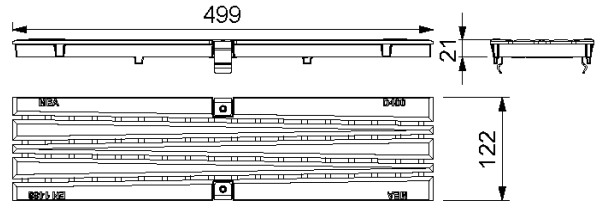
BUILDING SUCCESS

## COVERS FOR MEADRAIN DM CITY 1000 GULLY AND INSPECTION CHANNEL

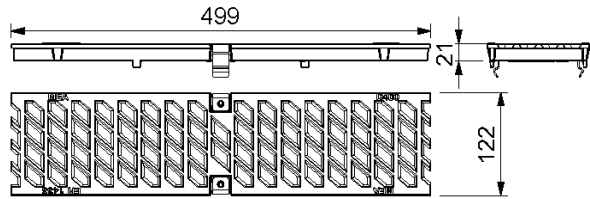
With CLIPFIX channel securement, with longitudinal shift protection, suitable for light gully and inspection channel of MEADRAIN DM CITY 1000.



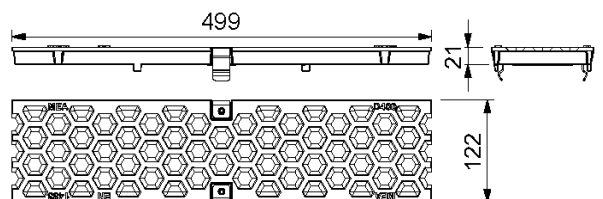
010713122



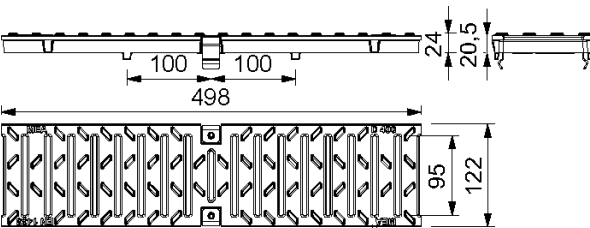
010713126



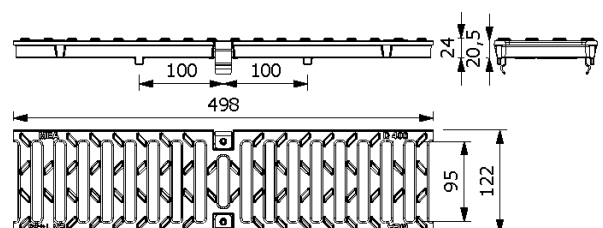
010713124



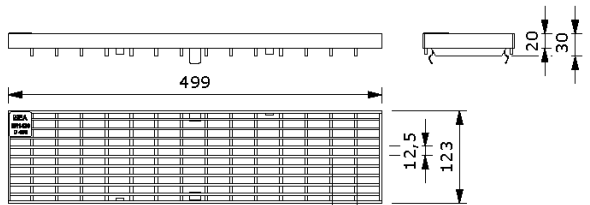
010713120



010152767



010712677



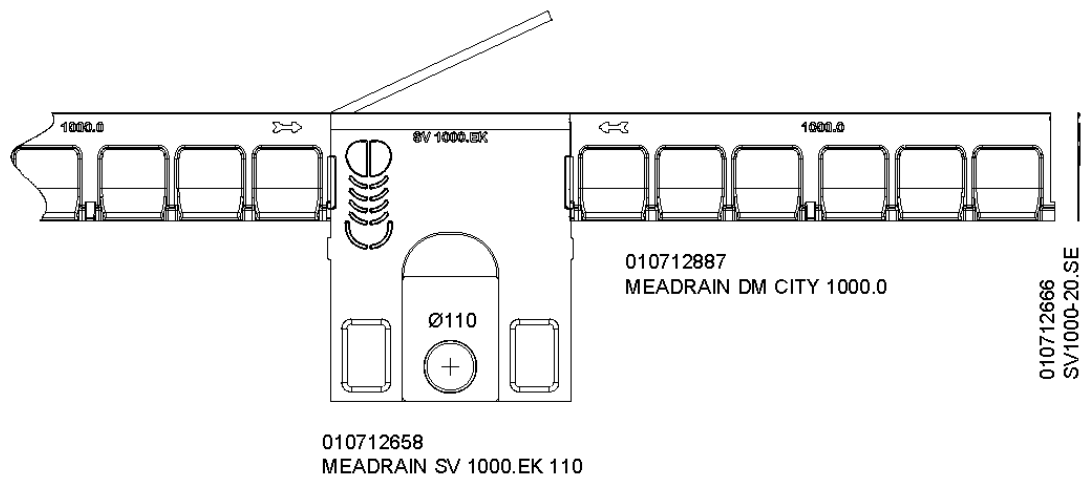
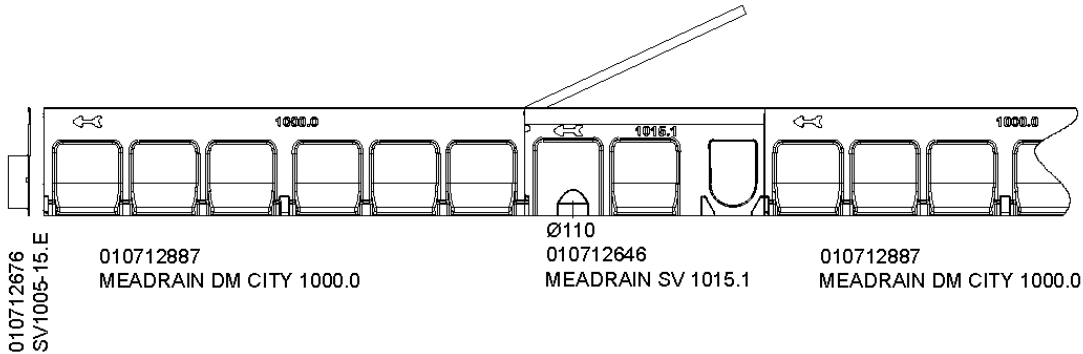
010152337

## LOADING CLASS D 400 ACCORDING TO EN 1433 WITH NON-BOLTED CLIPFIX CHANNEL COVER SECUREMENT

Designation	Ord. No.	Material	Length [mm]	Inlet sect. area Ø cm <sup>2</sup> /m above	kg/unit
MEA 100 Ductile Iron slotted grating-D-0,5 m 5/100 CXL	010152767	Ductile iron	500	186	4,00
MEA 100 Ductile Iron slotted grating-D-0,5 m 11/100 CXL	010712677	Ductile iron	500	410	3,50
MEA 100 Design grating CATHEDRAL-D-0,5 m CXL*	010713122	Ductile iron	500	496	3,50
MEA 100 Design grating BACKGAMMON-D-0,5 m CXL*	010713126	Ductile iron	500	200	3,50
MEA 100 Design grating BAVARIA Rost-D-0,5 m CXL	010713124	Ductile iron	500	292	3,50
MEA 100 Design grating HONEYCOMB-D-0,5 m CXL	010713120	Ductile iron	500	206	3,50
MEA 100 Galv. Mesh grating-D-0,5 m 30/10 CXL	010152337	Ductile iron	500	845	2,90
MEA 100 Galv. Mesh grating-D-0,5 m 30/10 CXL	010152353	Ductile iron	500	845	2,90

\*\* Not suitable for the diagonal or transverse travel of motorways and highways.

## MEADRAIN DM CITY 1000 SYSTEM



The surface coating of ductile iron parts only has a temporary and cosmetic function. Ductile iron is virtually impervious to surface oxidation from environmental influences (e.g. thawing salt). Superficial rust does not constitute a product defect. Of course, the resignation of surface coating is in accordance with all corresponding standards.

This edition of the technical data sheet shall be valid from October 2021 until a revised version is published and replaces any previous publications. The respectively current version is available for download at [www.mea-group.com](http://www.mea-group.com).

MEA Bautechnik GmbH  
Business Unit MEA Water Management  
Sudetenstraße 1  
86551 Aichach  
Tel.: +49 (0) 82 51. 91 0  
Fax: +49 (0) 82 51. 91 13 06  
E-Mail: [info@mea-group.com](mailto:info@mea-group.com)  
[www.mea-group.com](http://www.mea-group.com)