

MATERIAL CHARACTERISTICS

POLYMER CONCRETE	on a Polyester resin basis, with mineral fillers, additives
COMPRESSIVE STRENGTH	≥ 90 N/mm ²
BENDING STRENGTH	≥ 22 N/mm ²
ELASTICITY MODULE	25.000 – 35.000 N/mm ²
DENSITY	2,1 – 2,3 kg/dm ³
COEFFICIENT OF LINEAR EXPANSION	Approx. 1,45 x 10 ⁻⁵ 1/K
HEAT RESISTANCE	100°C continuous load, up to 200°C with a load duration up to 5 min.
FROST RESISTANCE	- 50°C
WATER PENETRATION DEPTH	0 mm
WATER ABSORPTION	< 0,05% DIN 52 103 (A)
MATERIAL STRUCTURE	Capillary-free

PURPOSE OF USE

Component for the line drainage of surfaces in order to collect, transport and discharge rainwater from adjacent fixed surfaces.

Drainage capacity with free channel cross-section: 3.63 l/sec. Sufficient for drainage of approx. 181 m² area. (Determined via empirical formula according to DIN 18035-3 (1978-12)).

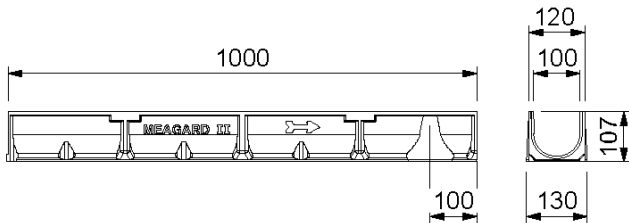
MEAGARD II

nominal width 100

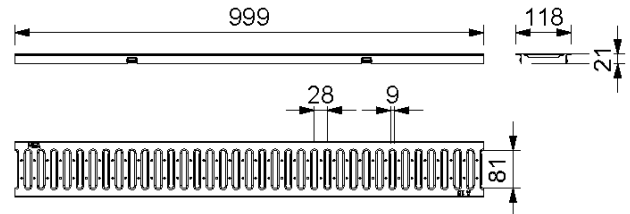
MEAGARD II S, G, M AND E POLYMER CONCRETE DRAINAGE CHANNEL WITH GRATING PASSABLE FOR CARS

Passenger car passable drainage channel without fall made of polymer concrete, optionally with galvanised or stainless steel slotted grating, galvanised mesh grating or ductile iron grating.

Clear width 100 mm, total width 130 mm.



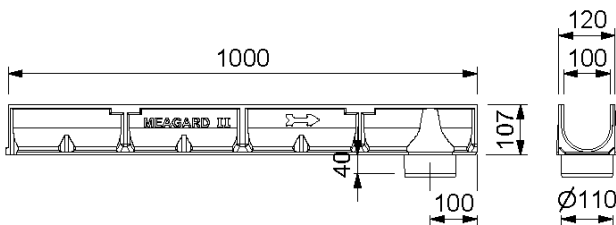
010150133



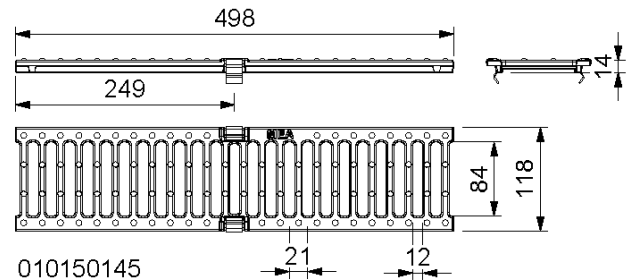
010150773

MEAGARD II S COMPLETE CHANNEL WITH GALVANIZED SLOTTED GRATING WITH SNAP-IN LOCKING MECHANISM, PASSABLE PASSENGER CARS

Description	Ord. No.	Height [mm]	Length [mm]	kg/unit
MEAGARD II S complete channel 1 m with galv. slotted grating 1) 22)	010150121	110	1000	8,44
MEAGARD II S complete channel 0,5 m with galv. slotted grating 22)	010150123	110	500	4,25
MEAGARD II S/A complete channel with galv. slotted grating with tight formed-in flanged drain outlet Ø 110 mm 8) 22)	010150128	110	1000	8,20



010150132



010150145

MEAGARD II G COMPLETE CHANNEL WITH DUCTILE IRON SLOTTED GRATING WITH SNAP-IN LOCKING MECHANISM, LOADING CLASS B 125 ACCORDING TO DIN EN 1433

Description	Ord. No.	Height [mm]	Length [mm]	kg/unit
MEAGARD II G complete channel 1 m with 2 ductile iron gratings-B 125 1) ****)	010150125	115	1000	11,69
MEAGARD II G complete channel 0,5 m with ductile iron grating-B 125 1) ****)	010150127	115	500	6,00
MEAGARD II G/A complete channel with 2 ductile iron slotted grating-B 125 Drainage channel with tight formed-in flanged drain outlet Ø 110 mm 8) ****)	010150130	115	1000	11,00

1) Connection option for vertical drain Ø 110 mm

8) With tight formed-in drain outlet Ø 110 mm

22) Grating/grates loading class A 15 according to DIN EN 1433

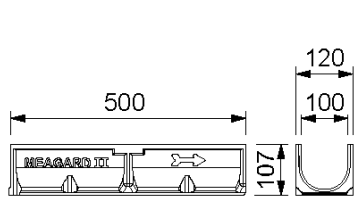
****)The surface coating of ductile iron parts only has a temporary and cosmetic function. Ductile iron is virtually impervious to surface oxidation from environmental influences (e.g. thawing salt). Superficial rust does not constitute a product defect. Of course, the resignation of surface coating is in accordance with all corresponding standards

MEAGARD II

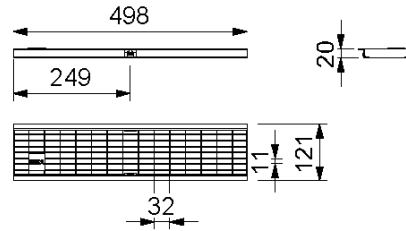
nominal width 100



BUILDING SUCCESS



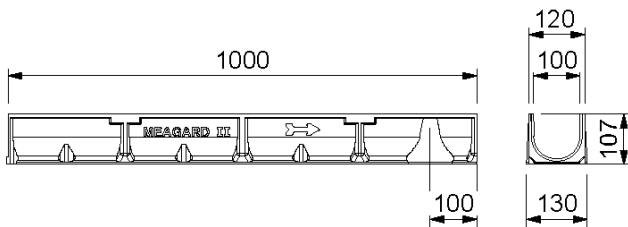
010150135



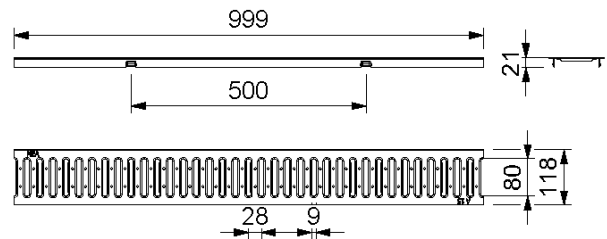
010150149

MEAGARD II M COMPLETE CHANNEL WITH GALVANIZED MESH GRATING 30/10, WITH SNAP-IN LOCKING MECHANISM, PASSABLE PASSENGER CARS

Description	Ord. No.	Height [mm]	Length [mm]	kg/unit
MEAGARD II M complete channel 1 m with galv. mesh grating 30/10 1) 22)	010150129	110	1000	10,30
MEAGARD II M complete channel 0,5 m with galv. mesh grating 30/10 22) *)	010150131	110	500	5,15



010150133



010150781

MEAGARD II E COMPLETE CHANNEL WITH STAINLESS STEEL GRATING, WITH SNAP-IN LOCKING MECHANISM, PASSABLE PASSENGER CARS

Description	Ord. No.	Height [mm]	Length [mm]	kg/unit
MEAGARD II E complete channel 1 m with stainl. steel slotted grating 1) 22)	010150115	110	1000	8,20
MEAGARD II E complete channel 0,5 m with stainl. steel slotted grating 22) *)	010150117	110	500	4,30

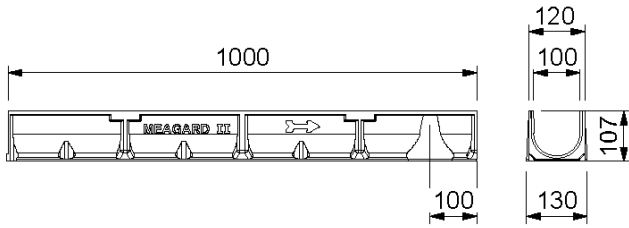
1) Connection option for vertical drain Ø 110 mm
 22) Grating/grates loading class A 15 according to DIN EN 1433
 *) Delivery time on demand.

MEAGARD II

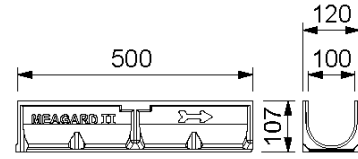
nominal width 100



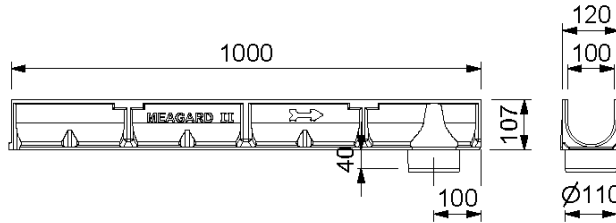
BUILDING SUCCESS



010150133



010150135

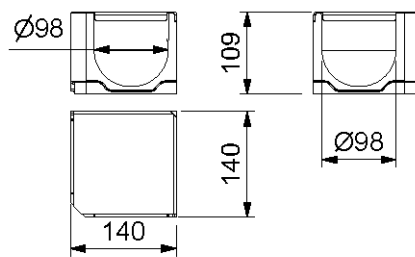


010150132

MEAGARD II DRAINAGE CHANNEL BODY

Description	Ord. No.	Height [mm]	Length [mm]	kg/unit
MEAGARD II/A drainage channel body only, 1 m 4) *)	010150133	108	1000	7,00
MEAGARD II/A drainage channel body only, 0,5 m 4) *)	010150135	108	500	3,50
MEAGARD II/A drainage channel body with Ø 110 mm outlet 8) *)	010150132	108	1000	7,00

MEAGARD II S, G, M AND E ACCESSORIES



010150170

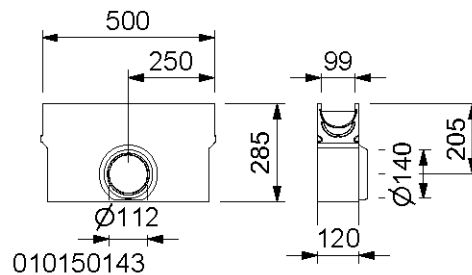
MEAGARD II CORNER ELEMENT WITH CLOSED COVER MADE OF GALVANIZED STEEL

Description	Ord. No.	Height [mm]	Length [mm]	kg/unit
MEAGARD II corner element with galv. Cover *)	010150170	110	140	2,30

4) Connection option for vertical drain Ø 110 mm or to end caps with connector or to gullies / silt boxes.

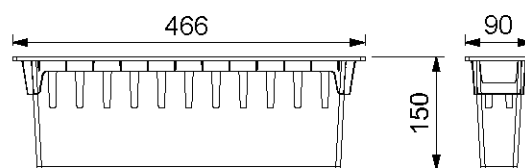
8) With tight formed-in drain outlet Ø 110 mm

*) Delivery time on demand.



MEAGARD II GULLY, INCL. GRATE AND SEDIMENT BUCKET

Description	Ord. No.	Height [mm]	Length [mm]	kg/unit
MEAGARD II S.EK gully with galv. slotted grating with sediment bucket 22)	010150137	288	500	13,30
MEAGARD II G.EK gully with ductile iron slotted grating-B 125 with sediment bucket	010150139	293	500	14,00
MEAGARD II M.EK gully with galv. mesh grating 30/10 with sediment bucket 22) *)	010150141	288	500	14,00
MEAGARD II E.EK gully with stainl. steel slotted grating with sediment bucket 22) *)	010150119	293	500	13,30
MEAGARD II EK gully without grating with sediment bucket *)	010150143	-	500	12,35



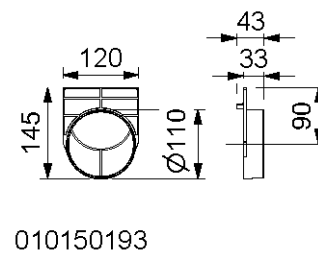
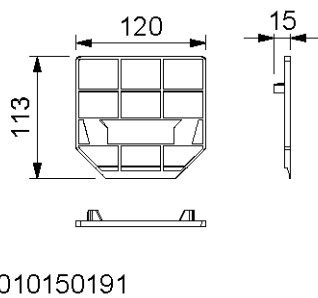
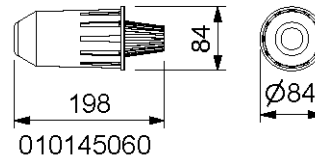
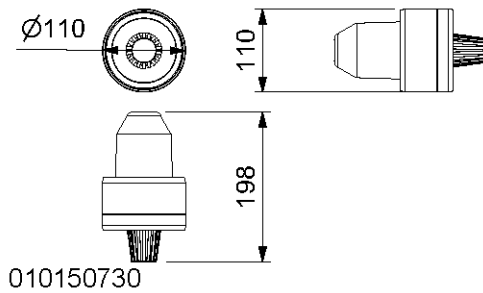
010710061

MEAGARD II SEDIMENT BUCKET FOR MEAGARD INLET BOX

Description	Ord. No.	Material	kg/unit
MEA GARD LINE-RINFLUID100-Plastic sediment bucket *)	010710061	Polyethylene	0,31

22) Grating/grates loading class A 15 according to DIN EN 1433

*) Delivery time on demand.

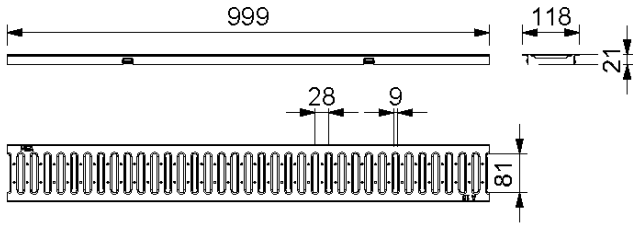


MEAGARD II ACCESSORIES PACKAGES AND END CAPS

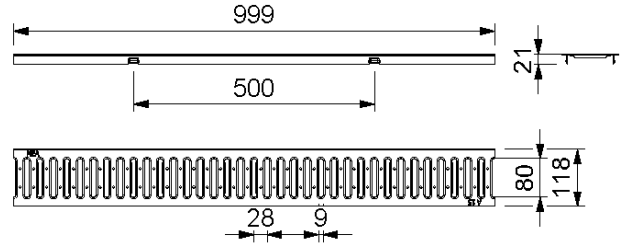
Description	Ord. No.	Material	kg/unit
MEADRAIN/MEAGARD/MEALINE drainage set with Ø 110 mm connector, sediment bucket and odour seal	010150730	PP	0,20
MEAGARD Outlet Ø 110 mm, with moulded support ring for holding the odour trap 010145060 *)	010150197	PP	0,80
Odour trap including dirt filter *)	010145060	PP	0,09
MEAGARD II//MEALINE.SE End cap for beginning and end of channel	010150191	PP	0,04
MEAGARD II.E End cap for the end of the channel with HD-PE connection piece Ø 110 mm	010150193	PP	0,06

*) Delivery time on demand.

MEAGARD II LINE CHANNEL COVERS



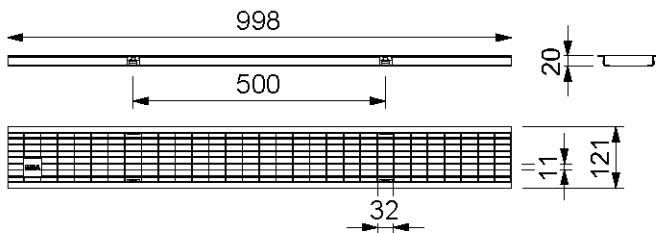
010150773



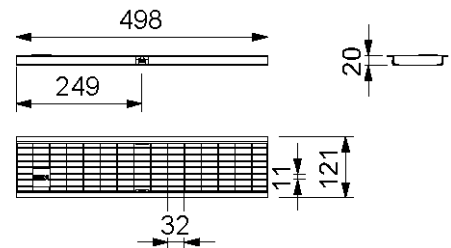
010150781

LOADING CLASS A 15 ACCORDING TO EN 1433, WITH SNAP-IN CHANNEL COVER SECUREMENT

Description	Ord. No.	Length [mm]	Material	kg/unit
MEAGARD II-LINE galv. slotted grating-A 15-1 m SP *)	010150773	1000	Galv. steel	1,40
MEAGARD II-LINE galv. slotted grating-A 15-0,5 m SP *)	010150774	500	Galv. steel	0,70
MEAGARD II-LINE stainl. steel slotted grating-A 15-1 m SP *)	010150781	1000	Stainl. steel	1,34
MEAGARD II-LINE stainl. steel slotted grating-A 15-0,5 m SP *)	010150783	500	Stainl. steel	0,68



010150147



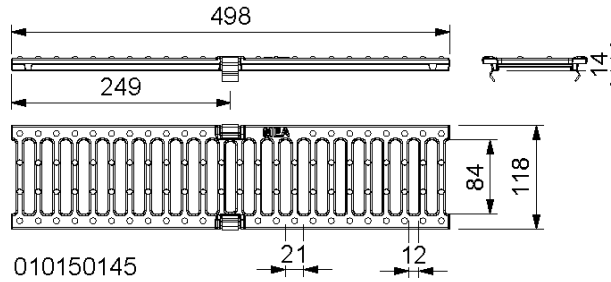
010150149

LOADING CLASS A 15 ACCORDING TO EN 1433 WITHOUT CHANNEL COVER SECUREMENT

Description	Ord. No.	Length [mm]	Material	kg/unit
MEAGARD II galv. mesh grating 30/10-A 15-1 m 22) *)	010150147	1000	Galv. steel	2,63
MEAGARD II galv. mesh grating 30/10-A 15-0,5 m *)	010150149	500	Galv. steel	1,34

22) Grating/grates loading class A 15 according to DIN EN 1433

*) Delivery time on demand.



LOADING CLASS B 125 ACCORDING TO EN 1433, WITH SNAP-IN CHANNEL COVER SECUREMENT

Description	Ord. No.	Length [mm]	Material	kg/unit
MEAGARD II ductile iron slotted grating-B 125-0,5 m 12/84 SP *) ****)	010150145	500	Ductile iron	2,17

*) Delivery time on demand.

****) The surface coating of ductile iron parts only has a temporary and cosmetic function. Ductile iron is virtually impervious to surface oxidation from environmental influences (e.g. thawing salt). Superficial rust does not constitute a product defect. Of course, the resignation of surface coating is in accordance with all corresponding standards

MEAGARD II INSTALLATION SITUATION

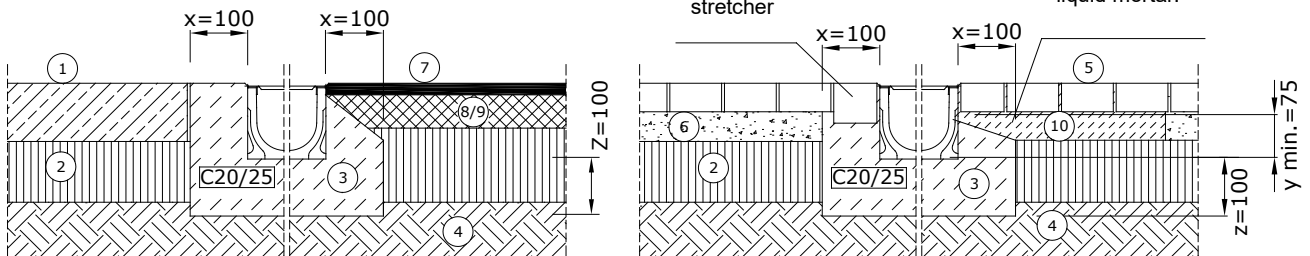
MEAGARD II installation - car passable*

Install covers on channels before installation of channels.

Lay lateral pavements that directly abut the channel to be 3-5 mm higher than the channel upper surface.

The adjacent pavement must be installed in such a way that no horizontal forces act on channel elements.

Lay the first 4 rows of pavement in wet mortar than pour over with liquid mortar.



1. concrete
2. sub-base
3. concrete haunch
4. earth
5. block paving
6. sand layer
7. asphalt
8. base course
9. bituminous base course
10. mortar

* Channel cover loading class A15 to EN 1433.
When using specific gratings and in compliance with MEA installation instructions, loading class B125 to DIN EN 1433.

This edition of the technical data sheet shall be valid from August 2022 until a revised version is published, and replaces any previous publications. The respectively current version is available for download at www.mea-group.com.

MEA Bautechnik GmbH
Business unit MEA Water Management
Sudetenstraße 1
86551 Aichach
Tel.: +49 (0) 82 51. 91 0
Fax: +49 (0) 82 51. 91 13 06
E-Mail: info@mea-group.com
www.mea-group.com