

# MEAGARD II AND TSL80 TOPSLOT



## **DRAINAGE SOLUTION FOR HOME AND GARDEN**

DRAINAGE CHANNEL BODY MADE OF HIGH QUALITY POLYMER CONCRETE  
COMBINED WITH TSL80 TOPSLOT



## MEAGARD II AND TSL80 TOPSLOT

### SIMPLE YET GENIUS COMBINATION

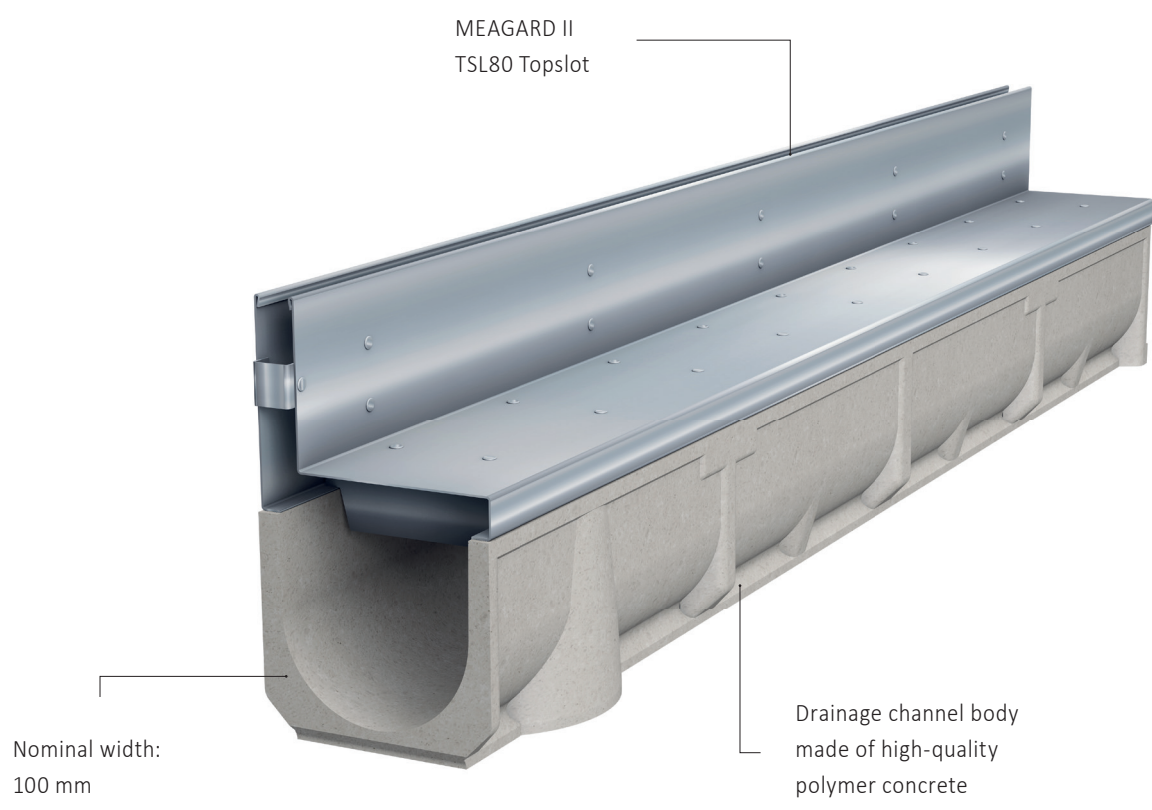
#### MEAGARD II AND MEA TSL80

- > **MEAGARD II:** The special polymer concrete from MEA is remarkable for its outstanding physical and chemical properties
- > Extremely resistant to frost and weatherproof
- > Eco friendly and significant lighter than comparable concrete channels
- > **MEAGARD II TSL80:** TopSlot lateral, made of galvanised steel, suitable up to a neck height of 80 mm

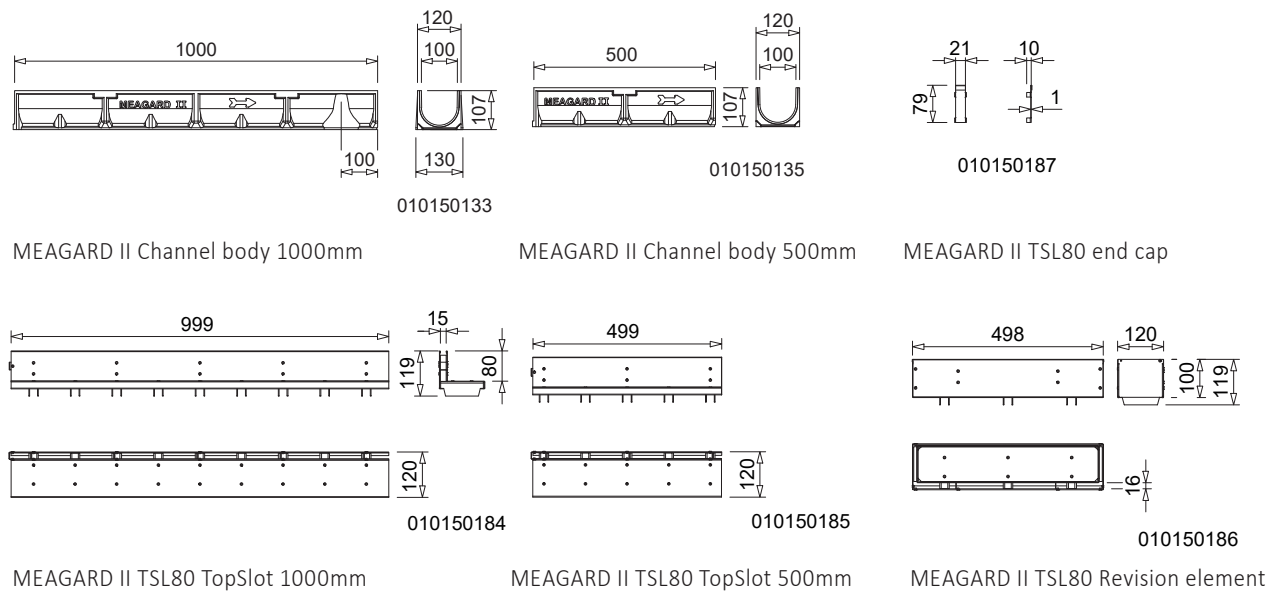
#### FEATURES AND BENEFITS:

- > The extremely narrow drainage slot offers an aesthetically pleasing solution
- > Revision element and endcaps made of galvanised steel
- > The ideal combination for use in the house and garden
- > Load classes up till B 125 according to EN1433

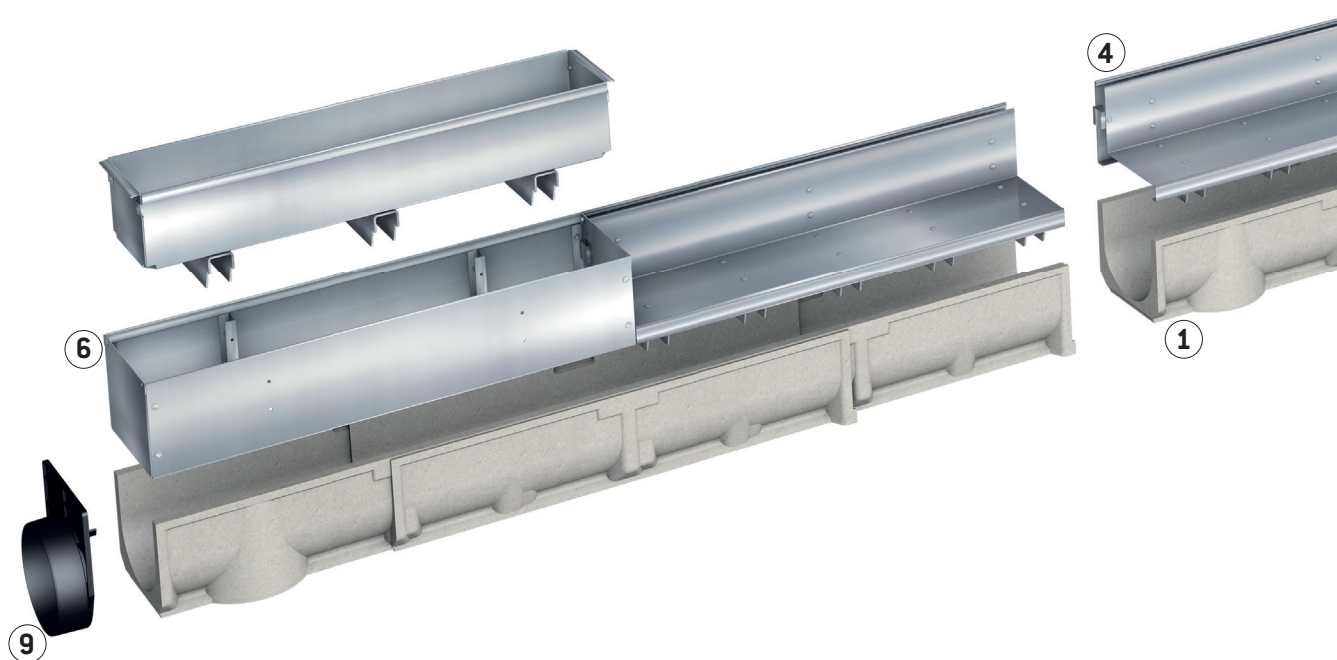


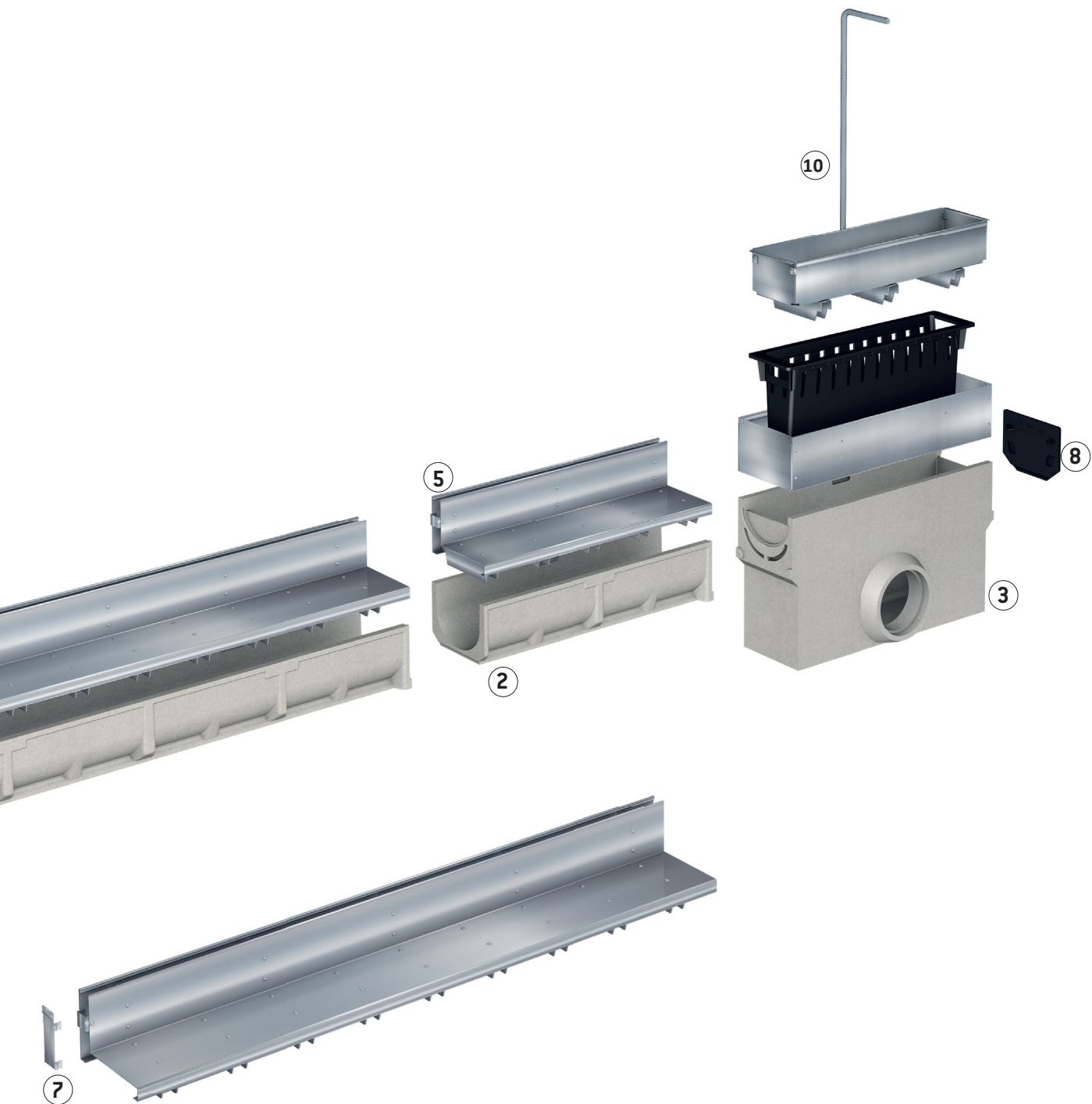


# TECHNICAL DETAILS



## SYSTEM COMPONENTS

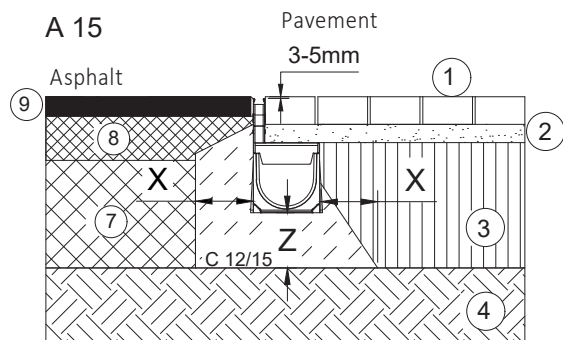




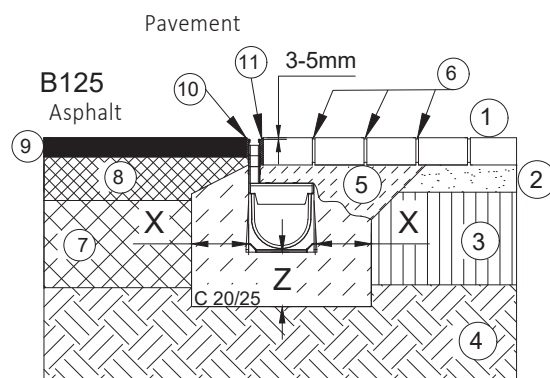
No	Product Code	Description
1	010150133	MEAGARD II channel body, polymer concrete, without cover, length: 1000 mm
2	010150135	MEAGARD II channel body, polymer concrete, without cover, length: 500 mm
3	010150143	MEAGARD II Silt box incl. sediment bucket without cover, length: 500 mm
4	010150184	MEAGARD II TSL80 TopSlot lateral, galvanised steel, length: 1000 mm
5	010150185	MEAGARD II TSL80 TopSlot lateral, galvanised steel, length: 500 mm
6	010150186	MEAGARD II TSL.R/80 Revision element, galvanised steel, length: 500 mm
7	010150187	MEAGARD II TSL80.SE End cap, galvanised steel
8	010150191	MEALINE/MEAGARD II.SE End cap
9	010150193	MEAGARD II TSL80.SE End cap with outlet connector Ø 110 mm
10	010152113	Grid hook

# INSTALLATION INSTRUCTIONS

## MEAGARD II WITH TSL80 TOPSLOT, LATERAL, NECK HEIGHT 80 MM

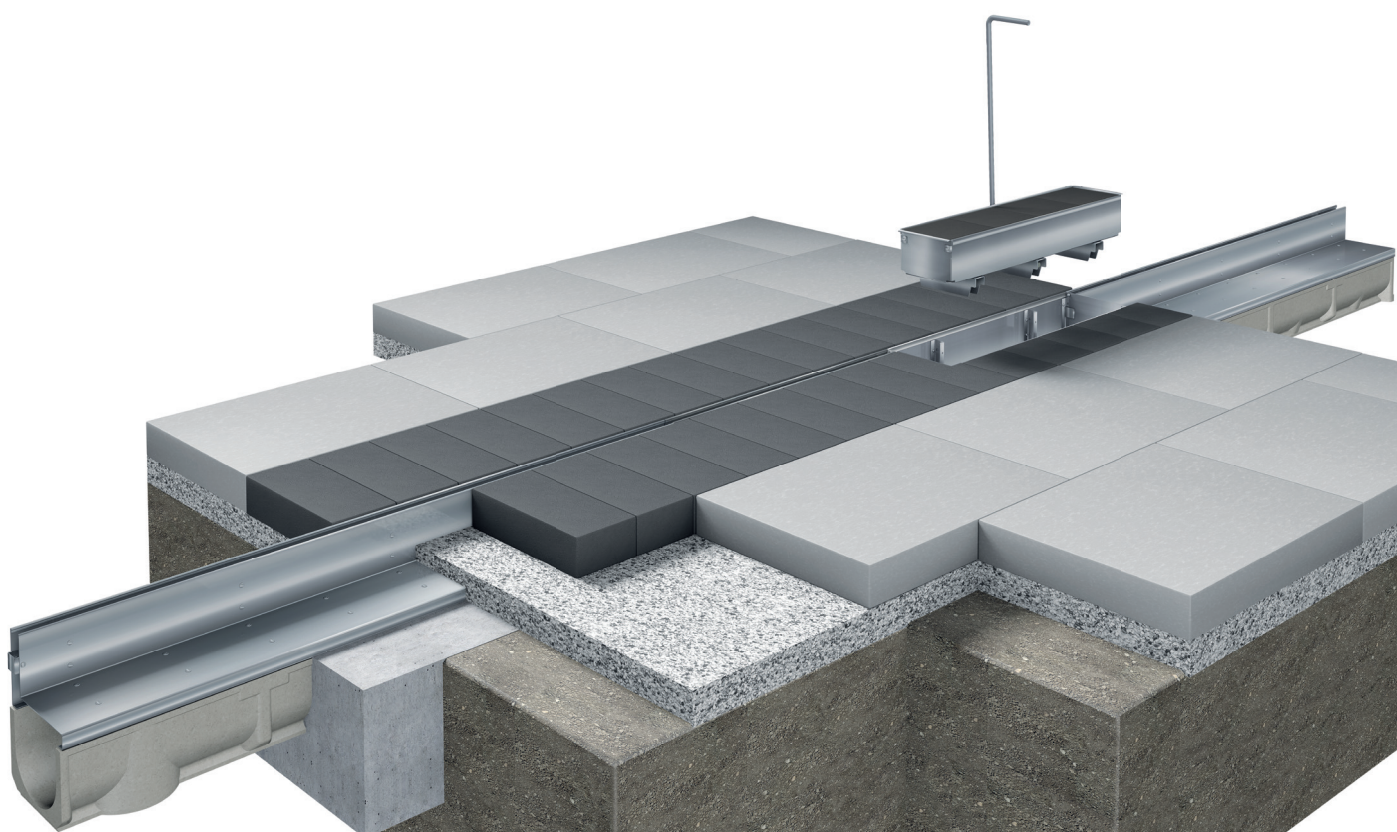


- 1-Pavement
- 2-Grit bed
- 3-Loading bear gravel layer
- 4-Natural soil
- 5-Mortar bed of pavement
- 6-Grouting with rompox Traffic V2 or similar



- 7-Load-bearing bitumen layer
- 8-Bitumen gravel
- 9-Cover layer
- 10-Bituminous sealing
- 11-Joint grouting shrinking-free & resin-bounded

Loading class according to EN 1433	A 15 kN	B 125 kN
Foundation measurement X (mm)	≥ 80	≥ 100
Foundation measurement Z (mm)	≥ 80	≥ 100
Reinforcement bar	no	no
Concrete quality acc. to DIN EN 206-1/DN 1045-2	C12/15	C20/25





**BUILDING SUCCESS**

MEA Bautechnik GmbH ■ Sudetenstraße 1 ■ D-86551 Aichach ■ [www.mea-group.com](http://www.mea-group.com)  
Business unit MEA Water Management