

MEA TSH 100 TOPSLOT

A 15, B 125, C 250, D 400**, E 600**

CW 100



BUILDING SUCCESS

PURPOSE OF USE

Channel covers for MEA drainage channels, as part of a drainage system to catch, transport and evacuate rainwater from adjoining surfaces.

** Not suitable for the diagonal or transverse travel of motorways and highways.

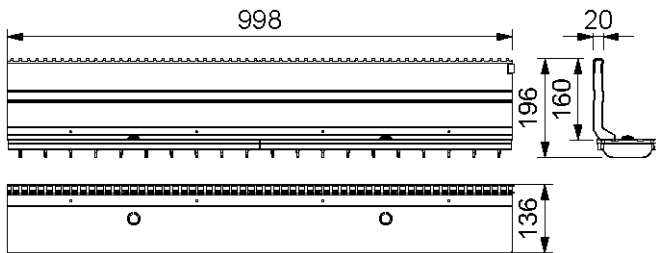
MEA TSH 100 TOPSLOT

A 15, B 125, C 250, D 400**, E 600**

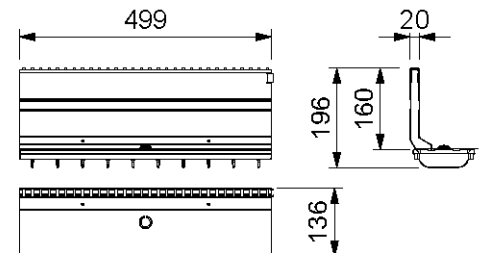
CW 100

MEA TSH 100 TOPSLOT

MEA TSH 100 TOPSLOT suitable for channel systems **MEARIN PLUS/EXPERT 100, MEARIN PLUS F 100, MEADRAIN EN 1000, MEADRAIN SV/SE/SG 1000** and **MEADRAIN SVF/SEF 1000**. Covers all ranges of applications. Loading classes A 15 to E 600** according to EN 1433. Load capacity according to specification, when installed according to the MEA installation instructions.



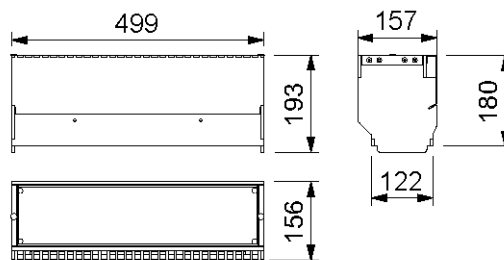
012152875



012152877

MEA TSH 100 TOPSLOT LATERAL, NECK HEIGHT 160 MM, LOADING CLASS E 600 ACCORDING TO EN 1433 **)

Designation	Ord. No.	Material	Length [mm]	Inlet sect. area Ø cm ² /m above	kg/unit
MEA TSH 100.0 / 160 TOPSLOT-E 600-Galv.-1 m-lateral incl. 2 ductile iron grates **)	012152875	Galv. steel	1000	96	10,80
MEA TSH 100.1 / 160 TOPSLOT-E 600-Galv.-0,5 m-lateral incl. ductile iron grate *) **)	012152877	Galv. steel	500	96	5,40
MEA TSH 100.0 / 160 TOPSLOT-E 600-Stainl.steel-1 m-lateral incl. 2 ductile iron grates *) **)	012152879	Stainl. steel	1000	96	10,80
MEA TSH 100.1 / 160 TOPSLOT-E 600-Stainl.steel-0,5 m-lateral incl. ductile iron grate *) **)	012152881	Stainl. steel	500	96	5,40



012152883

MEA TSH 100 INSPECTION ELEMENT UPPER PART, LOADING CLASS E 600 ACCORDING TO EN 1433 **)

Designation	Ord. No.	Material	Length [mm]	kg/unit
MEA TSH 100.R / 160 Inspection element upper part-E 600-Galv.-0,5 m-lateral **)	012152883	Galv. steel	500	13,50
MEA TSH 100.R / 160 Inspection element upper part-E 600-Stainl.steel -0,5 m-lateral *) **)	012152885	Stainl. steel	500	13,50

* Delivery time on demand.

** Not suitable for the diagonal or transverse travel of motorways and highways.

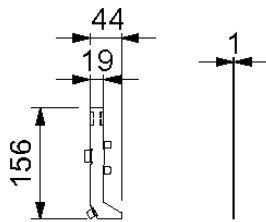
MEA TSH 100 TOPSLOT

A 15, B 125, C 250, D 400**, E 600**

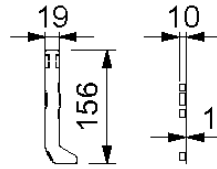
CW 100



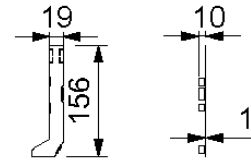
BUILDING SUCCESS



012159030



012159030_ Left



012159030_ Right

MEA TSH 100, END CAPS

Designation	Ord. No.	Material	Height [mm]	kg/unit
MEA TSH End cap made of galvanised steel	012159030	Galv. steel	156	0,03
MEA TSH End cap made of stainless steel *)	012159031	Stainl. steel	156	0,03

MEA TSH TOPSLOT ACCESSORIES

Designation	Ord. No.	Material	kg/unit
MEA TSH Construction cover-S, 1 m for TOPSLOT *)	010159893	Galv. steel	0,29
MEA TSH Construction cover-R, 0,5 m for revision attachment *)	010159895	Galv. steel	0,16
MEA TSH plastic caps for Inspection element upper part-thread for replacement delivery	010152866	PP	0,01
MEA TSH quick connector for grating for replacement delivery	010152900	PP	0,01
MEA TSH assembly tool – 2 items necessary	010152858	Galv. steel	0,19

* Delivery time on demand.

** Not suitable for the diagonal or transverse travel of motorways and highways.

This edition of the technical data sheet shall be valid from March 2022 until a revised version is published and replaces any previous publications. The respectively current version is available for download at www.mea-group.com.

MEA Bautechnik GmbH
 Business unit MEA Water Management
 Sudetenstraße 1
 86551 Aichach
 Tel.: +49 (0) 82 51. 91 0
 Fax: +49 (0) 82 51. 91 13 06
 E-Mail: info@mea-group.com
www.mea-group.com