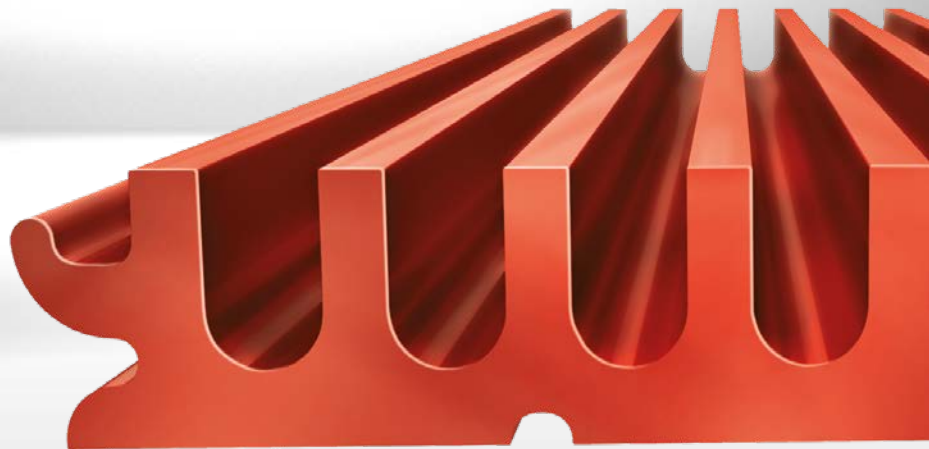


MEARIN PG EVO
DRAINAGE CHANNEL
FOR MULTI-STOREY
CAR PARKS -
THE ORIGINAL REDEFINED



MULTI-STOREY CAR PARK DRAINAGE CHANNEL MEARIN PG EVO

LIGHT, ECONOMICAL, SAFE

FOR AN INSTALLATION ACCORDING TO DIN 18532



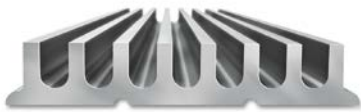


**MULTI-STOREY CAR PARK
DRAINAGE CHANNEL MEARIN PG EVO
FOR INSTALLATION IN FLOORS
COATED WITH ASPHALT
(AS) OR RESIN (OS)**

Benefits at a glance

- ✓ Fully fledged system solution
- ✓ Custom colour options
- ✓ Low noise level
- ✓ Easy to install
- ✓ Glass-fibre-reinforced composite
- ✓ Corrosion-free
- ✓ Easy to clean
- ✓ Total height 30 mm
- ✓ Absolutely tight
- ✓ Barrier-free

MEARIN PG EVO SYSTEM OVERVIEW



MEARIN PG EVO AS

MEARIN PG EVO AS for installation in floors made of asphalt

Total width: 180/153 mm

Height: 30 mm

Length: 3000 mm

- ✓ Monolithic drainage channel made of GRP
- ✓ Loading classes from A 15 to C 250



MEARIN PG EVO OS

MEARIN PG EVO OS for installation in floors with os coating

Total width: 170/153 mm

Height: 30 mm

Length: 3000 mm

- ✓ Monolithic drainage channel made of GRP with sealing flange
- ✓ Loading classes from A 15 to C 250





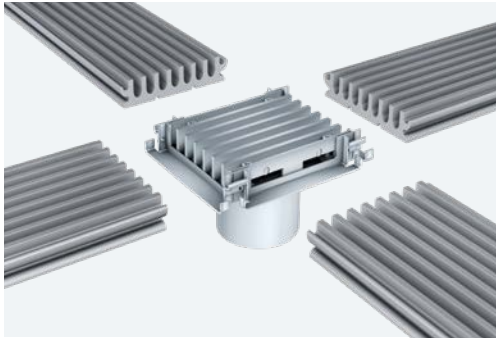
MEARIN PG EVO OS/AS WATERTIGHT DRAINAGE SOLUTION

Thanks to the low construction height, the MEARIN PG EVO allows the construction of narrower platforms in multi-storey car parks allowing major savings in construction material and installation. The MEARIN PG EVO is not only perfect for new projects. It is also perfect for renovation purposes. Thanks to the low height, the system can be installed independently of the previously existing solution. The more the installation of the PG EVO has no impact on the structural reinforcement of the building. Thanks to a length of 3 meters the PG EVO is saving time in installation. The more the reduction of sealable joints is providing an even more safe watertight installation. Last but not least it contributes to a visually more appealing result thanks to the flush design.

Advantages

- ✓ Sealable, resistant to salt and chemicals
- ✓ Flame retardant (European class according to DIN 13501-1: Bfl - s1)
- ✓ Reduction of the number of sealing joints (3 meter channel length)

MEARIN PG EVO ADVANTAGES

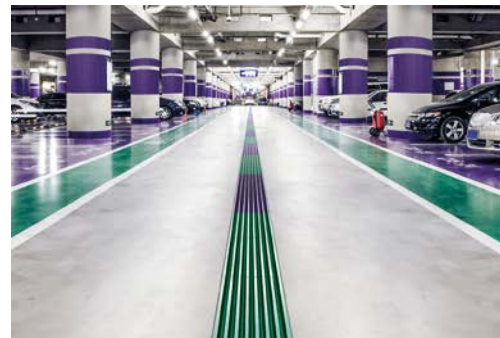


Fully fledged system solution

- ✓ Architecturally demanding solution for draining multi-storey car parks and underground garages
- ✓ Extensive array of accessories: intersection elements, end caps and floor gully made from stainless steel V4A for installation according to DIN 18532

Custom colour options on request

- ✓ Free choice of colours if the total length ordered exceeds 1,000 m
- ✓ Optimal integration in traffic management systems

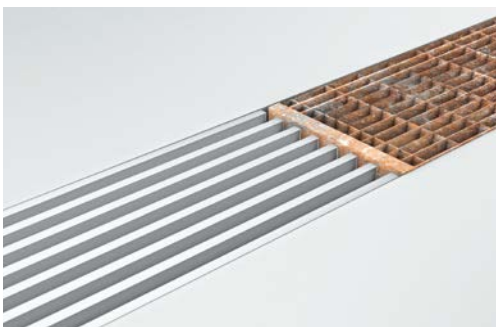


Low noise level

- ✓ Low noise level because there are no moving parts in the entire MEARIN PG EVO system
- ✓ No complaints from residents due to gratings rattling when driven over

Glass-fibre-reinforced composite

- ✓ Sealable, resistant to de-icing salt and chemicals, suitable for all loading classes up to C 250
- ✓ Non-wearing and weatherproof
- ✓ High lateral compressive strength
- ✓ Mirror-smooth surface
- ✓ Similar linear expansion to reinforced concrete
- ✓ Capillary-free material

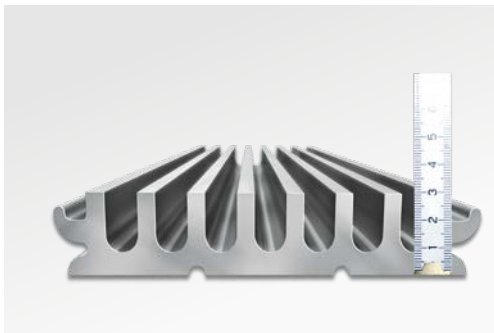


Corrosion-free

- ✓ Resistant to salt, oil and petrol
- ✓ Drainage channel body is completely monolithic and made from glass-fibre-reinforced composite, therefore no rust-prone metal parts
- ✓ Durable aesthetic appeal thanks to the robust, non-rusting material

Easy to clean

- ✓ Visual inspection for soiling suffices because there are no complicated gratings to remove
- ✓ Easy cleaning thanks to the free drainage channel cross section with no gratings or cross bars
- ✓ Freely accessible from above



Total height 30 mm

- ✓ Suitable for floor structures with screed concrete or single/multi-layer mastic asphalt
- ✓ No impact on reinforcement or statics
- ✓ Flatter floor structures possible
- ✓ Easier and quicker installation of the reinforcement
- ✓ Optimal rehabilitation solution
- ✓ Ideal for rehabilitating dish channels

Absolutely tight

- ✓ MEARIN PG EVO AS for mastic asphalt
- ✓ MEARIN PG EVO OS for resin coating
- ✓ Standard-compliant (EN 1433) because the joint can be accessed easily for inspection
- ✓ Optimal sealability because the joint is also freely accessible from above after installation



Easy to install

- ✓ Low total height: no cavities in the floor
- ✓ Also suitable for refurbished buildings because the flat design is independent of the system previously installed
- ✓ Lengths of up to 3 metres mean fewer edges
- ✓ Aesthetically pleasing solution

Barrier-free

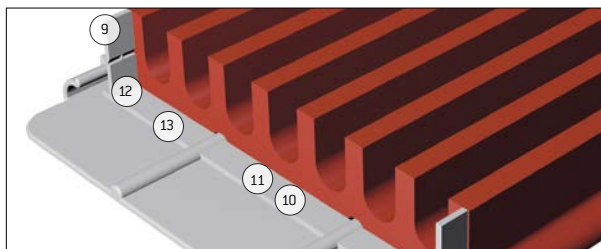
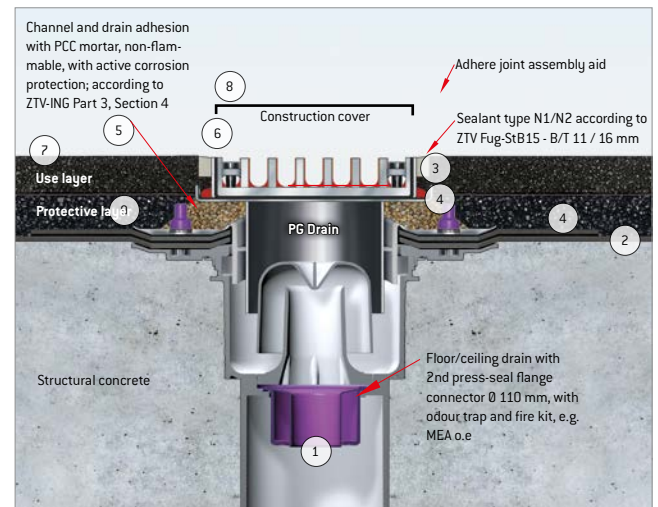
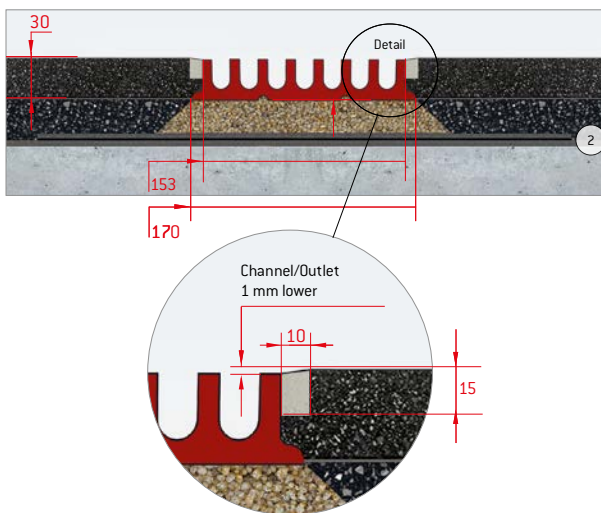
- ✓ Full wheelchair accessibility thanks to the maximum slot width of 13 mm
- ✓ Same height as the surrounding surface



MEARIN PG EVO AS INSTALLATION INSTRUCTION FOR FLOORS MADE OF ASPHALT

INSTALLATION IN FLOORS AND BASE PLATES WITH MEARIN PG EVO 150 MULTI-STOREY CAR PARK DRAINAGE CHANNELS / DRAIN Ø 110 MM AND PRESS SEALING FLANGE

Construction in 2-layer mastic asphalt (2 x 30 mm) and 2nd sealing layer in construction type 1a, in accordance with DIN 18532-1, 8.4.9.4.2, Fig. 19



10. Clean channel butt joints.
11. Apply sealant primer in the channel butt joint and leave to flash off.
12. Grout the channel butt joint flanks with robust, oil-resistant and de-icing salt-resistant sealant.
13. Pour self-levelling, oil-resistant and de-icing salt-resistant sealant into the channel butt joint base.

1. Mount floor/ceiling drain with press-seal flange Ø110 tight and flush with the concrete surface on the pipeline.
2. Apply primer / sealant (epoxy resin basis) to structural concrete, then apply polymer bitumenous welding sheets with elevated support insert (2-layer in channel area) and install into the press-seal flange.
3. Remove side (!) OS sealing flange from the PG EVO stainless steel drains (with Monier pliers).
4. Apply epoxy resin adhesive primer to bitumen surface and underside of the drain/channel.
5. First install PG drain, then PG channel on full surface and without voids, with attached connectors, on PCC (Polymer Concrete Cement flexural strength $\geq 8 \text{ N/mm}^2$) grout bed*.
6. Place construction cover on channel and adhere MEARIN PG EVO joint assembly aid to the side of the sheet metal.
7. Work in 2 x 30 mm AS mastic asphalt screed use layer/protective layer, in accordance with DIN 18532-2, DIN EN13813/e.g. hardness class AS IC 40.
8. Lift off construction cover, expose side channel connection joint, turn construction cover over and apply and pour sealant into side channel connection joint.
9. Remove separation tabs of the joining elements.

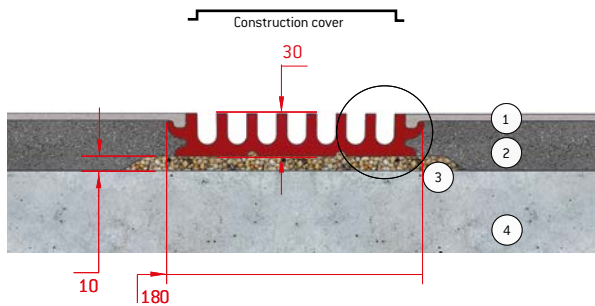
* Epoxy resin mortar (flexural tensile strength $\geq 30 \text{ N/mm}^2$) must be used in areas subject to dynamic loads and traffic. The priming of the drain / channel underside not applicable.

Our installation information provides generally valid suggestions. Special requirements for the channel installation due to local conditions must be specified by the planning party. The manufacturer's instructions for the product selections must be observed. The occupational safety according to ArbSchG must be observed! This edition of the technical data sheet shall be valid from Juli 2020 until a revised version is published, and replaces any previous publications. The respectively valid version is available from the MEA Water Management Application Technology. Phone: +49 (0)82 51 91-0.

MEARIN PG EVO OS INSTALLATION INSTRUCTION FOR FLOORS WITH OS COATING

INSTALLATION BASE PLATES* WITH MEARIN PG EVO MULTI-STOREY CAR PARK DRAINAGE CHANNELS – VERSION 1 OS

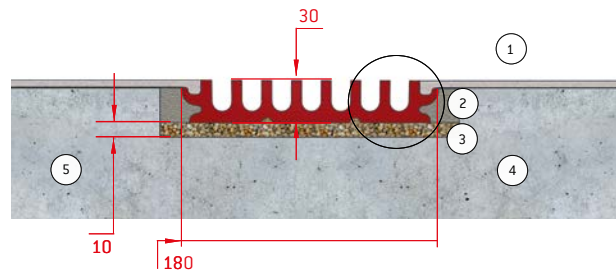
Construction with OS floor coating without 2nd sealing layer in construction type 1b, FLK (OS) in accordance with DIN 18532-1, 8.4.9.4.2, Fig. 21



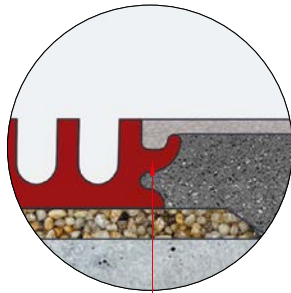
- 1- OS floor coating screed
- 2- Polymer-modified screed
- 3- Channel mortar bed
- 4- Structural concrete

INSTALLATION IN BASE PLATES* WITH MEARIN PG EVO MULTI-STOREY CAR PARK DRAINAGE CHANNELS – VERSION 3 OS

Construction with OS floor coating without 2nd sealing layer in construction type 1b, FLK (OS), in accordance with DIN 18532-1, 8.4.9.4.2, Fig. 21



- 1- OS floor coating screed
- 2- Epoxy composite mortar, non-shrinking
- 3- Channel mortar bed
- 4- Structural concrete
- 5- Width of opening: 220 mm, Depth of opening: 35 mm



Product advantage factory-preformed groove for a better adhesion

*For floor slabs, we recommend an installation with a second sealing level.

Our installation information provides generally valid suggestions. Special requirements for the channel installation due to local conditions must be specified by the planning party. The manufacturer's instructions for the product selections must be observed. The occupational safety according to ArbSchG must be observed! This edition of the technical data sheet shall be valid from Juli 2020 until a revised version is published, and replaces any previous publications. The respectively valid version is available from the MEA Water Management Application Technology. Phone: +49 (0)82 51 91-0.



CAR DEALERSHIPS



MULTI-STOREY CAR PARCS

MEARIN PG EVO APPLICATIONS



INTEGRATION INTO THE GUIDANCE SYSTEM POSSIBLE



UNDERGROUND CAR PARKS



CAR WORKSHOPS

THE ADDITIONAL PRODUCT PORTFOLIO OF MEA WATER MANAGEMENT



MEADRAIN PG
Drainage system for multi-storey
car parks



MEATEC
Professional drainage system for
facades and terraces



MEARIN
Professional lightweight
drainage system made of GRP



MEADRAIN
Professional drainage systems
for challenging projects



BUILDING SUCCESS

MEA Bautechnik GmbH / Sudetenstraße 1 / D-86551 Aichach / www.mea-group.com / www.parkhausrinne.de
Business unit MEA Water Management